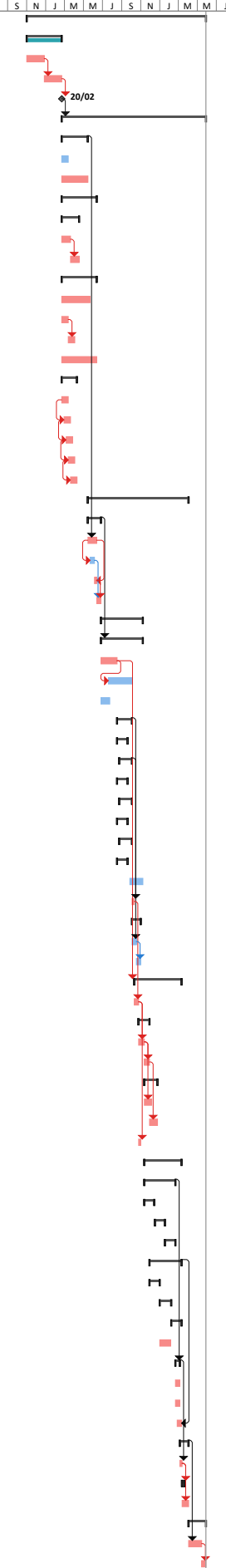


# National Capital Authority—Scrivener Dam Dissipator Strengthening project Submission 1 - Attachment 11

ID	Task Name	Duration	Start	Finish	2021		2022			2023			2024			2025	
					S	N	J	M	J	S	N	J	M	J	S	N	J
1	<b>Scrivener Dam - Dissipator Strengthening Project - Indicative Construction Program</b>	<b>82.2 wks</b>	<b>Wed 1/11/2</b>	<b>Wed 28/05/25</b>													
2	<b>Construction Tender</b>	<b>16 wks</b>	<b>Wed 1/11/2</b>	<b>Tue 20/02/24</b>													
3	Tender Period	40 days	Wed 1/11/2	Tue 26/12/23													
4	Assessment Period	40 days	Wed 27/12/2	Tue 20/02/24													
5	Award	0 wks	Tue 20/02/2	Tue 20/02/24													
6	<b>Project Delivery</b>	<b>66.2 wks</b>	<b>Wed 21/02/</b>	<b>Wed 28/05/25</b>													
7	<b>Preliminaries including management plans approvals etc.</b>	<b>12 wks</b>	<b>Wed 21/02/</b>	<b>Tue 14/05/24</b>													
8	Insurances and Securities - including contract works	3 wks	Wed 21/02/	Tue 12/03/24													
9	Management plans and approvals (CEMP, traffic management, flood management)	12 wks	Wed 21/02/	Tue 14/05/24													
10	<b>Material Procurement - critical items</b>	<b>16 wks</b>	<b>Wed 21/02/</b>	<b>Tue 11/06/24</b>													
11	<b>Coffer Dam</b>	<b>8 wks</b>	<b>Wed 21/02/</b>	<b>Tue 16/04/24</b>													
12	Design and approvals	4 wks	Wed 21/02/	Tue 19/03/24													
13	Manufacture for installation	4 wks	Wed 20/03/	Tue 16/04/24													
14	<b>Materials</b>	<b>16 wks</b>	<b>Wed 21/02/</b>	<b>Tue 11/06/24</b>													
15	Concrete	13 wks	Wed 21/02/	Tue 21/05/24													
16	Anchors and accessories	3 wks	Wed 21/02/	Tue 12/03/24													
17	Reinforcement bars	3 wks	Wed 13/03/	Tue 2/04/24													
18	Waterstops	16 wks	Wed 21/02/	Tue 11/06/24													
19	<b>Key Subcontractors</b>	<b>7 wks</b>	<b>Wed 21/02/</b>	<b>Tue 9/04/24</b>													
20	Site craneage	3 wks	Wed 21/02/	Tue 12/03/24													
21	Anchor installations	3 wks	Wed 28/02/	Tue 19/03/24													
22	Concrete works	3 wks	Wed 6/03/2	Tue 26/03/24													
23	Temporary works	3 wks	Wed 13/03/	Tue 2/04/24													
24	Demolition works	3 wks	Wed 20/03/	Tue 9/04/24													
25	<b>Onsite works</b>	<b>46.2 wks</b>	<b>Wed 15/05/</b>	<b>Wed 2/04/25</b>													
26	<b>Site Establishment</b>	<b>6 wks</b>	<b>Wed 15/05/</b>	<b>Tue 25/06/24</b>													
27	Site compound, access roads, environmental controls	4 wks	Wed 15/05/	Tue 11/06/24													
28	Dewatering of downstream stilling basin and river	2 wks	Wed 22/05/	Tue 4/06/24													
29	Craneage setup including tower cranes and material storage areas	1 wk	Wed 5/06/2	Tue 11/06/24													
30	Coffer dam setup - left abutment protection	2 wks	Wed 12/06/	Tue 25/06/24													
31	<b>Spillway Construction</b>	<b>19.3 wks</b>	<b>Wed 26/06/</b>	<b>Thu 7/11/24</b>													
32	<b>Stage 1: LH Abutment</b>	<b>19.3 wks</b>	<b>Wed 26/06/</b>	<b>Thu 7/11/24</b>													
33	Anchors	7.5 wks	Wed 26/06/	Fri 16/08/24													
34	Baffle block extensions	11 wks	Fri 19/07/24	Fri 4/10/24													
35	Under slab drainage adjustment	4 wks	Wed 26/06/	Tue 23/07/24													
36	<b>Slab construction</b>	<b>6.8 wks</b>	<b>Fri 16/08/24</b>	<b>Thu 3/10/24</b>													
37	<b>Slab 1</b>	<b>4.8 wks</b>	<b>Fri 16/08/24</b>	<b>Thu 19/09/24</b>													
39	<b>Slab 2</b>	<b>5.8 wks</b>	<b>Fri 23/08/24</b>	<b>Thu 3/10/24</b>													
41	<b>Slab 3</b>	<b>4.8 wks</b>	<b>Fri 16/08/24</b>	<b>Thu 19/09/24</b>													
43	<b>Slab 4</b>	<b>5.8 wks</b>	<b>Fri 23/08/24</b>	<b>Thu 3/10/24</b>													
45	<b>Slab 5 and 6</b>	<b>4.8 wks</b>	<b>Fri 16/08/24</b>	<b>Thu 19/09/24</b>													
47	<b>Slab 7</b>	<b>5.8 wks</b>	<b>Fri 23/08/24</b>	<b>Thu 3/10/24</b>													
49	<b>Slab 8</b>	<b>4.8 wks</b>	<b>Fri 16/08/24</b>	<b>Thu 19/09/24</b>													
51	Chute block adjustment	6 wks	Thu 26/09/2	Thu 7/11/24													
52	Misc. works and defects management	1 wk	Thu 3/10/24	Thu 10/10/24													
53	<b>Rip rap rock protection to abutment</b>	<b>4 wks</b>	<b>Thu 3/10/24</b>	<b>Thu 31/10/24</b>													
54	Concrete works to existing accessway	2 wks	Thu 3/10/24	Thu 17/10/24													
55	Rip rap replacement	2 wks	Thu 17/10/2	Thu 31/10/24													
56	<b>Stage 2:RH Abutment</b>	<b>21.6 wks</b>	<b>Thu 10/10/2</b>	<b>Tue 11/03/25</b>													
57	Coffer dam changeover - including protection of right abutment and pump down	2 wks	Thu 10/10/2	Thu 24/10/24													
58	<b>Anchors</b>	<b>5 wks</b>	<b>Thu 24/10/2</b>	<b>Thu 28/11/24</b>													
59	Upper level	2.5 wks	Thu 24/10/2	Mon 11/11/24													
60	lower level	2.5 wks	Tue 12/11/2	Thu 28/11/24													
61	<b>Baffle Block extensions</b>	<b>6 wks</b>	<b>Tue 12/11/2</b>	<b>Mon 23/12/24</b>													
62	Upper level	3.5 wks	Tue 12/11/2	Thu 5/12/24													
63	lower level	3.5 wks	Thu 28/11/2	Mon 23/12/24													
64	Under slab drainage adjustment	1 wk	Thu 24/10/2	Thu 31/10/24													
65	<b>Slab Construction</b>	<b>17.1 wks</b>	<b>Tue 12/11/2</b>	<b>Tue 11/03/25</b>													
66	Upper level	14.4 wks	Tue 12/11/2	Wed 19/02/25													
67	<b>Slab 12</b>	<b>4.8 wks</b>	<b>Tue 12/11/2</b>	<b>Fri 13/12/24</b>													
69	<b>Slab 13</b>	<b>4.8 wks</b>	<b>Mon 16/12/</b>	<b>Thu 16/01/25</b>													
71	<b>Slab 14</b>	<b>4.8 wks</b>	<b>Fri 17/01/25</b>	<b>Wed 19/02/25</b>													
73	<b>Lower Level</b>	<b>14.6 wks</b>	<b>Thu 28/11/2</b>	<b>Tue 11/03/25</b>													
74	<b>Slab 9</b>	<b>4.6 wks</b>	<b>Thu 28/11/2</b>	<b>Tue 31/12/24</b>													
76	<b>Slab 10</b>	<b>5.4 wks</b>	<b>Tue 31/12/2</b>	<b>Thu 6/02/25</b>													
78	<b>Slab 11</b>	<b>4.6 wks</b>	<b>Thu 6/02/25</b>	<b>Tue 11/03/25</b>													
80	Chute block adjustment	5 wks	Tue 31/12/2	Tue 4/02/25													
81	<b>Rip rap rock protection to abutment</b>	<b>2 wks</b>	<b>Thu 20/02/2</b>	<b>Wed 5/03/25</b>													
82	Concrete works to existing accessway	2 wks	Thu 20/02/2	Wed 5/03/25													
83	Rip rap replacement	2 wks	Thu 20/02/2	Wed 5/03/25													
84	Misc Works and Defects management	2 wks	Tue 25/02/2	Tue 11/03/25													
85	<b>Site Demobilisation</b>	<b>4 wks</b>	<b>Thu 6/03/25</b>	<b>Wed 2/04/25</b>													
86	Coffer dam removal	1 wk	Thu 6/03/25	Wed 12/03/25													
87	<b>Tower crane removal</b>	<b>1 wk</b>	<b>Thu 13/03/2</b>	<b>Wed 19/03/25</b>													
90	Access road and compounds	3 wks	Thu 13/03/2	Wed 2/04/25													
91	<b>Contingency and Risk Allowance</b>	<b>8 wks</b>	<b>Thu 3/04/25</b>	<b>Wed 28/05/25</b>													
92	Inclment weather	6 wks	Thu 3/04/25	Wed 14/05/25													
93	Scheduling conflict contingency (40 weeks +50%)	2 wks	Thu 15/05/2	Wed 28/05/25													



Project: mspproj11  
Date: Mon 10/07/23

Task		External Tasks		Manual Task		Finish-only
Split		External Milestone		Duration-only		Manual Progress
Milestone		Inactive Task		Manual Summary Rollup		Deadline
Summary		Inactive Milestone		Manual Summary		Critical
Project Summary		Inactive Summary		Start-only		Critical Split
						Progress