

Senate inquiry into indefinite detention

**Department of the Senate
Community Affairs Committee**



Easy English February 2016

This factsheet has some hard words.

The first time we write a hard word it is in **blue**.

We will say what the hard word means.

What this factsheet is about



This factsheet is about the **Senate inquiry into indefinite detention** in Australia.

The **Senate** is a group of politicians from the Australian Parliament.

Sometimes politicians talk to people about **problems**. This is called an **inquiry**.

Who can be part of this inquiry?



You are in indefinite detention and have a

- **cognitive impairment**

or

- **psychiatric impairment**

or

you have been in indefinite detention before

and you have a

- **cognitive impairment**

or

- **psychiatric impairment.**

What is indefinite detention?



Indefinite detention is when a person is

- in a jail



- in a hospital for people with **psychiatric impairment**

and



- **not** allowed to leave that place.



No one knows when the person will be allowed to leave the jail or hospital.



A person could be sent into indefinite detention by

- a court



- a judge



- a doctor.

What is cognitive impairment?



Impairment means something does **not** work the right way.

Cognitive impairment means a person can find it hard to



- learn new things
- remember.

A person might have a cognitive impairment because they have



- down syndrome
- intellectual disability
- a brain injury.



What is psychiatric impairment?

Psychiatric impairment means a person sometimes has problems with



- the way they think



- feelings



- behaviour.

A person with a psychiatric impairment might be



- very sad



- very worried

- very confused.

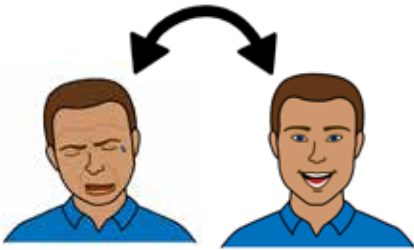
Someone might have a psychiatric impairment because they have



- depression



- schizophrenia



- bipolar mood disorder.

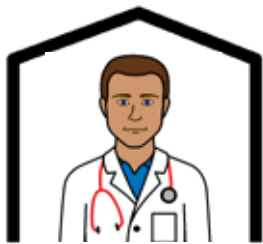
What we want to know

Are you in or have you been in
indefinite detention?



For example

- in a jail



- in a hospital for people with
psychiatric impairment

and



- you are **not** allowed to leave.

Tell us about it.

Do you have a cognitive or psychiatric impairment?

For example



- brain injury

- intellectual disability



- mental health problems



- **foetal alcohol syndrome**. This means your mum had too much alcohol while pregnant. You have a disability because of this.

Tell us about it.



Do you get help from the government?

Does the government help you to



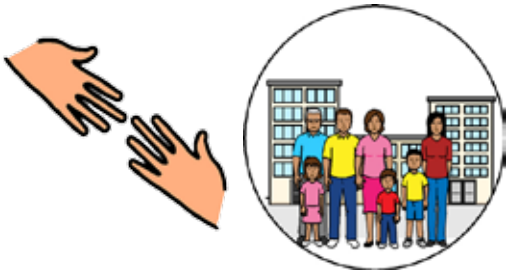
- get tests

- get treatment



- find somewhere to stay?

Tell us about it.



Do other groups in the community help you?



For example

- church groups



- community health services



- support groups.

Tell us about it.



Have you had an **advocate**?

An advocate can help you



- make decisions



- say what you want



- understand.



An advocate can be a

- friend
- family member
- volunteer
- staff member.

Tell us about it.



Programs in jail

If you are in a jail, are there programs to help you? Tell us



- how many different programs there are



- do the programs work?



Services in hospital

If you are in hospital, are there services to help you? Tell us



- how many different services there are



- do the services work?



Have you ever tried to hurt yourself?



What help did you get?



Have you ever tried to hurt other people?



What help did you get?



Has someone tried to hurt you?



What help did you get?

Tell us about it.

Have you been **restrained**?

Restrained means you are **not** able to move freely.



For example have you been

- strapped to a chair



- tied to a bed?

Tell us about it.



Are you Aboriginal or Torres Strait Islander?

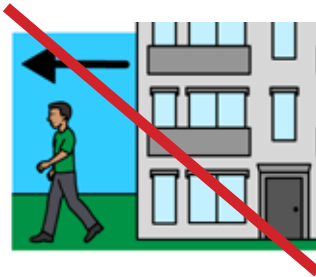


Are you

- in a jail



- in a hospital for people with psychiatric impairment



- and you are **not** allowed to leave?

Tell us about it.

How to tell us about it

You can



Write

Senate Standing Committees on
Community Affairs
PO Box 6100
Parliament House
Canberra ACT 2600



Call

02 6277 3515



Email

community.affairs.sen@aph.gov.au

April 2016						
S	M	T	W	T	F	S
					1	2
3	4	5	6	7	8	9
10	11	12	13	14	15	16
17	18	19	20	21	22	23
24	25	26	27	28	29	30

You **must** tell us about it before

8 April 2016.

© Scope (Aust) Ltd. You may use this document for your own personal, non-commercial purposes **only**. You must not use the document for any other purpose, and must not copy, reproduce, digitise, communicate, adapt, modify the document or any part of it (or authorise any other person to do so) without the prior consent of Scope (Aust) Ltd.

Scope's Communication and Inclusion Resource Centre

wrote the Easy English. February 2016 www.scopevic.org.au

To see the original contact The Department of the Senate.

The Picture Communication Symbols ©1981–2010 by Mayer-Johnson LLC a Tobii Dynavox company. All Rights Reserved Worldwide. Used with permission. Boardmaker™ is a trademark of Mayer-Johnson LLC.

ClipArt © Inspired Services, UK. www.inspiredservices.org.uk