

# **CRITICAL MAINTENANCE WORKS**



**ROBERT NIELSEN**

**DIRECTOR – CAPITAL WORKS**

DEPARTMENT OF PARLIAMENTARY SERVICES

PARLIAMENT OF NEW SOUTH WALES



# ACKNOWLEDGEMENT OF COUNTRY



**Funding**

**Strategy**

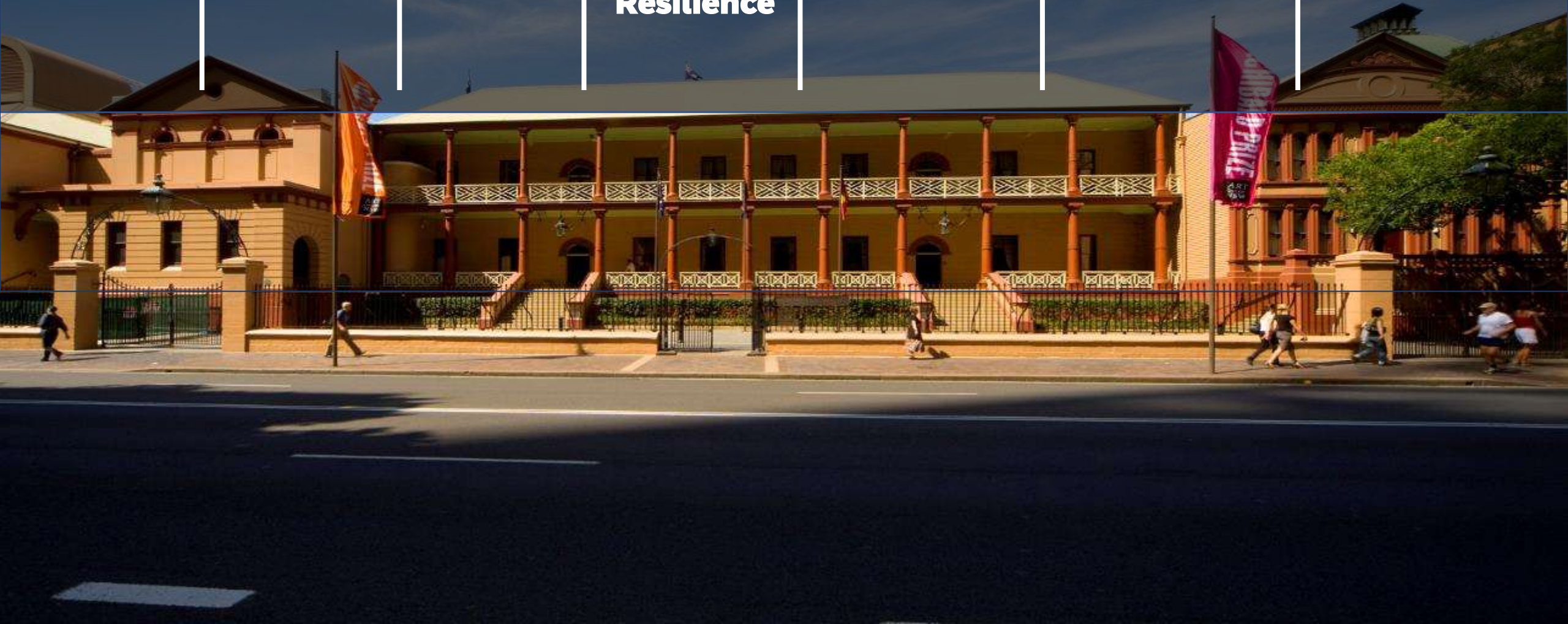
**Scale of  
Program**

**Innovative  
Thinking  
and  
Resilience**

**Change  
Management**

**Stakeholder  
Management**

**Team  
Capability and  
Dynamics**





# FUNDING

---

Advocacy with  
Presiding Officers.

---

Timing

---

Value for Money

---

Future Proofing

---

Broader vision for the  
future

# STRATEGY

---

Assessment of the entire  
Parliamentary Precinct.

---

Utilising the opportunity  
that the Bicentenary  
created.

---

Multiple Projects / Work  
Zones.

---

Integration with  
technology.

---

Sourcing off-site  
accommodation.

---

Impact on parliamentary  
operations and ability to  
pivot.

# SCALE

Roof membrane  
and skylight

Café Quorum

Level 8 Corporate  
Accommodation

Preston Stanley  
room

5G mobile  
phone antenna  
division bell  
systems  
(throughout)



# STRATEGY

Assessment of the entire Parliamentary Precinct.

Utilising the opportunity that the Bicentenary created.

Multiple Projects / Work Zones.

Integration with technology.

Sourcing off-site accommodation.

Impact on parliamentary operations and ability to pivot.

# SCALE OF PROGRAM

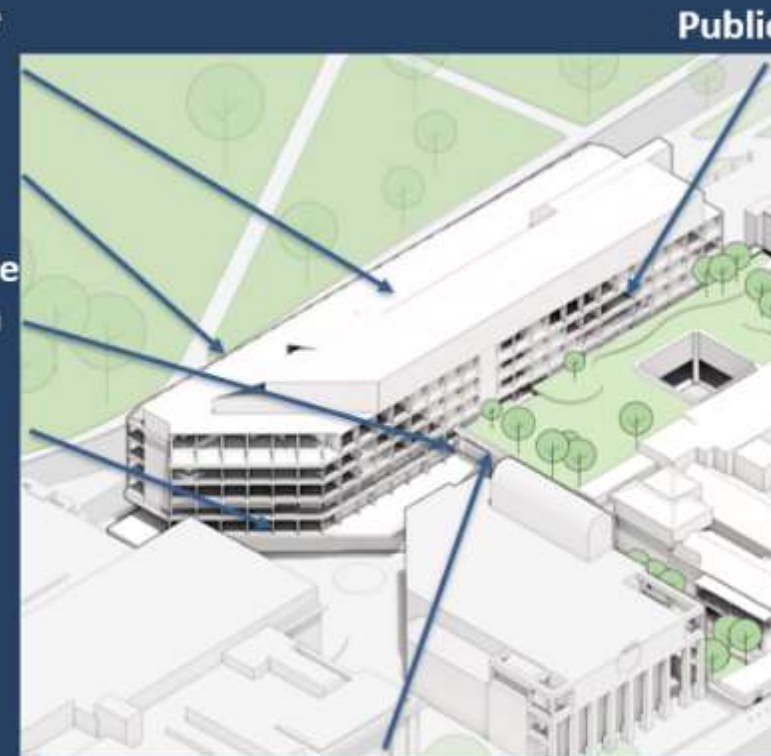
Roof membrane and skylight

Café Quorum

Level 8 Corporate Accommodation

Preston Stanley room

5G mobile phone antenna division bell systems (throughout)



Atrium (North)

Public

H

# SCALE OF PROGRAM



Roof membrane  
and skylight

Café Quorum

Level 8 Corporate  
Accommodation

Preston Stanley  
room

5G mobile  
phone antenna  
division bell  
systems  
(throughout)



Public Café

Atrium (South)

Jubilee room

LC Chamber

Rum Hospital

Facades

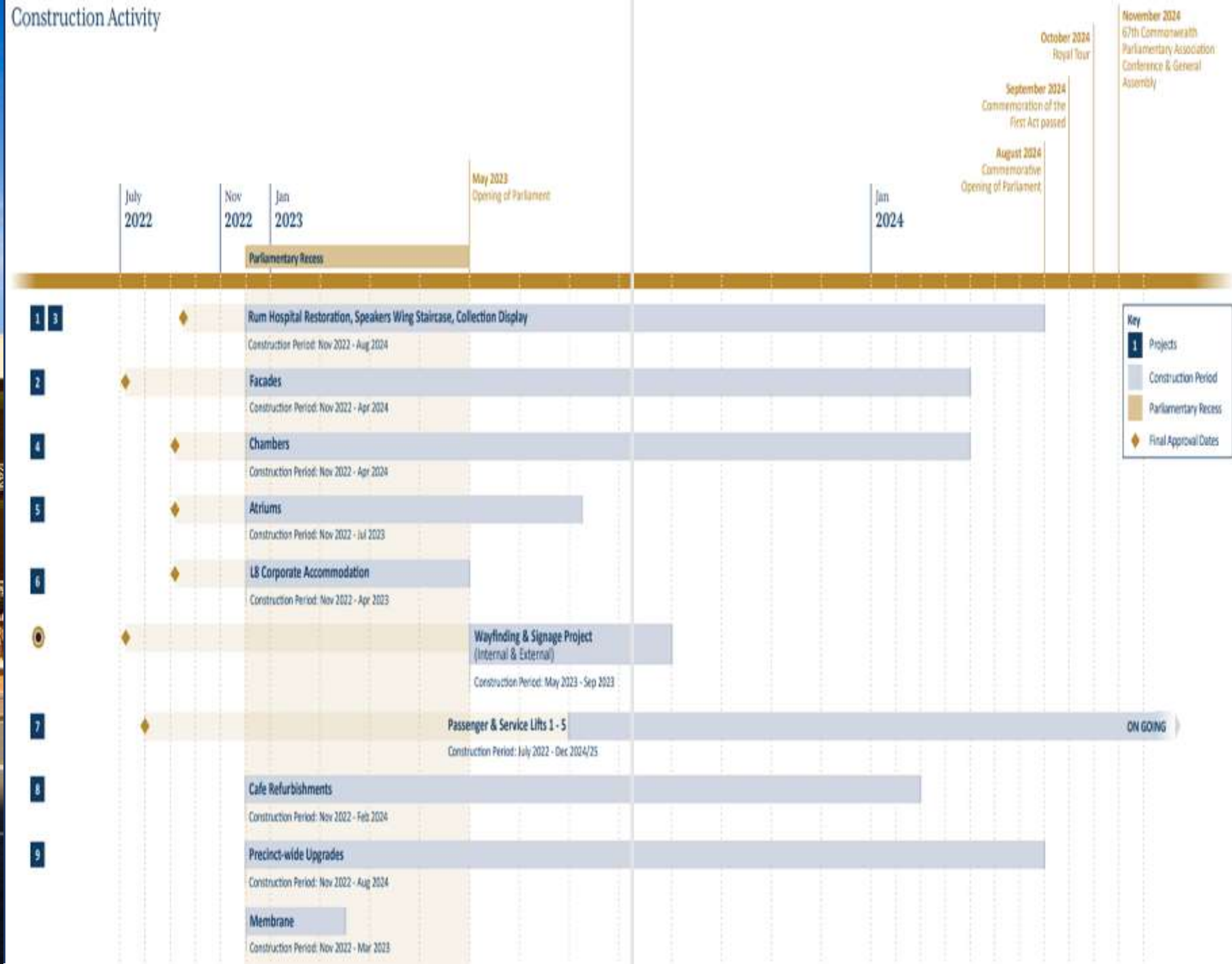
Atrium (North)

Historic Staircase

LA Chamber



# Construction Activity







# INNOVATIVE THINKING AND RESILIENCE

---

Impact of COVID

---

Future of office space (post  
COVID)

---

Multiple Projects / Work  
Zones

# CHANGE MANAGEMENT

---

Realignment of priorities  
(Following robust discussions  
with POs)

---

Preliminary investigations  
undertaken whilst engaging with  
internal and external  
stakeholders.

---

Decanting and early works.

---

Outsourcing services  
(removalists for delivery to  
upholsterers).

---

Electorate Offices (EOs)

# STAKEH MANAGI

---

Presentations/  
Sessions

---

Opportunities for  
Engagement

---

Regular Comm

---

On-Site Inspect



# CHANGE MANAGEMENT

Realignment of priorities  
(Following robust discussions with POs)

Preliminary investigations undertaken whilst engaging with internal and external stakeholders.

Decanting and early works.

Outsourcing services (removalists for delivery to upholsterers).

Electorate Offices (EOs)

# STAKEHOLDER MANAGEMENT

Presentations/Information Sessions

Opportunities for Engagement

Regular Communications

On-Site Inspections

# TEAM CAPABILITY AND DIVERSITY

Team size and composition

Clearly defined documentation

Internal and external collaboration.

Resilience and flexibility

Planned social and community engagement



# STAKEHOLDER MANAGEMENT

---

Presentations/Information  
Sessions

---

Opportunities for  
Engagement

---

Regular Communications

---

On-Site Inspections

# TEAM CAPABILITY AND DYNAMICS

---

Team size and capability.

---

Clearly defined processes and  
documentation.

---

Internal and external  
collaboration.

---

Resilience and tenacity.

---

Planned social activities.

# TEAM CAPABILITY AND DYNAMICS

Team size and capability.

Clearly defined processes and documentation.

Internal and external collaboration.

Resilience and tenacity.

Planned social activities.



# Tower Block Roof Membrane and Skylight Replacement

**Background** The Tower Block was built in 1978.

The roof membrane (Levels 12-15), walkways & plant areas were given a warranted 25 year lifespan.

The membrane has passed its useable life by 20 years, leading to waterproofing issues.

The skylight glazing is being upgraded to meets today's requirements.

**Current Status** Project is on track to be completed by end of April 2023 dependent on the weather.



# Northern & Southern Atriums

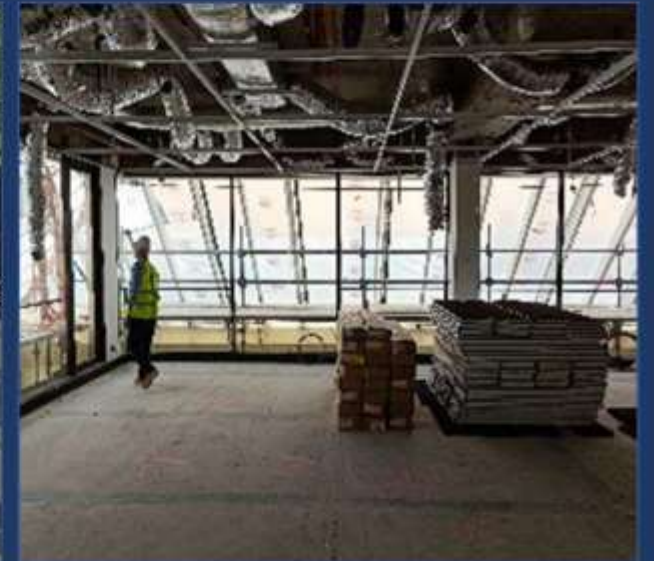
## Background

The 40-year-old atriums have started to deteriorate, compromising safety.

The Atrium Upgrade project will replace the existing glazing to meet modern safety standards.

## Current Status

Project is on track to be completed by end of April 2023.



# Level 8 Corporate Accommodation (including Ceiling Replacement)

## Background

The modernisation of the corporate accommodation (Level 8) will improve the facilities and services available to those who work on the floor. This specific work will be the final stage of a five-year project.

The work will include replacing ceilings and building services, addressing Work Health and Safety issues and the outdated office amenities to create a more efficient working environment.

## Current Status

Project is on track to be completed in April 2023.



# Legislative Council Chamber

## Background

The proposed work to both the LC and LA Chamber will address existing water and mould damage, accessibility issues, and general wear and tear of the Chamber's furnishing and finishes.

Broadcasting system upgrade to the LC Chamber.



## Current Status

Project is on track to be completed by end of April 2023.





# Legislative Assembly Chamber

## Background

The proposed work to both the LC and LA Chamber will address existing water and mould damage, accessibility issues, and general wear and tear of the Chamber's furnishing and finishes.

Alterations made to the LA table to improve accessibility.

## Current Status

Project is on track to be completed by end of April 2023.



# Rum Hospital

## Background

The proposed work of restoration and conservation of the Rum Hospital on both Level 7 and 8 will address safety concerns, building compliance, mould, and indoor air quality while conserving the oldest public building in Australia.

---



## Current Status

Project to continue into early 2024.

---



# Façades

## Background

The restoration of the building's Heritage Facades on Macquarie Street will focus on restoring the structural deterioration of the historic Rum Hospital frontage, including the Chambers and Speakers Wing building facades, and the Macquarie Street fence.

---



## Current Status

Project is on track to be completed by December 2023.

---



# Façades



# Minor Works Projects



**Precinct-Wide  
Upgrades**



**Passenger & Service  
Lifts Project**



**Café Refurbishment  
Project**



**Wayfinding &  
Signage Project**

# Electorate Offices



**New electoral boundaries -  
Electorate Redistribution**



**Refurbishment or  
construction of existing  
Electorate Offices.**



**Increase in space and team  
capacity.**



**Ensuring all Electorate  
Office sites meet  
Parliament's standards.**

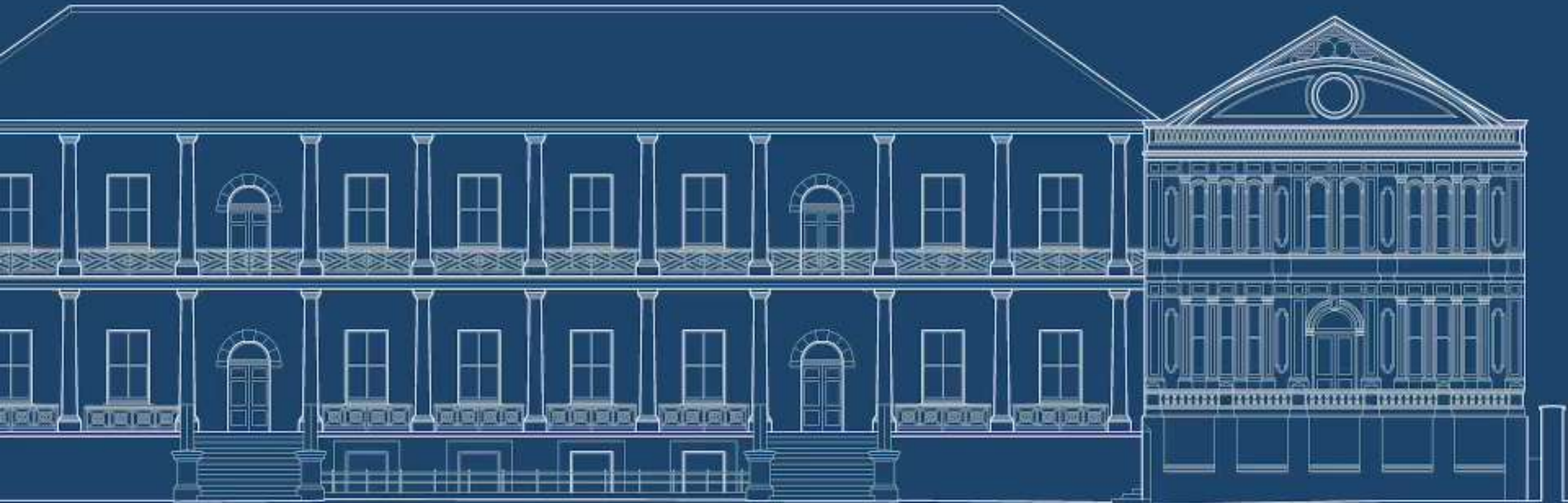
# Macquarie St East Precinct – Potential Southern Pavilion





PARLIAMENT OF NSW  
PARLIAMENT PRECINCT PLAN

# Macquarie St East Precinct – Potential Southern Pavilion







**ROBERT NIELSEN**

**DIRECTOR – CAPITAL WORKS**

DEPARTMENT OF PARLIAMENTARY SERVICES

PARLIAMENT OF NEW SOUTH WALES

**For more information visit: [www.parliament.nsw.gov.au](http://www.parliament.nsw.gov.au)**

**Contact us at: [dps.projects@parliament.nsw.gov.au](mailto:dps.projects@parliament.nsw.gov.au)**

