



Budget 2016-17

**Portfolio Budget Statements 2016-17
Budget Related Paper No. 1.17C**

Department of Parliamentary Services

Budget Initiatives and Explanations of
Appropriations Specified by Outcomes
and Programs by Entity

© Commonwealth of Australia 2016

ISBN 978-0-9806554-7-6

This publication is available for your use under a Creative Commons BY Attribution 3.0 Australia licence, with the exception of the Commonwealth Coat of Arms, the Department of Parliamentary Services (DPS) logo, photographs, images, signatures and where otherwise stated. The full licence terms are available from <http://creativecommons.org/licenses/by/3.0/au/legalcode>.



Use of DPS material under a Creative Commons BY Attribution 3.0 Australia licence requires you to attribute the work (but not in any way that suggests that DPS endorses you or your use of the work).

Department of Parliamentary Services material used 'as supplied'

Provided you have not modified or transformed DPS material in any way including, for example, by changing DPS text; calculating percentage changes; graphing or charting data; or deriving new statistics from published DPS statistics – then DPS prefers the following attribution:

Source: Department of Parliamentary Services

Derivative material

If you have modified or transformed DPS material, or derived new material from those of DPS in any way, then DPS prefers the following attribution:

Based on Department of Parliamentary Services data

Use of the Coat of Arms

The terms under which the Coat of Arms can be used are set out on the It's an Honour website (see www.itsanhonour.gov.au)

Other uses

Enquiries regarding this licence and any other use of this document are welcome at:

Mr Nicholas Creagh
Chief Finance Officer
Department of Parliamentary Services
(02) 6277 8954



PARLIAMENT OF AUSTRALIA
DEPARTMENT OF PARLIAMENTARY SERVICES

Senator the Hon Stephen Parry
President of the Senate
Parliament House
CANBERRA ACT 2600

The Hon Anthony Smith MP
Speaker of the House of Representatives
Parliament House
CANBERRA ACT 2600

1 May 2016

Dear Mr President and Mr Speaker

I hereby submit Portfolio Budget Statements in support of the 2016-17 Budget for the Department of Parliamentary Services.

These statements have been developed, and are submitted to the Parliament, as a statement on the outcomes for the department.

I present these statements to provide accountability to the Parliament and, through it, the public.

Yours sincerely

Robert Stefanic
Secretary

Abbreviations and conventions

The following notation may be used:

NEC/nec	not elsewhere classified
-	nil
..	not zero, but rounded to zero
na	not applicable (unless otherwise specified)
nfp	not for publication
\$m	\$ million
\$b	\$ billion

Figures in tables and in the text may be rounded. Figures in text are generally rounded to one decimal place, whereas figures in tables are generally rounded to the nearest thousand. Discrepancies in tables between totals and sums of components are due to rounding.

Enquiries

Should you have any enquiries regarding this publication please contact Mr Nicholas Creagh, Chief Finance Officer, Department of Parliamentary Services on (02) 6277 8954.

Links to Portfolio Budget Statements (including Portfolio Additional Estimates Statements and Portfolio Supplementary Additional Statements) can be located on the Australian Government Budget website at: www.budget.gov.au.

**USER GUIDE
TO THE
PORTFOLIO BUDGET STATEMENTS**

USER GUIDE

The purpose of the *2016-17 Portfolio Budget Statements* (PB Statements) is to inform Senators and Members of Parliament of the proposed allocation of resources to outcomes by Commonwealth entities. Entities receive resources from the annual appropriations acts, special appropriations (including standing appropriations and special accounts), and revenue from other sources.

A key role of the PB Statements is to facilitate the understanding of proposed annual appropriations in *Appropriation (Parliamentary Departments) Bill (No. 1) 2016-17*. In this sense, the PB Statements are Budget related papers and are declared by the Appropriation Acts to be 'relevant documents' to the interpretation of the Acts according to section 15AB of the *Acts Interpretation Act 1901*.

The PB Statements provide information, explanation and justification to enable Parliament to understand the purpose of each outcome proposed in the Bills.

As required under section 12 of the *Charter of Budget Honesty Act 1998*, only entities within the general government sector are included as part of the Commonwealth general government sector fiscal estimates and produce PB Statements where they receive funding (either directly or via portfolio departments) through the annual appropriation acts.

CONTENTS

Departmental overview	3
Department of Parliamentary Services	7
Section 1: Entity overview and resources	7
1.1 Strategic direction statement	7
1.2 Entity resource statement	8
1.3 Budget measures	9
Section 2: Outcomes and planned performance	10
2.1 Budgeted expenses and performance for Outcome 1	10
Section 3: Budgeted financial statements	18
3.1 Budgeted financial statements	18

DEPARTMENTAL OVERVIEW

DEPARTMENTAL OVERVIEW

The Department of Parliamentary Services (DPS) is one of four parliamentary departments supporting the Australian Parliament.

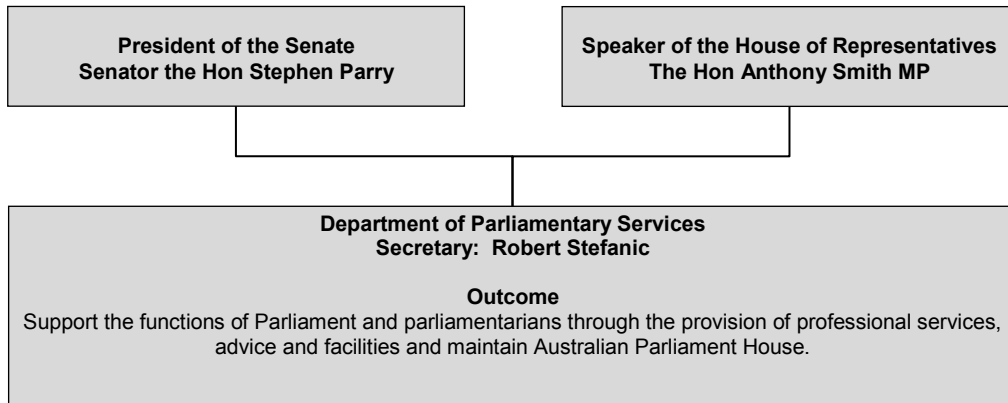
DPS supports the functions of the Australian Parliament and the work of parliamentarians through the provision of professional services, advice and facilities, the ongoing maintenance of Australian Parliament House; and makes the building, and the important activity that takes place within it, accessible. DPS reports to the Presiding Officers of the Parliament (the President of the Senate and the Speaker of the House of Representatives).

DPS provides, or facilitates the following:

- library and research services;
- information and communication technology services;
- security services;
- building, grounds and heritage management services;
- audio visual and Hansard services;
- art services;
- visitor services;
- food and beverage, retail, health, banking, and childcare services; and
- corporate, administrative and strategic services for DPS.

Departmental overview

Figure 1: Department of Parliamentary Services reporting structure and outcome



Department of Parliamentary Services

Entity resources and planned performance

DEPARTMENT OF PARLIAMENTARY SERVICES

Section 1: Entity overview and resources

1.1 STRATEGIC DIRECTION STATEMENT

The Department of Parliamentary Services (DPS) supports the functions of the Australian Parliament and the work of parliamentarians through the provision of professional services, advice and facilities, the ongoing maintenance of Australian Parliament House; and makes the building, and the important activity that takes place within it, accessible. DPS reports to the Presiding Officers of the Parliament (the President of the Senate and the Speaker of the House of Representatives).

DPS provides services and products to support the functioning of the Australian Parliament, and the work of parliamentarians. Working in collaboration with the house departments, DPS provides, or facilitates the following:

- library and research services;
- information and communication technology services;
- security services;
- building, grounds and heritage management services;
- audio visual and Hansard services;
- art services;
- visitor services;
- food and beverage, retail, health, banking, and childcare services; and
- corporate, administrative and strategic services for DPS.

To achieve our outcome, we are focused on four strategic themes. These themes have been used to identify our priorities, and will be used to organise our activities over the next four years.

Our four strategic themes are:

- Respond to the changing needs of Parliament;
- Develop our capability to promote strong stewardship and robust organisational resilience;
- Enhance the Parliament's engagement with community; and
- Effective stewardship of Australian Parliament House.

DPS operates in an environment with a range of significant challenges. Optimising our service capability and efficiency will be essential in addressing these challenges.

1.2 ENTITY RESOURCE STATEMENT

Table 1.1 shows the total resources from all sources. The table summarises how resources will be applied by outcome and by administered and departmental classification.

Information in this table is presented on a resourcing (i.e. appropriations/cash available) basis, whilst the 'Budgeted expenses by Outcome' table in Section 2 and the financial statements in Section 3 are presented on an accrual basis.

Table 1.1: DPS resource statement — Budget estimates for 2016-17 as at Budget May 2016

	2015-16 <i>Estimated actual \$'000</i>	2016-17 Estimate \$'000
Departmental		
Annual appropriations - ordinary annual services ^(a)		
Prior year appropriations available ^(b)	29,832	29,832
Departmental appropriation	119,003	118,568
s 74 retained revenue receipts ^(c)	7,579	7,619
Departmental capital budget ^(d)	22,921	22,516
<i>Total departmental annual appropriations</i>	<i>179,335</i>	<i>178,535</i>
Total departmental resourcing	179,335	178,535
Administered		
Annual appropriations - ordinary annual services ^(a)	6,703	6,993
Annual appropriations - other services - non-operating		
Prior year appropriations available	121,468	104,655
Administered assets and liabilities ^(e)	33,741	40,096
<i>Total administered annual appropriations</i>	<i>161,912</i>	<i>151,744</i>
Total administered resourcing	161,912	151,744
Total resourcing	341,247	330,279
	<i>2015-16</i>	<i>2016-17</i>
Average staffing level (number)	781	820

Prepared on a resourcing (i.e. appropriations available) basis.

Please note: All figures shown above are GST exclusive – these may not match figures in the cash flow statement.

(a) *Appropriation (Parliamentary Departments) Bill (No.1) 2016-17.*

(b) Excludes \$0.8m subject to quarantine by Finance or withheld under section 51 of the *Public Governance, Performance and Accountability Act 2013* (PGPA Act).

(c) Estimated retained revenue receipts under section 74 of the PGPA Act.

(d) Departmental capital budgets are not separately identified in *Appropriation (Parliamentary Departments) Bill (No.1)* and form part of ordinary annual services items. Please refer to Table 3.5 for further details. For accounting purposes, this amount has been designated as a 'contribution by owner'.

(e) *Appropriation (Parliamentary Departments) Bill (No.1) 2016-17* (refer to Table 3.10 for further details). For accounting purposes, this amount has been designated as a 'contribution by owner'.

Third party payments from and on behalf of other entities

	2015-16 Estimated actual \$'000	2016-17 Estimate \$'000
Payments made on behalf of another entity (as disclosed in the respective entity's resource statement)		
Department of Finance		
<i>Parliamentary Entitlements Act 1990</i>	24,334	19,968
<i>Administered Annual Appropriation Act (No. 1)</i>	225	351
Total Payments made on behalf of other agencies	24,559	20,319

1.3 BUDGET MEASURES

Budget measures in Part 1 relating to DPS are detailed in Budget Paper No. 2 and are summarised below.

Table 1.2: Entity 2016-17 Budget measures**Part 1: Measures announced since the 2015-16 Mid-Year Economic and Fiscal Outlook (MYEFO)**

Program	2015-16 \$'000	2016-17 \$'000	2017-18 \$'000	2018-19 \$'000	2019-20 \$'000
Capital measures					
Trans-Pacific Partnership					
- Implementation ^(a)	1				
Departmental capital	-	300	-	-	-
Total	-	300	-	-	-
Total measures					
Departmental	-	300	-	-	-
Total	-	300	-	-	-

(a) This funding is a component of a whole of government measure.

Prepared on a Government Finance Statistics (fiscal) basis. Figures displayed as a negative represent a decrease in funds and a positive represent an increase in funds.

Part 2: Other measures not previously reported in a portfolio statement

Program	2015-16 \$'000	2016-17 \$'000	2017-18 \$'000	2018-19 \$'000	2019-20 \$'000
Capital measures					
Parliamentary Departments					
- additional funding ^(a)	2				
Administered capital	-	-	-	-	-
Total	-	-	-	-	-
Total measures					
Administered	-	-	-	-	-
Total	-	-	-	-	-

(a) Funding provided from the contingency reserve for capital works to Australian Parliament House. The total amount provided is \$18.3m over 2016-17 and 2017-18.

Prepared on a Government Finance Statistics (fiscal) basis. Figures displayed as a negative represent a decrease in funds and a positive represent an increase in funds.

Section 2: Outcomes and planned performance

Outcomes are the intended results, impacts or consequences of actions by the Parliament for the Australian community. Programs are the primary vehicle by which parliamentary departments achieve the intended results of their outcome statements. Parliamentary Departments are required to identify the programs which contribute to parliamentary outcomes over the Budget and forward years.

The outcome for DPS is described below together with its related programs, specifying the performance indicators and targets used to assess and monitor the performance of DPS in achieving its outcome.

Note:

From 1 July 2015, performance reporting requirements in the Portfolio Budget Statements sit alongside those required under the enhanced commonwealth performance framework. It is anticipated that the performance criteria described in Portfolio Budget Statements will be read with broader information provided in an entity's corporate plans and annual performance statements - included in Annual Reports from October 2016 - to provide an entity's complete performance story.

2.1 BUDGETED EXPENSES AND PERFORMANCE FOR OUTCOME 1

Outcome 1: Support the functions of Parliament and parliamentarians through the provision of professional services, advice and facilities and maintain Australian Parliament House

Budgeted expenses for Outcome 1

This table shows how much the entity intends to spend (on an accrual basis) on achieving the outcome, broken down by program, as well as by Administered and Departmental funding sources.

Table 2.1.1: Budgeted expenses for Outcome 1

	2015-16 Estimated actual \$'000	2016-17 Budget \$'000	2017-18 Forward estimate \$'000	2018-19 Forward estimate \$'000	2019-20 Forward estimate \$'000
Outcome 1: Support the functions of Parliament and parliamentarians through the provision of professional services, advice and facilities and maintain Australian Parliament House					
Program 1: Parliamentary Services					
Departmental expenses					
Departmental appropriation	119,003	118,568	118,781	119,912	120,992
s 74 Retained revenue receipts ^(a)	7,579	7,619	7,660	7,702	7,702
Expenses not requiring appropriation in the Budget year ^(b)	23,140	23,140	23,140	23,140	23,140
Departmental total	149,722	149,327	149,581	150,754	151,834
Total expenses for program 1.1	149,722	149,327	149,581	150,754	151,834
Program 2: Parliament House Works Program					
Administered expenses					
Ordinary annual services (Appropriation (Parliamentary Departments) Bill No. 1)	6,703	6,993	5,373	5,229	5,328
Expenses not requiring appropriation in the Budget year ^(b)	31,498	33,403	33,813	34,122	34,122
Administered total	38,201	40,396	39,186	39,351	39,450
Total expenses for program 1.2	38,201	40,396	39,186	39,351	39,450
Outcome 1 Totals by appropriation type					
Administered expenses					
Ordinary annual services (Appropriation (Parliamentary Departments) Bill No. 1)	6,703	6,993	5,373	5,229	5,328
Expenses not requiring appropriation in the Budget year ^(b)	31,498	33,403	33,813	34,122	34,122
Administered total	38,201	40,396	39,186	39,351	39,450
Departmental expenses					
Departmental appropriation	119,003	118,568	118,781	119,912	120,992
s74 Retained revenue receipts ^(a)	7,579	7,619	7,660	7,702	7,702
Expenses not requiring appropriation in the Budget year ^(b)	23,140	23,140	23,140	23,140	23,140
Departmental total	149,722	149,327	149,581	150,754	151,834
Total expenses for Outcome 1	187,923	189,723	188,767	190,105	191,284

DPS Budget Statements

Table 2.1.1: Budgeted expenses for Outcome 1 (continued)

Movement of administered funds between years ^(c)	2015-16 Estimated	2016-17 Budget	2017-18 Forward	2018-19 Forward	2019-20 Forward
Outcome 1:					
Parliament House Works Program	(23,100)	11,500	11,600	-	-
Total movement of administered funds	(23,100)	11,500	11,600	-	-
Average staffing level (number)	2015-16 781	2016-17 820			

(a) Estimated expenses incurred in relation to receipts retained under section 74 of the PGPA Act.

(b) Expenses not requiring appropriation in the Budget year are made up of depreciation expenses, amortisation expenses and audit fees.

(c) Figures displayed as a negative represent a decrease in funds and a positive represent an increase in funds.

Note: Departmental appropriation splits and totals are indicative estimates and may change in the course of the budget year as priorities change.

Table 2.1.2: Performance criteria for Outcome 1

Table 2.1.2 below details the performance criteria for each program associated with Outcome 1. It also summarises how each program is delivered and where 2016-17 Budget measures have created new programs or materially changed existing programs.

Outcome 1 – Support the functions of Parliament and parliamentarians through the provision of professional services, advice and facilities and maintain Australian Parliament House.		
Program 1 –Parliamentary Services		
<ul style="list-style-type: none"> • Explore and develop innovative technology and systems for the delivery of timely information and services to parliamentarians. • Retain the Parliamentary Library’s position as our client’s preferred and trusted source of high quality information, analysis and advice. • Examine cost effective and innovative ways to deliver our services. • Enhance our visitor experience and community engagement including the use of social media and emerging technologies. • Enhance electronic access to parliamentary information for the community to easily engage with the parliamentary process. 		
Delivery	<ul style="list-style-type: none"> • Provide a range of research, information and reporting services to support the Parliament and the work of parliamentarians, and engage the community. • Provide services to building occupants to enable them to conduct their work. • Provide ICT services to electorate offices to enable them to conduct their work. • Provide services and facilities for visitors to Parliament House. 	
Performance Information		
Year	Performance criteria^(a)	Targets
2015-16	<p>Number and types of visitor interactions</p> <ul style="list-style-type: none"> - Number of visitors - Number of virtual visitors - Number of visitors for DPS educational tours - Number of participants to DPS organised tours and events <p>Visitor satisfaction with Australian Parliament House Experience</p> <ul style="list-style-type: none"> - % of visitor feedback indicating their visit met or exceeded expectations - % of virtual visitor feedback indicating their visit met or exceeded expectations - % of school/education visitor feedback indicating their visit met expectations and was relevant to classroom learning/curriculum - % of participants attending DPS tours and events indicating their visit met or exceeded expectations 	<p>Equivalent or greater to same period last year</p> <p>85% satisfaction</p>

DPS Budget Statements

	<p>Building occupant satisfaction within timeliness and quality of DPS services</p> <ul style="list-style-type: none"> - % of building occupant feedback indicating a satisfied or neutral rating with timeliness and quality of DPS services (by DPS service category) - % of Parliamentary satisfaction with Art Collection Services <p>Parliamentary Library Service KPIs are achieved</p> <ul style="list-style-type: none"> - % of Library Services KPIs is set out in the annual Library Resource Agreement that are achieved <p>ICT Service Standards are achieved</p> <ul style="list-style-type: none"> - % of ICT Standards outlined in the ICT SLA that are achieved <p>Hansard Service KPIs are achieved</p> <ul style="list-style-type: none"> - % of individual draft speeches delivered within two hours of speech finishing - % of electronic proof Hansard reports delivered within agreed timeframes - % of committee transcripts delivered within agreed timeframes 	<p>75% satisfaction</p> <p>90%</p> <p>90%</p> <p>85%</p> <p>95%</p> <p>95%</p>
2016-17 and beyond	<p>Number and types of visitor interactions</p> <ul style="list-style-type: none"> - Number of visitors - Number of virtual visitors - <i>Number of visitors for DPS school tours</i> - Number of participants to DPS organised tours and events <p>Visitor satisfaction with Australian Parliament House Experience</p> <ul style="list-style-type: none"> - % of visitor feedback indicating their visit met or exceeded expectations - % of virtual visitor feedback indicating their visit met or exceeded expectations - <i>% of school visitor feedback indicating their visit met expectations</i> - % of participants attending DPS tours and events indicating their visit met or exceeded expectations <p>Building occupant satisfaction within timeliness and quality of DPS services</p> <ul style="list-style-type: none"> - % of building occupant feedback indicating a satisfied or neutral rating with timeliness and quality of DPS services (by DPS service category) 	<p>Equivalent or greater to same period last year</p> <p>85% satisfaction</p> <p>75% satisfaction</p>

	<p>Parliamentary Library Service KPIs are achieved - % of Library Services KPIs is set out in the annual Library Resource Agreement that are achieved</p> <p>ICT Service Standards are achieved - % of ICT Standards outlined in the ICT SLA that are achieved</p> <p>Hansard Service KPIs are achieved - % of individual draft speeches delivered within two hours of speech finishing - % of electronic proof Hansard reports delivered within agreed timeframes - % of committee transcripts delivered within agreed timeframes</p>	<p>90%</p> <p>90%</p> <p>85%</p> <p>95%</p> <p>95%</p>
Purposes	<p>The Department of Parliamentary Services (DPS) supports the functions of the Australian Parliament and the work of parliamentarians through the provision of professional services, advice and facilities, the ongoing maintenance of Australian Parliament House; and makes the building, and the important activity that takes place within it, accessible.</p>	

- (a) New or modified performance criteria that reflect new or materially changed programs are shown in italics.

Program 2 – Parliament House Works Program		
<ul style="list-style-type: none"> • Ensure adaptations of the building uses are strategic, appropriate and reference design integrity principles. • Ensure a secure environment while maintaining public accessibility. • Effectively manage a capital works program for Australian Parliament House to function effectively as a safe and accessible workplace. • Effectively manage all assets within Australian Parliament House including collections. 		
Delivery	<ul style="list-style-type: none"> • Strategically plan to maintain and upgrade Parliament House; • Maintain Parliament House as a safe and accessible workplace and public building; • Plan, develop and deliver into service an ongoing building works program; and • Plan and deliver physical security upgrades to Parliament House. 	
Performance Information		
Year	Performance criteria^(a)	Targets
2015-16	Design Integrity Rating - % of significant building changes (not like-for-like) resulting in an unchanged or positive impact to the Design Integrity of the Building	90%
	Building Condition Rating - % of building areas reviewed that are assessed as being in fair or better condition.	90%
	Landscape Condition Rating - % of landscaped areas reviewed that are assessed as being in good or better condition	90%
	Engineering Systems Rating - % of critical engineering systems reviewed that are assessed as being in fair or better condition	90%
2016-17 and beyond	Continuity of design integrity - % of projects that have a material impact on design integrity of the building where design integrity is maintained or improved	90%
	Building Condition Rating - % of building areas reviewed that are assessed as being in good or better condition.	80%
	Landscape Condition Rating - % of landscaped areas reviewed that are assessed as being in good or better condition	85%

	<p>Engineering Systems Rating <i>- % of critical engineering systems reviewed that are assessed as being in good or better condition</i></p>	<p>90%</p>
<p>Purposes</p>	<p>The Department of Parliamentary Services (DPS) supports the functions of the Australian Parliament and the work of parliamentarians through the provision of professional services, advice and facilities, the ongoing maintenance of Australian Parliament House; and makes the building, and the important activity that takes place within it, accessible.</p>	

- (a) New or modified performance criteria that reflect new or materially changed programs are shown in italics.

Section 3: Budgeted financial statements

Section 3 presents budgeted financial statements which provide a comprehensive snapshot of entity finances for the 2016-17 budget year, including the impact of budget measures and resourcing on financial statements.

3.1 BUDGETED FINANCIAL STATEMENTS

3.1.1 Differences between entity resourcing and financial statements

The Resource Statement (Table 1.1) provides a consolidated view of resources available to DPS in 2016-17, appropriated in both the budget year and prior years, where they remain unspent and available. This table is prepared on a cash basis; however, this contrasts to the budgeted financial statements (which are presented in the tables that follow), which are prepared in accordance with Australian Accounting Standards.

3.1.2 Explanatory notes and analysis of budgeted financial statements

Comprehensive Income Statement

When compared with estimates disclosed in the 2015-16 PB Statements, departmental revenue from Government has decreased by \$0.1 million in 2016-17, \$0.3 million in 2017-18 and \$0.4 million in 2018-19. This decrease is due to the impact of changes in price parameters, offset by additional funding provided in the 2016-17 Budget for employee superannuation.

DPS is forecasting a balanced income statement result in 2016-17 and across the Forward Estimates (excluding depreciation and amortisation, for which the department is not appropriated).

The administered suppliers expenditure estimates for 2016-17 and the Forward Estimates have decreased marginally as a result of changes in price parameters.

Balance Sheet

The departmental net assets position is anticipated to decrease by \$0.5 million on the 2015-16 position due to the operating deficit slightly exceeding the funding provided for capital expenditure.

The administered estimated net asset position is anticipated to increase by \$79.1 million in 2016-17 as a result of significant capital investment.

Capital Budget

DPS has moved \$23.1 million of administered capital expenditure from 2015-16 to 2016-17 (\$11.5 million) and 2017-18 (\$11.6 million).

3.2.1 Budgeted financial statements tables

Table 3.1: Comprehensive income statement (showing net cost of services) for the period ended 30 June

	2015-16 Estimated actual \$'000	2016-17 Budget \$'000	2017-18 Forward estimate \$'000	2018-19 Forward estimate \$'000	2019-20 Forward estimate \$'000
EXPENSES					
Employee benefits	83,199	84,268	85,440	85,833	87,404
Suppliers	43,523	42,059	41,141	41,921	41,430
Depreciation and amortisation	23,000	23,000	23,000	23,000	23,000
Total expenses	149,722	149,327	149,581	150,754	151,834
LESS:					
OWN-SOURCE INCOME					
Own-source revenue					
Sale of goods and rendering of services	5,195	5,195	5,195	5,195	5,195
Rental income	2,010	2,050	2,091	2,133	2,133
Other	374	374	374	374	374
Total own-source revenue	7,579	7,619	7,660	7,702	7,702
Gains					
Other	140	140	140	140	140
Total gains	140	140	140	140	140
Total own-source income	7,719	7,759	7,800	7,842	7,842
Net cost of services	(142,003)	(141,568)	(141,781)	(142,912)	(143,992)
Revenue from Government	119,003	118,568	118,781	119,912	120,992
Deficit attributable to the Australian Government	(23,000)	(23,000)	(23,000)	(23,000)	(23,000)
Total comprehensive loss	(23,000)	(23,000)	(23,000)	(23,000)	(23,000)
Total comprehensive loss attributable to the Australian Government	(23,000)	(23,000)	(23,000)	(23,000)	(23,000)

Note: Impact of net cash appropriation arrangements

	2015-16 \$'000	2016-17 \$'000	2017-18 \$'000	2018-19 \$'000	2019-20 \$'000
Total comprehensive loss excluding depreciation/amortisation expenses previously funded through revenue appropriations.	-	-	-	-	-
less depreciation/amortisation expenses previously funded through revenue appropriations ^(a)	23,000	23,000	23,000	23,000	23,000
Total comprehensive loss - as per the statement of comprehensive income	(23,000)	(23,000)	(23,000)	(23,000)	(23,000)

(a) From 2010-11, the Government introduced net cash appropriation arrangements where Bill 1 revenue appropriations for the depreciation/amortisation expenses of non-corporate Commonwealth entities (and select corporate Commonwealth entities) were replaced with a separate capital budget (the Departmental Capital Budget, or DCB) provided through Bill 1 equity appropriations. For information regarding DCBs, please refer to Table 3.5 Departmental Capital Budget Statement.

Prepared on Australian Accounting Standards basis.

Table 3.2: Budgeted departmental balance sheet (as at 30 June)

	2015-16 Estimated actual \$'000	2016-17 Budget \$'000	2017-18 Forward estimate \$'000	2018-19 Forward estimate \$'000	2019-20 Forward estimate \$'000
ASSETS					
Financial assets					
Cash and cash equivalents	432	432	432	432	432
Trade and other receivables	31,759	31,759	31,759	31,759	31,759
Total financial assets	32,191	32,191	32,191	32,191	32,191
Non-financial assets					
Property, plant and equipment	63,783	63,020	61,553	61,694	61,463
Intangibles	24,769	25,048	26,058	25,639	25,792
Inventories	275	275	275	275	275
Other non-financial assets	3,423	3,423	3,423	3,423	3,423
Total non-financial assets	92,250	91,766	91,309	91,031	90,953
Total assets	124,441	123,957	123,500	123,222	123,144
LIABILITIES					
Payables					
Suppliers	3,262	3,262	3,262	3,262	3,262
Other payables	164	164	164	164	164
Total payables	3,426	3,426	3,426	3,426	3,426
Provisions					
Employee provisions	23,649	23,649	23,649	23,649	23,649
Total provisions	23,649	23,649	23,649	23,649	23,649
Total liabilities	27,075	27,075	27,075	27,075	27,075
Net assets	97,366	96,882	96,425	96,147	96,069
EQUITY*					
Parent entity interest					
Contributed equity	222,022	244,538	267,081	289,803	312,725
Reserves	20,331	20,331	20,331	20,331	20,331
Accumulated deficit	(144,987)	(167,987)	(190,987)	(213,987)	(236,987)
Total parent entity interest	97,366	96,882	96,425	96,147	96,069
Total equity	97,366	96,882	96,425	96,147	96,069

* 'Equity' is the residual interest in assets after deduction of liabilities.
Prepared on Australian Accounting Standards basis.

Table 3.3: Departmental statement of changes in equity — summary of movement (Budget year 2016-17)

	Retained earnings \$'000	Asset revaluation reserve \$'000	Contributed equity/ capital \$'000	Total equity \$'000
Opening balance as at 1 July 2016				
Balance carried forward from previous period	(144,987)	20,331	222,022	97,366
Adjusted opening balance	(144,987)	20,331	222,022	97,366
Comprehensive income				
Deficit for the period	(23,000)	-	-	(23,000)
Total comprehensive income	(23,000)	-	-	(23,000)
of which:				
Attributable to the Australian Government	(23,000)	-	-	(23,000)
Transactions with owners				
Contributions by owners				
Equity injection - Appropriation	-	-	300	300
Departmental capital budget (DCB)	-	-	22,216	22,216
Sub-total transactions with owners	-	-	22,516	22,516
Estimated closing balance as at 30 June 2017	(167,987)	20,331	244,538	96,882
Closing balance attributable to the Australian Government	(167,987)	20,331	244,538	96,882

Prepared on Australian Accounting Standards basis.

Table 3.4: Budgeted departmental statement of cash flows (for the period ended 30 June)

	2015-16 Estimated actual \$'000	2016-17 Budget \$'000	2017-18 Forward estimate \$'000	2018-19 Forward estimate \$'000	2019-20 Forward estimate \$'000
OPERATING ACTIVITIES					
Cash received					
Appropriations	119,003	118,568	118,781	119,910	120,992
Sale of goods and rendering of services	7,620	7,664	7,709	7,755	7,702
Net GST received	5,924	5,774	5,667	5,745	5,731
Other	374	374	374	374	374
Total cash received	132,921	132,380	132,531	133,784	134,799
Cash used					
Employees	83,199	84,268	85,440	85,833	87,404
Suppliers	49,722	48,112	47,091	47,951	47,395
Total cash used	132,921	132,380	132,531	133,784	134,799
Net cash from operating activities	-	-	-	-	-
INVESTING ACTIVITIES					
Cash used					
Purchase of property, plant and equipment and intangibles	22,921	22,516	22,543	22,722	22,922
Total cash used	22,921	22,516	22,543	22,722	22,922
Net cash used by investing activities	(22,921)	(22,516)	(22,543)	(22,722)	(22,922)
FINANCING ACTIVITIES					
Cash received					
Contributed equity	22,921	22,516	22,543	22,722	22,922
Total cash received	22,921	22,516	22,543	22,722	22,922
Net cash from financing activities	22,921	22,516	22,543	22,722	22,922
Net increase in cash held	-	-	-	-	-
Cash and cash equivalents at the beginning of the reporting period	432	432	432	432	432
Cash and cash equivalents at the end of the reporting period	432	432	432	432	432

Prepared on Australian Accounting Standards basis.

Table 3.5: Departmental capital budget statement (for the period ended 30 June)

	2015-16 Estimated actual \$'000	2016-17 Budget \$'000	2017-18 Forward estimate \$'000	2018-19 Forward estimate \$'000	2019-20 Forward estimate \$'000
NEW CAPITAL APPROPRIATIONS					
Capital budget - Bill 1 (DCB)	22,921	22,516	22,543	22,722	22,922
Total new capital appropriations	22,921	22,816	22,543	22,722	22,922
<i>Provided for:</i>					
<i>Purchase of non-financial assets</i>	22,921	22,516	22,543	22,722	22,922
Total items	22,921	22,516	22,543	22,722	22,922
PURCHASE OF NON-FINANCIAL ASSETS					
Funded by capital appropriation - DCB ^(a)	22,921	22,516	22,543	22,722	22,922
TOTAL	22,921	22,516	22,543	22,722	22,922
RECONCILIATION OF CASH USED TO ACQUIRE ASSETS TO ASSET MOVEMENT TABLE					
Total purchases	22,921	22,516	22,543	22,722	22,922
Total cash used to acquire assets	22,921	22,516	22,543	22,722	22,922

(a) Includes purchases from current and previous years' DCB's
Prepared on Australian Accounting Standards basis.

Table 3.6: Statement of asset movements (Budget year 2016-17)

	Other property, plant and equipment \$'000	Computer software and intangibles \$'000	Total \$'000
As at 1 July 2016			
Gross book value	171,766	81,047	252,813
Accumulated depreciation/amortisation and impairment	(107,983)	(56,278)	(164,261)
Opening net book balance	63,783	24,769	88,552
Capital asset additions			
Estimated expenditure on new or replacement assets			
By purchase - appropriation ordinary annual services ^(a)	14,138	8,378	22,516
Total additions	14,138	8,378	22,516
Other movements			
Depreciation/amortisation expense	(14,901)	(8,099)	(23,000)
Disposals ^(b)			
Gross book value	(13,000)	(7,000)	(20,000)
Accumulated depreciation	13,000	7,000	20,000
Total other movements	(14,901)	(8,099)	(23,000)
As at 30 June 2017			
Gross book value	172,904	82,425	255,329
Accumulated depreciation/ amortisation and impairment	(109,884)	(57,377)	(167,261)
Closing net book balance	63,020	25,048	88,068

(a) 'Appropriation ordinary annual services' refers to funding provided through *Appropriation Bill (Parliamentary Departments) (No. 1) 2016-17* for depreciation/amortisation expenses, DCBs or other operational expenses.

(b) Net proceeds may be returned to the OPA.

Prepared on Australian Accounting Standards basis.

Table 3.7: Schedule of budgeted income and expenses administered on behalf of Government (for the period ended 30 June)

	2015-16 Estimated actual \$'000	2016-17 Budget \$'000	2017-18 Forward estimate \$'000	2018-19 Forward estimate \$'000	2019-20 Forward estimate \$'000
EXPENSES					
Suppliers	6,703	6,993	5,373	5,229	5,328
Depreciation and amortisation	31,498	33,403	33,813	34,122	34,122
Total expenses administered on behalf of Government	38,201	40,396	39,186	39,351	39,450
Net cost of services	38,201	40,396	39,186	39,351	39,450
Total comprehensive loss	38,201	40,396	39,186	39,351	39,450

Prepared on Australian Accounting Standards basis.

Table 3.8: Schedule of budgeted assets and liabilities administered on behalf of Government (as at 30 June)

	2015-16 Estimated actual \$'000	2016-17 Budget \$'000	2017-18 Forward estimate \$'000	2018-19 Forward estimate \$'000	2019-20 Forward estimate \$'000
ASSETS					
Financial assets					
Trade and other receivables	212	212	212	212	212
Total financial assets	212	212	212	212	212
Non-financial assets					
Land and buildings	2,129,224	2,207,346	2,233,427	2,234,348	2,235,751
Property, plant and equipment	114,106	115,077	115,925	116,679	117,630
Total non-financial assets	2,243,330	2,322,423	2,349,352	2,351,027	2,353,381
Total assets administered on behalf of Government	2,243,542	2,322,635	2,349,564	2,351,239	2,353,593
LIABILITIES					
Payables					
Suppliers	502	502	502	502	502
Other payables	202	202	202	202	202
Total payables	704	704	704	704	704
Total liabilities administered on behalf of Government	704	704	704	704	704
Net assets	2,242,838	2,321,931	2,348,860	2,350,535	2,352,889

Prepared on Australian Accounting Standards basis.

Table 3.9: Schedule of budgeted administered cash flows (for the period ended 30 June)

	2015-16 Estimated actual \$'000	2016-17 Budget \$'000	2017-18 Forward estimate \$'000	2018-19 Forward estimate \$'000	2019-20 Forward estimate \$'000
OPERATING ACTIVITIES					
Cash received					
Net GST received	6,104	11,991	6,739	4,103	4,180
Total cash received	6,104	11,991	6,739	4,103	4,180
Cash used					
Suppliers	12,807	18,942	11,984	9,332	9,508
Total cash used	12,807	18,942	11,984	9,332	9,508
Net cash used by operating activities	(6,703)	(6,951)	(5,245)	(5,229)	(5,328)
INVESTING ACTIVITIES					
Cash used					
Purchase of property, plant and equipment and intangibles	54,341	112,496	60,742	35,797	36,476
Total cash used	54,341	112,496	60,742	35,797	36,476
Net cash used by investing activities	(54,341)	(112,496)	(60,742)	(35,797)	(36,476)
Net decrease in cash held	(61,044)	(119,447)	(65,987)	(41,026)	(41,804)
Cash and cash equivalents at beginning of reporting period	-	-	-	-	-
Cash from Official Public Account for:					
- Appropriations	67,148	131,438	72,726	45,129	45,984
Total cash from Official Public Account	67,148	131,438	72,726	45,129	45,984
Cash to Official Public Account for:					
- Appropriations	(6,104)	(11,991)	(6,739)	(4,103)	(4,180)
Total cash to Official Public Account	(6,104)	(11,991)	(6,739)	(4,103)	(4,180)
Cash and cash equivalents at end of reporting period	-	-	-	-	-

Prepared on Australian Accounting Standards basis.

Table 3.10: Administered capital budget statement (for the period ended 30 June)

	2015-16 Estimated actual \$'000	2016-17 Budget \$'000	2017-18 Forward estimate \$'000	2018-19 Forward estimate \$'000	2019-20 Forward estimate \$'000
NEW CAPITAL APPROPRIATIONS					
Administered Assets and Liabilities	33,741	40,096	49,142	35,797	36,476
Total new capital appropriations	33,741	40,096	49,142	35,797	36,476
<i>Provided for:</i>					
<i>Purchase of non-financial assets</i>	33,741	40,096	49,142	35,797	36,476
Total items	33,741	40,096	49,142	35,797	36,476
PURCHASE OF NON-FINANCIAL ASSETS					
Funded by capital appropriations ^(a)	54,341	112,496	60,742	35,797	36,476
TOTAL	54,341	112,496	60,742	35,797	36,476
RECONCILIATION OF CASH USED TO ACQUIRE ASSETS TO ASSET MOVEMENT TABLE					
Total accrual purchases	54,341	112,496	60,742	35,797	36,476
Total cash used to acquire assets	54,341	112,496	60,742	35,797	36,476

(a) Funded by Administered Assets and Liabilities Appropriation
Prepared on Australian Accounting Standards basis.

Table 3.11: Statement of administered asset movements (Budget year 2016-17)

	Land \$'000	Buildings \$'000	Other property, plant and equipment \$'000	Heritage and cultural \$'000	Total \$'000
As at 1 July 2016					
Gross book value	50,000	2,107,938	30,568	85,428	2,273,934
Accumulated depreciation/amortisation and impairment	-	(28,714)	(1,890)	-	(30,604)
Opening net book balance	50,000	2,079,224	28,678	85,428	2,243,330
CAPITAL ASSET ADDITIONS					
Estimated expenditure on new or replacement assets					
By purchase - appropriation equity ^(a)	-	107,257	4,590	649	112,496
Total additions	-	107,257	4,590	649	112,496
Other movements					
Depreciation/amortisation expense	-	(29,135)	(4,268)	-	(33,403)
Disposals ^(b)					
Gross book value	-	-	(1,000)	-	(1,000)
Accumulated depreciation	-	-	1,000	-	1,000
Other					
Total other movements	-	(29,135)	(4,268)	-	(33,403)
As at 30 June 2017					
Gross book value	50,000	2,215,195	34,158	86,077	2,385,430
Accumulated depreciation/amortisation and impairment	-	(57,849)	(5,158)	-	(63,007)
Closing net book balance	50,000	2,157,346	29,000	86,077	2,322,423

(a) 'Appropriation equity' refers to Administered Assets and Liabilities provided through *Appropriation (Parliamentary Departments) Bill (No.1) 2016-17*

(b) Net proceeds may be returned to the OPA.

Prepared on Australian Accounting Standards basis.