

BUDGET

2015-16

Portfolio Budget Statements 2015-16
Budget Related Paper No. 1.17C

Department of Parliamentary Services

Budget Initiatives and Explanations of
Appropriations Specified by Outcomes
and Programmes by Entity

© Commonwealth of Australia 2015

ISBN 978-0-9806554-6-9

This publication is available for your use under a [Creative Commons BY Attribution 3.0 Australia](http://creativecommons.org/licenses/by/3.0/au/legalcode) licence, with the exception of the Commonwealth Coat of Arms, the Department of Parliamentary Services (DPS) logo, photographs, images, signatures and where otherwise stated. The full licence terms are available from <http://creativecommons.org/licenses/by/3.0/au/legalcode>.



Use of DPS material under a [Creative Commons BY Attribution 3.0 Australia](http://creativecommons.org/licenses/by/3.0/au/legalcode) licence requires you to attribute the work (but not in any way that suggests that DPS endorses you or your use of the work).

Department of Parliamentary Services material used 'as supplied'

Provided you have not modified or transformed the DPS material in any way including, for example, by changing the DPS text; calculating percentage changes; graphing or charting data; or deriving new statistics from published DPS statistics – then DPS prefers the following attribution:

Source: Department of Parliamentary Services

Derivative material

If you have modified or transformed DPS material, or derived new material from those of DPS in any way, then DPS prefers the following attribution:

Based on Department of Parliamentary Services data

Use of the Coat of Arms

The terms under which the Coat of Arms can be used are set out on the It's an Honour website (see www.itsanhonour.gov.au)

Other uses

Inquiries regarding this licence and any other use of this document are welcome at:

Mr Ben Wright
Chief Finance Officer
Department of Parliamentary Services
(02) 6277 8954



PARLIAMENT OF AUSTRALIA
DEPARTMENT OF PARLIAMENTARY SERVICES

The Hon Bronwyn Bishop
Speaker of the House of Representatives
Parliament House
CANBERRA ACT 2600

Senator the Hon Stephen Parry
President of the Senate
Parliament House
CANBERRA ACT 2600

7 May 2015

Dear Madam Speaker and Mr President

I hereby submit Portfolio Budget Statements in support of the 2015-16 Budget for the Department of Parliamentary Services.

These statements have been developed, and are submitted to the Parliament, as a statement on the outcomes for the department.

I present these statements to provide accountability to the Parliament and, through it, the public.

Yours sincerely

Dianne Heriot
Acting Secretary

Abbreviations and conventions

The following notation may be used:

NEC/nec	not elsewhere classified
-	nil
..	not zero, but rounded to zero
na	not applicable (unless otherwise specified)
nfp	not for publication
\$m	\$ million
\$b	\$ billion

Figures in tables and in the text may be rounded. Figures in text are generally rounded to one decimal place, whereas figures in tables are generally rounded to the nearest thousand. Discrepancies in tables between totals and sums of components are due to rounding.

Enquiries

Should you have any enquiries regarding this publication please contact Ben Wright, Chief Finance Officer, Department of Parliamentary Services on (02) 6277 8954.

A copy of this document can be located on the Australian Government Budget website at: www.budget.gov.au.

**USER GUIDE
TO THE
PORTFOLIO BUDGET STATEMENTS**

USER GUIDE

The purpose of the 2015-16 Portfolio Budget Statements (PB Statements) is to inform Senators and Members of Parliament of the proposed allocation of resources to outcomes by Commonwealth entities. Entities receive resources from the annual appropriations acts, special appropriations (including standing appropriations and special accounts), and revenue from other sources.

A key role of the PB Statements is to facilitate the understanding of proposed annual appropriations in *Appropriation (Parliamentary Departments) Bill (No. 1) 2015-16*. In this sense the PB Statements are Budget related papers and are declared by the Appropriation Acts to be 'relevant documents' to the interpretation of the Acts according to section 15AB of the *Acts Interpretation Act 1901*.

The PB Statements provide information, explanation and justification to enable Parliament to understand the purpose of each outcome proposed in the Bills.

As required under section 12 of the *Charter of Budget Honesty Act 1998*, non-general government sector entities are not consolidated into the Commonwealth general government sector fiscal estimates and accordingly, these entities are not reported in the PB Statements.

CONTENTS

Departmental Overview	3
Section 1: Entity overview and resources	9
1.1 Strategic direction statement	9
1.2 Entity resource statement	10
1.3 Budget measures.....	11
Section 2: Outcomes and planned performance	12
2.1 Outcomes and performance information	14
Section 3: Explanatory tables and budgeted financial statements	18
3.1 Explanatory tables	18
3.2 Budgeted financial statements	19

DEPARTMENTAL OVERVIEW

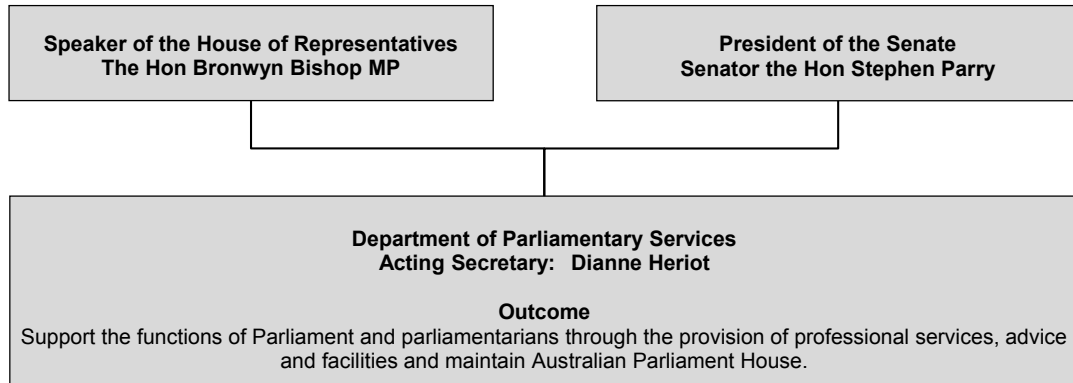
DEPARTMENTAL OVERVIEW

The Department of Parliamentary Services (DPS) supports the functions of the Australian Parliament and the work of parliamentarians through the provision of professional services, advice and facilities, the ongoing maintenance of Australian Parliament House; and makes the building, and the important activity that takes place within it, accessible. DPS reports to the Presiding Officers of the Parliament (the Speaker of the House of Representatives and the President of the Senate).

DPS services comprise:

- library and research;
- parliamentary broadcasting and recording;
- a full range of information and communication technology (ICT) services;
- ICT and building security;
- extensive visitor services, including tours, retail and information at Parliament House and online;
- asset management, including building and landscape planning, upgrading and maintenance;
- health and recreation and hospitality services;
- the Parliament House art collection and historic memorials collection management; and
- corporate services to DPS.

Figure 1: Department of Parliamentary Services reporting structure and outcome



DEPARTMENTAL RESOURCES

Table 1 shows the total new resources provided to DPS in the 2015-16 budget year.

Table 1: Department Resources 2015-16

	Appropriation (Parliamentary Departments) Bill (No. 1) (\$m)	Receipts (\$m)	Total (\$m)
Department of Parliamentary Services			
Administered appropriations	40.444	-	40.444
Departmental appropriations	141.924	8.259	150.183
Total:			190.627
	Resources available for Department of Parliamentary Services:		190.627

Department of Parliamentary Services

Entity resources and planned performance

DEPARTMENT OF PARLIAMENTARY SERVICES

Section 1: Entity overview and resources

1.1 STRATEGIC DIRECTION STATEMENT

The Department of Parliamentary Services (DPS) supports the functions of the Australian Parliament and the work of parliamentarians through the provision of professional services, advice and facilities, the ongoing maintenance of Australian Parliament House; and makes the building, and the important activity that takes place within it, accessible. DPS reports to the Presiding Officers of the Parliament (the Speaker of the House of Representatives and the President of the Senate).

DPS continues to enhance its framework, policies and practices to improve the delivery of services to the occupants of, and visitors to, Parliament House.

Areas of priority for the Department are to:

- support the functions of Parliament and the work of parliamentarians;
- strategically plan for and maintain and enhance Parliament House;
- implement a range of security related enhancements to the physical and personnel security arrangements of Parliament House;
- provide information and communication technologies that support the Parliament and the work of parliamentarians, and connect with the wider community;
- enable physical and virtual access to the Parliament to engage with and meet the needs of a diverse range of building occupants, visitors and the community;
- ensure the Parliament's assets are cared for and respected and its heritage value is maintained for future generations; and
- establish a robust management and governance framework (including policies and guidelines) and improve the skills in key functions such as procurement and contract management.

1.2 ENTITY RESOURCE STATEMENT

Table 1.1 shows the total resources from all sources. The table summarises how resources will be applied by outcome and by administered and departmental classification.

Table 1.1: Department of Parliamentary Services resource statement — Budget estimates for 2015-16 as at Budget May 2015

	<i>Actual Available Appropriation 2014-15</i> \$'000	Estimate of prior year amounts available in 2015-16 \$'000	Proposed at 2015-16 Budget \$'000	Total 2015-16 estimate \$'000
Ordinary annual services ^(a)				
Departmental appropriation				
Prior year appropriations ^(b)	14,226	10,726	-	10,726
Departmental appropriation ^(c)	144,758	-	141,924	141,924
s74 Retained revenue receipts ^(d)	8,007	-	8,259	8,259
Total	166,991	10,726	150,183	160,909
Administered expenses				
Outcome 1	4,400	-	6,703	6,703
Total	4,400	-	6,703	6,703
Total ordinary annual services [A]	171,391	10,726	156,886	167,612
Administered non-operating				
Prior year appropriations ^(b)	12,426	11,126	-	11,126
Administered assets and liabilities ^(e)	122,212	-	33,741	33,741
Total	134,638	11,126	33,741	44,867
Total other services [B]	134,638	11,126	33,741	44,867
Total available annual appropriations [A+B]	306,029	21,852	190,627	212,479

(a) *Appropriation (Parliamentary Departments) Bill (No. 1) 2015-16.*

(b) Estimated adjusted balance carried forward from previous year.

(c) Includes an amount of \$22.921m for the Departmental Capital Budget (refer to Table 3.2.5 for further details). For accounting purposes this amount has been designated as 'contributions by owners'.

(d) Estimated Retained revenue receipts under section 74 of the PGPA Act.

(e) *Appropriation (Parliamentary Departments) Bill (No. 1) 2015-16* (refer to table 3.2.10 for further details). For accounting purposes this amount has been designated as 'contributions by owners'.

Reader note: All figures are GST exclusive.

Third party payments from and on behalf of other entities

	2014-15 \$'000	2015-16 \$'000
Payments made on behalf of other entities (disclosed in the respective Entity resource statement)		
Department of Finance		
<i>Parliamentary Entitlements Act 1990</i>	16,645	24,334
<i>Administered Annual Appropriation Act (No. 1)</i>	400	225
Total Payments made on behalf of other agencies	17,045	24,559

1.3 BUDGET MEASURES

Budget measures relating to DPS are detailed in Budget Paper No.2 and are summarised below.

Table 1.2: Entity 2015-16 Budget measures

Measures announced since the 2014-15 Mid-Year Economic and Fiscal Outlook (MYEFO)^(a)

	Programme	2014-15 \$'000	2015-16 \$'000	2016-17 \$'000	2017-18 \$'000	2018-19 \$'000
Expense measures						
Parliamentary Departments						
- additional funding						
	1	-	876	884	834	856
		-	876	884	834	856
Total						
Total expense measures						
		-	876	884	834	856
		-	876	884	834	856

(a) A portion of the budget measure listed in Table 1.2 is being funded from the contingency reserve.

SECTION 2: OUTCOMES AND PLANNED PERFORMANCE

2.1 OUTCOMES AND PERFORMANCE INFORMATION

Outcomes are the intended results, impacts or consequences of actions by the Parliament for the Australian community. Programmes are the primary vehicle by which Parliamentary Departments achieve the intended results of their outcome statements. Parliamentary Departments are required to identify the programmes which contribute to parliamentary outcomes over the Budget and forward years.

The outcome for DPS is described below together with its related programmes, specifying the performance indicators and targets used to assess and monitor the performance of DPS in achieving its outcome.

Change to Outcome

DPS has amended its Outcome for the 2015-16 Budget. The previous Outcome:

Occupants of Parliament House are supported by integrated services and facilities, Parliament functions effectively and its work and building are accessible to the public

Has been replaced with:

Outcome: Support the functions of Parliament and parliamentarians through the provision of professional services, advice and facilities and maintain Australian Parliament House

Outcome strategy

The Department of Parliamentary Services will deliver services and advice to support the functions of Parliament and the work of parliamentarians and other building occupants. The Department will protect the integrity of the building and its contents through Heritage and Conservation Management strategies. The Department will offer high-quality and innovative programmes to improve the visitor experience, making Parliament House a destination of choice. The Department will also implement a range of physical, personnel and cyber security upgrades to support the ongoing operation of the Parliament in a safe and secure manner.

Outcome expense statement

Table 2.1 provides an overview of the total expenses for the outcome by programme.

Table 2.1: Budgeted expenses for Outcome 1

Support the functions of Parliament and parliamentarians through the provision of professional services, advice and facilities and maintain Australian Parliament House	2014-15 Estimated actual expenses \$'000	2015-16 Estimated expenses \$'000
Programme 1: Parliamentary Services		
Departmental expenses		
Departmental appropriation ^(a)	128,526	127,262
Expenses not requiring appropriation in the Budget year ^(b)	25,140	25,361
Total for programme 1	153,666	152,623
Programme 2: Parliament House Works Programme		
Administered expenses		
Ordinary annual services (Appropriation (Parliamentary Departments) Bill (No. 1))	4,400	6,703
Expenses not requiring appropriation in the Budget year ^(b)	29,500	31,498
Total for programme 2	33,900	38,201
Outcome 1 Totals by appropriation type		
Administered expenses		
Ordinary annual services (Appropriation (Parliamentary Departments) Bill (No. 1))	4,400	6,703
Departmental expenses		
Departmental appropriation ^(a)	128,526	127,262
Expenses not requiring appropriation in the Budget year ^(b)	54,640	56,859
Total expenses for Outcome 1	187,566	190,824
	2014-15	2015-16
Average staffing level (number)	743	739

(a) Departmental Appropriation combines 'Ordinary annual services (*Appropriation (Parliamentary Departments) Bill (No. 1) 2015-16*)' and 'Revenue from independent sources (s 74).

(b) Expenses not requiring appropriation in the Budget year are made up of depreciation and amortisation expenses, write-downs and impairment of assets, losses from sale of assets and audit fees.

Note: Departmental appropriation splits and totals are indicative estimates and may change in the course of the budget year as priorities change.

Contributions to Outcome 1

Programme 1: Parliamentary Services

Programme objective

- Provide a range of research, information and reporting services to support the Parliament and the work of parliamentarians, and engage the community;
- Provide services to building occupants and electorate offices to enable them to conduct their work; and
- Provide services and facilities for visitors to Parliament House.

Programme 1 Expenses

	2014-15 Estimated actual \$'000	2015-16 Budget \$'000	2016-17 Forward estimate \$'000	2017-18 Forward estimate \$'000	2018-19 Forward estimate \$'000
Annual departmental expenses:					
Parliamentary Services	128,526	127,262	126,985	127,376	128,693
Expenses not requiring appropriation in the Budget year ^(a)	25,140	25,361	25,698	25,813	25,813
Total programme expenses	153,666	152,623	152,683	153,189	154,506

(a) Expenses not requiring appropriation in the Budget year are made up of depreciation and amortisation expenses, write-downs and impairment of assets, losses from sale of assets and audit fees.

Programme 1 Key Performance Indicators

Number and type of visitor interactions

Target: Equivalent or greater to same period last year

Measures: Number of visitors

Number of virtual visitors

Number of visitors for DPS educational tours

Number of participants to DPS organised tours and events

Programme 1 Key Performance Indicators (continued)

Visitor satisfaction with Australian Parliament House Experience

Target:	85% satisfaction
Measures:	% of visitor feedback indicating their visit met or exceeded expectations
	% of virtual visitor feedback indicating their visit met or exceeded expectations
	% of school/education visitor feedback indicating their visit met expectations and was relevant to classroom learning/curriculum
	% of participants attending DPS tours and events indicating their visit met or exceeded expectations

Building occupant satisfaction with timeliness and quality of DPS services

Target:	75% satisfaction
Measures:	% of building occupant feedback indicating a satisfied or neutral rating with timeliness and quality of DPS services (by DPS service category)
	% of Parliamentarian satisfaction with Art Collection Services

Parliamentary Library Service KPIs are achieved

Target:	90%
Measures:	% of Library Service KPIs set out in the annual Library Resource Agreement that are achieved

ICT Service Standards are achieved

Target:	90%
Measures	% of ICT Standards outlined in the ICT SLA that are achieved

Hansard Service KPIs are achieved

Target:	As listed below
Measures	% of Individual draft speeches delivered within two hours of speech finishing (85%)
	% of electronic proof Hansard reports delivered within agreed timeframes (95%)
	% of committee transcripts delivered within agreed timeframes (95%)

The key performance indicators (KPI) for programme 1 have been updated for the 2015-16 Budget.

Programme 2: Parliament House Works Programme

Programme objective

- Strategically plan to maintain and upgrade Parliament House;
- Maintain Parliament House as a safe and accessible workplace and public building;
- Plan, develop and deliver into service an ongoing building works programme; and
- Plan and deliver physical security upgrades to Parliament House.

Programme 2 Expenses

	2014-15 Estimated actual \$'000	2015-16 Budget \$'000	2016-17 Forward estimate \$'000	2017-18 Forward estimate \$'000	2018-19 Forward estimate \$'000
Annual administered expenses:					
Parliament House Works Programme	4,400	6,703	7,028	5,405	5,265
Expenses not requiring appropriation in the Budget year ^(a)	29,500	31,498	33,403	33,813	34,122
Total programme expenses	33,900	38,201	40,431	39,218	39,387

(a) Expenses not requiring appropriation in the Budget year are made up of depreciation and amortisation expenses, write-downs and impairment of assets, losses from sale of assets and audit fees.

Programme 2 Key Performance Indicators

Design Integrity Rating

Target: 90%

Measures: % of significant building changes (not like-for-like) resulting in an unchanged or positive impact to the Design Integrity of the Building

Building Condition Rating

Target: 90%

Measures: % of building areas reviewed that are assessed as being in fair or better condition

Programme 2 Key Performance Indicators (continued)	
<i>Landscape Condition Rating</i>	
Target:	90%
Measures:	% of landscaped areas reviewed that are assessed as being in fair or better condition
<i>Engineering Systems Rating</i>	
Target:	90%
Measures:	% of critical engineering systems reviewed that are assessed as being in fair or better condition

The key performance indicators (KPI) for programme 2 have been updated for the 2015-16 Budget.

Section 3: Explanatory tables and budgeted financial statements

Section 3 presents explanatory tables and budgeted financial statements which provide a comprehensive snapshot of entity finances for the 2015-16 budget year. It explains how budget plans are incorporated into the financial statements and provides further details of the reconciliation between appropriations and programme expenses, movements in administered funds, special accounts and indigenous expenditure.

3.1 EXPLANATORY TABLES

3.1.1 Movement of administered funds between years

Administered funds can be provided for a specified period, for example under annual Appropriation Acts. Funds not used in the specified period with the agreement of the Finance Minister may be moved to a future year.

DPS currently has no movements of administered funds between years.

3.1.2 Special accounts

Special accounts provide a means to set aside and record amounts used for specified purposes. Special accounts can be created by a Finance Minister's determination under section 78 of the PGPA Act or under separate enabling legislation (section 80 of the PGPA Act refers).

DPS does not currently manage any special accounts.

3.1.3 Australian Government Indigenous expenditure

DPS has no specific Indigenous expenditure.

3.2 BUDGETED FINANCIAL STATEMENTS

3.2.1 Differences in entity resourcing and financial statements

The Resource Statement (Table 1.1) provides a consolidated view of resources available to DPS in 2015-16, appropriated in both the budget year and prior years, where they remain unspent and available. This table is prepared on a cash basis; however, this contrasts to the budgeted financial statements (which are presented in the tables that follow), which are prepared in accordance with Australian Accounting Standards.

3.2.2 Analysis of budgeted financial statements

Comprehensive Income Statement

When compared with estimates disclosed in the 2014-15 Portfolio Additional Estimates Statements (PAES), departmental revenue from Government has increased by \$0.7 million in 2015-16 and approximately \$0.5 million per annum across the Forward Estimates. This increase is due to the additional \$1.1 million in operating funding allocated in the 2015-16 budget with a similar amount allocated each year across the Forward Estimates. The additional funding is partially offset by a reduction in funding due to changes in price parameters.

The additional revenue from Government has been allocated to both supplier and employee expenses and DPS is forecasting a balanced income statement result in 2015-16 and across the Forward Estimates (excluding depreciation and amortisation, for which the department is not appropriated).

The departmental depreciation and amortisation estimate has been increased by \$3.3 million per annum in line with actual achievement.

The administered suppliers estimate for 2015-16 has increased by \$3.3 million and approximately \$4.0 million per annum across the Forward Estimates for operating costs associated with the capital works programme.

Balance Sheet

The departmental estimated total assets and equity has decreased by \$5.7 million in 2015-16 when compared with the 2014-15 Portfolio Additional Estimates Statements principally due to the higher budgeted depreciation expense.

The administered estimated total assets has increased by \$22.7m in 2015-16 when compared with the 2014-15 Portfolio Additional Estimates Statements principally due to the additional administered capital funding and update of depreciation expenses.

DPS Budget Statements

Capital Budget

An additional \$19.7 million was allocated to the administered capital budget as part of the 2015-16 budget.

DPS was allocated an additional \$1.3 million in 2015-16 and \$0.7 million in 2016-17 for the departmental capital budget.

3.2.3 Budgeted financial statements tables

Table 3.2.1: Comprehensive income statement (showing net cost of services) for the period ended 30 June

	2014-15 Estimated actual \$'000	2015-16 Budget \$'000	2016-17 Forward estimate \$'000	2017-18 Forward estimate \$'000	2018-19 Forward estimate \$'000
EXPENSES					
Employee benefits	81,366	80,212	80,110	80,118	80,243
Suppliers	47,300	47,190	47,015	47,398	48,590
Depreciation and amortisation	25,000	25,221	25,558	25,673	25,673
Total expenses	153,666	152,623	152,683	153,189	154,506
LESS:					
OWN-SOURCE INCOME					
Own-source revenue					
Sale of goods and rendering of services	5,875	5,875	5,875	5,875	5,875
Rental income	1,758	2,010	2,050	2,091	2,133
Other	374	374	374	374	374
Total own-source revenue	8,007	8,259	8,299	8,340	8,382
Gains					
Other	140	140	140	140	140
Total gains	140	140	140	140	140
Total own-source income	8,147	8,399	8,439	8,480	8,522
Net cost of/(contribution by) services	145,519	144,224	144,244	144,709	145,984
Revenue from Government	120,519	119,003	118,686	119,036	120,311
Surplus/(deficit) attributable to the Australian Government	(25,000)	(25,221)	(25,558)	(25,673)	(25,673)
Total comprehensive income/(loss)	(25,000)	(25,221)	(25,558)	(25,673)	(25,673)
Total comprehensive income/(loss) attributable to the Australian Government	(25,000)	(25,221)	(25,558)	(25,673)	(25,673)

Note: Impact of net cash appropriation arrangements

	2014-15 \$'000	2015-16 \$'000	2016-17 \$'000	2017-18 \$'000	2018-19 \$'000
Total comprehensive income/(loss) excluding depreciation/amortisation expenses previously funded through revenue appropriations	-	-	-	-	-
less depreciation/amortisation expenses previously funded through revenue appropriations	(25,000)	(25,221)	(25,558)	(25,673)	(25,673)
Total comprehensive income/(loss) - as per the statement of comprehensive income	(25,000)	(25,221)	(25,558)	(25,673)	(25,673)

Prepared on Australian Accounting Standards basis.

Table 3.2.2: Budgeted departmental balance sheet (as at 30 June)

	2014-15 Estimated actual \$'000	2015-16 Budget \$'000	2016-17 Forward estimate \$'000	2017-18 Forward estimate \$'000	2018-19 Forward estimate \$'000
ASSETS					
Financial assets					
Cash and cash equivalents	547	547	547	547	547
Trade and other receivables	12,523	12,523	12,523	12,523	12,523
Total financial assets	13,070	13,070	13,070	13,070	13,070
Non-financial assets					
Property, plant and equipment	66,481	65,198	62,879	59,796	58,013
Intangibles	26,739	25,722	24,809	24,896	23,884
Inventories	173	173	173	173	173
Other non-financial assets	2,927	2,927	2,927	2,927	2,927
Total non-financial assets	96,320	94,020	90,788	87,792	84,997
Total assets	109,390	107,090	103,858	100,862	98,067
LIABILITIES					
Payables					
Suppliers	3,403	3,403	3,403	3,403	3,403
Other payables	85	85	85	85	85
Total payables	3,488	3,488	3,488	3,488	3,488
Provisions					
Employee provisions	24,050	24,050	24,050	24,050	24,050
Total provisions	24,050	24,050	24,050	24,050	24,050
Total liabilities	27,538	27,538	27,538	27,538	27,538
Net assets	81,852	79,552	76,320	73,324	70,529
EQUITY*					
Parent entity interest					
Contributed equity	199,101	222,022	244,348	267,025	289,903
Reserves	18,083	18,083	18,083	18,083	18,083
Retained surplus (accumulated deficit)	(135,332)	(160,553)	(186,111)	(211,784)	(237,457)
Total parent entity interest	81,852	79,552	76,320	73,324	70,529
Total Equity	81,852	79,552	76,320	73,324	70,529

*'Equity' is the residual interest in assets after deduction of liabilities.
Prepared on Australian Accounting Standards basis.

Table 3.2.3: Departmental statement of changes in equity — summary of movement (Budget year 2015-16)

	Retained earnings \$'000	Asset revaluation reserve \$'000	Contributed equity/ capital \$'000	Total equity \$'000
Opening balance as at 1 July 2015				
Balance carried forward from previous period	(135,332)	18,083	199,101	81,852
Adjusted opening balance	(135,332)	18,083	199,101	81,852
Comprehensive income				
Surplus/(deficit) for the period	(25,221)	-	-	(25,221)
Total comprehensive income	(25,221)	-	-	(25,221)
of which:				
Attributable to the Australian Government	(25,221)	-	-	(25,221)
Transactions with owners				
Contributions by owners				
Departmental Capital Budget (DCB)	-	-	22,921	22,921
Sub-total transactions with owners	-	-	22,921	22,921
Estimated closing balance as at 30 June 2016	(160,553)	18,083	222,022	79,552
Closing balance attributable to the Australian Government	(160,553)	18,083	222,022	79,552

Prepared on Australian Accounting Standards basis.

**Table 3.2.4: Budgeted departmental statement of cash flows
(for the period ended 30 June)**

	2014-15 Estimated actual \$'000	2015-16 Budget \$'000	2016-17 Forward estimate \$'000	2017-18 Forward estimate \$'000	2018-19 Forward estimate \$'000
OPERATING ACTIVITIES					
Cash received					
Appropriations	124,019	119,003	118,686	119,036	120,309
Sale of goods and rendering of services	8,396	8,674	8,718	8,763	8,809
Net GST received	6,727	6,209	6,128	6,197	6,332
Other	374	374	374	374	374
Total cash received	139,516	134,260	133,906	134,370	135,824
Cash used					
Employees	81,366	80,212	80,110	80,118	80,243
Suppliers	54,650	54,048	53,796	54,252	55,581
Total cash used	136,016	134,260	133,906	134,370	135,824
Net cash from/(used by) operating activities	3,500	-	-	-	-
INVESTING ACTIVITIES					
Cash used					
Purchase of property, plant and equipment	27,739	22,921	22,326	22,677	22,878
Total cash used	27,739	22,921	22,326	22,677	22,878
Net cash from/(used by) investing activities	(27,739)	(22,921)	(22,326)	(22,677)	(22,878)
FINANCING ACTIVITIES					
Cash received					
Contributed equity	24,239	22,921	22,326	22,677	22,878
Total cash received	24,239	22,921	22,326	22,677	22,878
Net cash from/(used by) financing activities	24,239	22,921	22,326	22,677	22,878
Net increase/(decrease) in cash held	-	-	-	-	-
Cash and cash equivalents at the beginning of the reporting period	547	547	547	547	547
Cash and cash equivalents at the end of the reporting period	547	547	547	547	547

Prepared on Australian Accounting Standards basis

Table 3.2.5: Departmental capital budget statement (for the period ended 30 June)

	2014-15 Estimated actual \$'000	2015-16 Budget \$'000	2016-17 Forward estimate \$'000	2017-18 Forward estimate \$'000	2018-19 Forward estimate \$'000
NEW CAPITAL APPROPRIATIONS					
Capital budget - Bill 1 (DCB)	24,239	22,921	22,326	22,677	22,878
Total new capital appropriations	24,239	22,921	22,326	22,677	22,878
<i>Provided for:</i>					
<i>Purchase of non-financial assets</i>	24,239	22,921	22,326	22,677	22,878
Total Items	24,239	22,921	22,326	22,677	22,878
PURCHASE OF NON-FINANCIAL ASSETS					
Funded by capital appropriation - DCB ^(a)	27,739	22,921	22,326	22,677	22,878
TOTAL	27,739	22,921	22,326	22,677	22,878
RECONCILIATION OF CASH USED TO ACQUIRE ASSETS TO ASSET MOVEMENT TABLE					
Total purchases	27,739	22,921	22,326	22,677	22,878
Total cash used to acquire assets	27,739	22,921	22,326	22,677	22,878

(a) Includes purchases from current and previous years' Departmental Capital Budgets (DCBs). Prepared on Australian Accounting Standards basis.

Table 3.2.6: Statement of asset movements (Budget year 2015-16)

	Other property, plant and equipment \$'000	Computer software and intangibles \$'000	Total \$'000
As at 1 July 2015			
Gross book value	280,046	74,604	354,650
Accumulated depreciation/ amortisation	(213,565)	(47,865)	(261,430)
Opening net book balance	66,481	26,739	93,220
Capital asset additions			
Estimated expenditure on new or replacement assets			
By purchase - appropriation equity ^(a)	14,938	7,983	22,921
Total additions	14,938	7,983	22,921
Other movements			
Depreciation/amortisation expense	(16,221)	(9,000)	(25,221)
Disposals ^(b)			
Gross book value	(13,000)	(7,000)	(20,000)
Accumulated depreciation	13,000	7,000	20,000
Other			
Total other movements	(16,221)	(9,000)	(25,221)
As at 30 June 2016			
Gross book value	281,984	75,587	357,571
Accumulated depreciation/ amortisation	(216,786)	(49,865)	(266,651)
Closing net book balance	65,198	25,722	90,920

(a) 'Appropriation equity' refers to equity injections appropriations provided through *Appropriation Bill (Parliamentary Departments) (No. 1) 2015-16*.

(b) Net proceeds may be returned to the OPA.

Prepared on Australian Accounting Standards basis.

Table 3.2.7: Schedule of budgeted income and expenses administered on behalf of Parliament (for the period ended 30 June)

	2014-15 Estimated actual \$'000	2015-16 Budget \$'000	2016-17 Forward estimate \$'000	2017-18 Forward estimate \$'000	2018-19 Forward estimate \$'000
EXPENSES					
Suppliers	4,400	6,703	7,028	5,405	5,265
Depreciation and amortisation	29,500	31,498	33,403	33,813	34,122
Total expenses administered on behalf of Government	33,900	38,201	40,431	39,218	39,387
Net cost of services	33,900	38,201	40,431	39,218	39,387
Deficit	(33,900)	(33,900)	(33,900)	(33,900)	(33,900)
Total comprehensive income/(loss)	(33,900)	(33,900)	(33,900)	(33,900)	(33,900)

Prepared on Australian Accounting Standards basis.

Table 3.2.8: Schedule of budgeted assets and liabilities administered on behalf of Parliament (as at 30 June)

	2014-15 Estimated actual \$'000	2015-16 Budget \$'000	2016-17 Forward estimate \$'000	2017-18 Forward estimate \$'000	2018-19 Forward estimate \$'000
ASSETS					
Financial assets					
Trade and other receivables	404	404	404	404	404
Total financial assets	404	404	404	404	404
Non-financial assets					
Land and buildings	2,185,600	2,165,027	2,169,922	2,174,363	2,179,566
Property, plant and equipment	134,312	157,328	154,724	152,092	148,810
Total non-financial assets	2,319,912	2,322,355	2,324,646	2,326,455	2,328,376
Total assets administered on behalf of Government	2,320,316	2,322,759	2,325,050	2,326,859	2,328,780
LIABILITIES					
Payables					
Suppliers	764	764	764	764	764
Other payables	392	392	392	392	392
Total payables	1,156	1,156	1,156	1,156	1,156
Total liabilities administered on behalf of Government	1,156	1,156	1,156	1,156	1,156
Net assets/(liabilities)	2,319,160	2,321,603	2,323,894	2,325,703	2,327,624

Prepared on Australian Accounting Standards basis.

**Table 3.2.9: Schedule of budgeted administered cash flows
(for the period ended 30 June)**

	2014-15 Estimated actual \$'000	2015-16 Budget \$'000	2016-17 Forward estimate \$'000	2017-18 Forward estimate \$'000	2018-19 Forward estimate \$'000
OPERATING ACTIVITIES					
Cash received					
Net GST received	12,791	4,064	4,272	4,103	4,131
Total cash received	12,791	4,064	4,272	4,103	4,131
Cash used					
Suppliers	17,191	10,767	11,300	9,508	9,396
Total cash used	17,191	10,767	11,300	9,508	9,396
Net cash from/(used by) operating activities	(4,400)	(6,703)	(7,028)	(5,405)	(5,265)
INVESTING ACTIVITIES					
Cash used					
Purchase of property, plant and equipment	123,512	33,941	35,694	35,622	36,043
Total cash used	123,512	33,941	35,694	35,622	36,043
Net cash from/(used by) investing activities	(123,512)	(33,941)	(35,694)	(35,622)	(36,043)
Net increase/(decrease) in cash held	(127,912)	(40,644)	(42,722)	(41,027)	(41,308)
Cash and cash equivalents at beginning of reporting period	-	-	-	-	-
Cash from Official Public Account for:					
- Appropriations	140,703	44,708	46,994	45,130	45,439
Total cash from Official Public Account	140,703	44,708	46,994	45,130	45,439
Cash to Official Public Account for:					
- Appropriations	(12,791)	(4,064)	(4,272)	(4,103)	(4,131)
Total cash to Official Public Account	(12,791)	(4,064)	(4,272)	(4,103)	(4,131)
Cash and cash equivalents at end of reporting period	-	-	-	-	-

Prepared on Australian Accounting Standards basis.

Note: The department doubts its capacity to expend approximately \$100m of the allocated funding indicated in table 3.2.9 for 2014-15.

Table 3.2.10: Administered capital budget statement (for the period ended 30 June)

	2014-15 Estimated actual \$'000	2015-16 Budget \$'000	2016-17 Forward estimate \$'000	2017-18 Forward estimate \$'000	2018-19 Forward estimate \$'000
NEW CAPITAL APPROPRIATIONS					
Administered Assets and Liabilities	122,212	33,741	35,694	35,622	36,043
Total new capital appropriations	122,212	33,741	35,694	35,622	36,043
<i>Provided for:</i>					
<i>Purchase of non-financial assets</i>	122,212	33,741	35,694	35,622	36,043
Total items	122,212	33,741	35,694	35,622	36,043
PURCHASE OF NON-FINANCIAL ASSETS					
Funded by capital appropriation ^(a)	123,512	33,941	35,694	35,622	36,043
TOTAL	123,512	33,941	35,694	35,622	36,043
RECONCILIATION OF CASH USED TO ACQUIRE ASSETS TO ASSET MOVEMENT TABLE					
Total accrual purchases	123,512	33,941	35,694	35,622	36,043
Total cash used to acquire assets	123,512	33,941	35,694	35,622	36,043

(a) Funded by Administered Assets and Liabilities Appropriation

Table 3.2.11: Statement of administered asset movements (Budget year 2015-16)

	Land \$'000	Buildings \$'000	Other property, plant and equipment \$'000	Heritage and cultural \$'000	Total \$'000
As at 1 July 2015					
Gross book value	50,000	2,871,024	67,889	85,158	3,074,071
Accumulated depreciation/amortisation	-	(735,424)	(18,735)	-	(754,159)
Opening net book balance	50,000	2,135,600	49,154	85,158	2,319,912
CAPITAL ASSET ADDITIONS					
Estimated expenditure on new or replacement assets					
By purchase - appropriation equity ^(a)	-	8,057	25,234	650	33,941
Total additions	-	8,057	25,234	650	33,941
Other movements					
Depreciation/amortisation expense	-	(28,630)	(2,868)	-	(31,498)
Disposals ^(b)	-	-	(1,000)	-	(1,000)
Gross book value	-	-	(1,000)	-	(1,000)
Accumulated depreciation	-	-	1,000	-	1,000
Total other movements	-	(28,630)	(2,868)	-	(31,498)
As at 30 June 2016					
Gross book value	50,000	2,879,081	92,123	85,808	3,107,012
Accumulated depreciation/amortisation	-	(764,054)	(20,603)	-	(784,657)
Closing net book balance	50,000	2,115,027	71,520	85,808	2,322,355

(a) 'Appropriation equity' refers to Administered Assets and Liabilities provided through *Appropriation (Parliamentary Departments) Bill (No. 1) 2015-16*.

(b) Net proceeds may be returned to the OPA.

Prepared on Australian Accounting Standards basis.

GLOSSARY

DCB	Departmental Capital Budget
DPS	Department of Parliamentary Services
GST	Goods and Services Tax
ICT	Information and Communications Technology
IT	Information Technology
OPA	Official Public Account
PAES	Portfolio Additional Estimates Statements
PGPA Act	<i>Public Governance, Performance and Accountability Act 2013</i>