



Budget

October 2022-23

PORTFOLIO BUDGET STATEMENTS 2022-23
BUDGET RELATED PAPER NO. 1.14A

**DEPARTMENT OF THE
HOUSE OF REPRESENTATIVES**

Budget Initiatives and Explanations of Appropriations
Specified by Outcomes and Programs by Entity

2022–23 OCTOBER BUDGET PAPERS

Budget Speech

No. 1 Budget Strategy and Outlook October 2022–23

Contains information on the economic and fiscal outlook, together with information on the fiscal strategy.

No. 2 Budget Measures October 2022–23

Provides a comprehensive statement on the budget payment and receipt measures in the 2022–23 October Budget.

No. 3 Federal Financial Relations October 2022–23

Provides information on the Australian Government's financial relations with the states, territories and local government.

No. 4 Agency Resourcing October 2022–23

Contains information on resourcing for Australian Government agencies (including special appropriations, special accounts and a summary of agency resourcing).

2022–23 OCTOBER BUDGET RELATED PAPERS

No. 1 Portfolio Budget Statements

Detailed information on the resources available and the planned performance of each Australian Government entity for 2022–23.

Department of the House of Representatives acknowledges the Traditional Custodians of country throughout Australia and their connections to land, sea and community. We pay our respect to their Elders past and present and extend that respect to all Aboriginal and Torres Strait Islander peoples today.

PORTFOLIO BUDGET STATEMENTS 2022–23
BUDGET RELATED PAPER NO. 1.14A

**DEPARTMENT OF THE HOUSE OF
REPRESENTATIVES**

Budget Initiatives and Explanations of Appropriations
Specified by Outcomes and Programs by Entity

© Commonwealth of Australia 2022

ISSN 978-1-76092-435-5

This publication is available for your use under a [Creative Commons BY Attribution 3.0 Australia](http://creativecommons.org/licenses/by/3.0/au/legalcode) licence, with the exception of the Commonwealth Coat of Arms, the Department of the House of Representatives logo, photographs, images, signatures and where otherwise stated. The full licence terms are available from <http://creativecommons.org/licenses/by/3.0/au/legalcode>.



Use of the Department of the House of Representatives material under a [Creative Commons BY Attribution 3.0 Australia](http://creativecommons.org/licenses/by/3.0/au/legalcode) licence requires you to attribute the work (but not in any way that suggests that the Department of the House of Representatives endorses you or your use of the work).

The Department of the House of Representatives material used 'as supplied'

Provided you have not modified or transformed the Department of the House of Representatives material in any way including, for example, by changing the Department of the House of Representatives text; calculating percentage changes; graphing or charting data; or deriving new statistics from published the Department of the House of Representatives statistics – then the Department of the House of Representatives prefers the following attribution:

Source: The Australian Department of the House of Representatives

Derivative material

If you have modified or transformed the Department of the House of Representatives material, or derived new material from those of the Department of the House of Representatives in any way, then the Department of the House of Representatives prefers the following attribution:

Based on The Australian Department of the House of Representatives data

Use of the Coat of Arms

The terms under which the Coat of Arms can be used are set out on the Department of the Prime Minister and Cabinet website (see www.pmc.gov.au/government/commonwealth-coat-arms).

Other uses

Enquiries regarding this licence and any other use of this document are welcome at: finance.reps@aph.gov.au



PARLIAMENT HOUSE
CANBERRA 2600

Honourable Members

I hereby submit the October Portfolio Budget Statements in support of the 2022-23 October Budget for the Department of the House of Representatives.

These statements have been developed, and are submitted to the Parliament, as a statement on the outcomes for the portfolio.

I present these statements to provide accountability to the Parliament and, through it, the public.

Yours sincerely

A handwritten signature in black ink that reads 'Milton Dick'.

Hon. Milton Dick MP
Speaker

19 October 2022

Abbreviations and conventions

The following notation may be used:

NEC/nec	not elsewhere classified
-	nil
..	not zero, but rounded to zero
na	not applicable (unless otherwise specified)
nfp	not for publication
\$m	\$ million
\$b	\$ billion

Figures in tables and in the text may be rounded. Figures in text are generally rounded to one decimal place, whereas figures in tables are generally rounded to the nearest thousand. Discrepancies in tables between totals and sums of components are due to rounding.

Enquiries

Should you have any enquiries regarding this publication please contact Kate Moore, Chief Finance Officer, Department of the House of Representatives on (02) 6277 4448.

Links to Portfolio Budget Statements (including Portfolio Additional Estimates Statements and Portfolio Supplementary Additional Statements) can be located on the Australian Government Budget website at: www.budget.gov.au.

**User Guide
To The
Portfolio Budget Statements**

User guide

The purpose of the October 2022-23 *Portfolio Budget Statements* (PB Statements) is to inform Senators and Members of Parliament of the proposed allocation of resources to government outcomes by entities within the portfolio. Entities receive resources from the annual appropriations acts, special appropriations (including standing appropriations and special accounts), and revenue from other sources.

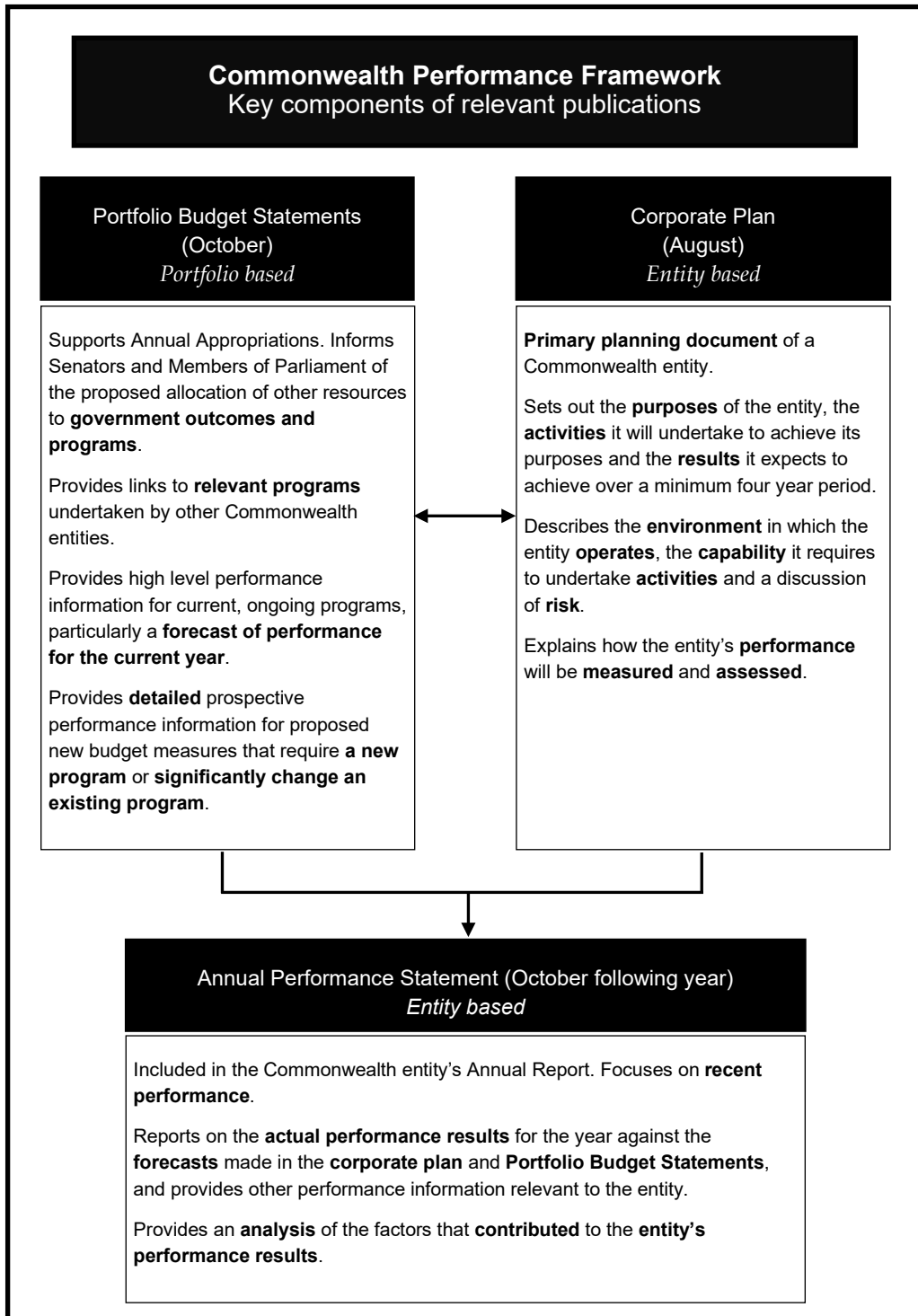
A key role of the PB Statements is to facilitate the understanding of proposed annual appropriations in Appropriation Bills (No. 1 and No. 2) 2022-23 (or Appropriation (Parliamentary Departments) Bill (No. 1) 2022-23 for the parliamentary departments). In this sense, the PB Statements are Budget related papers and are declared by the Appropriation Acts to be 'relevant documents' to the interpretation of the Acts according to section 15AB of the *Acts Interpretation Act 1901*.

The PB Statements provide information, explanation and justification to enable Parliament to understand the purpose of each outcome proposed in the Bills.

As required under section 12 of the *Charter of Budget Honesty Act 1998*, only entities within the general government sector are included as part of the Commonwealth general government sector fiscal estimates and produce PB Statements where they receive funding (either directly or via portfolio departments) through the annual appropriation acts.

The Commonwealth Performance Framework

The following diagram outlines the key components of the Commonwealth performance framework. The diagram identifies the content of each of the publications and the relationship between them. Links to the publications for each entity within the portfolio can be found in the introduction to Section 2: Outcomes and planned performance.



Contents

User guide	vii
Department of the House of Representatives overview	3
Department of the House of Representatives	7
Section 1: Entity overview and resources	7
1.1 Strategic direction statement.....	7
1.2 Entity resource statement.....	8
Section 2: Outcomes and planned performance	11
2.1 Budgeted expenses and performance for Outcome 1	12
Section 3: Budgeted financial statements	17
3.1 Budgeted financial statements	17

Departmental Overview

Department of the House of Representatives overview

Departmental responsibilities

The department is one of four parliamentary departments supporting the Australian Parliament.

The department's purpose, as set out in its Corporate Plan, is:

To support the House of Representatives, and the wider Parliament, in the role of a representative and legislative body primarily by providing advice and services, and through engaging with the community and other parliaments.

The department provides facilities, support, advice and information to ensure that:

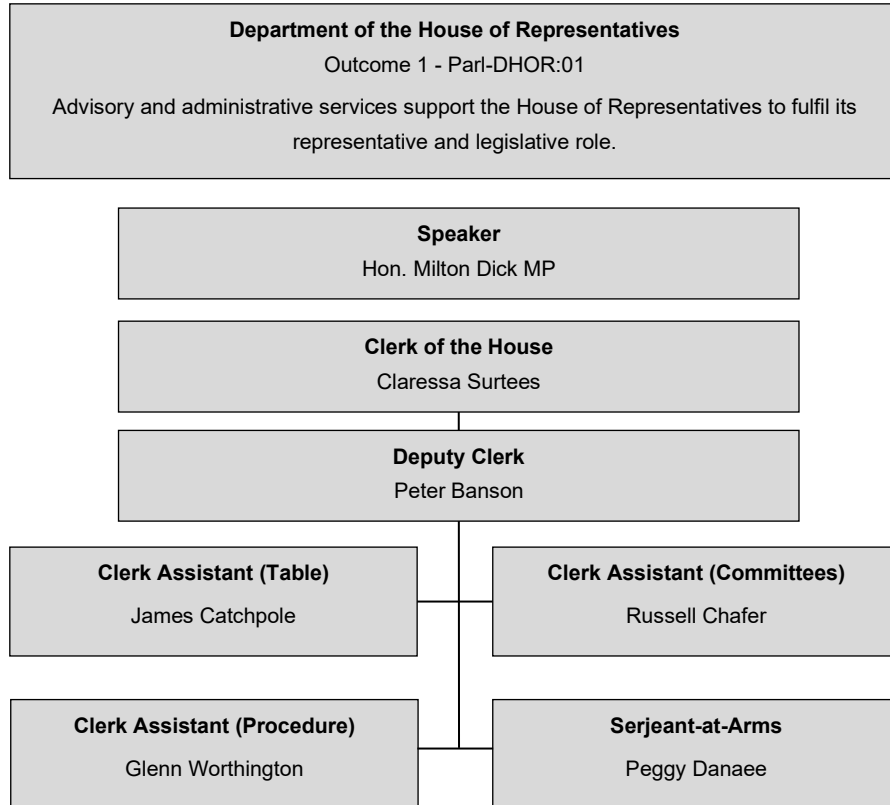
- the Chamber and Federation Chamber operate effectively;
- parliamentary committees operate effectively;
- Members receive appropriate services to fulfil their parliamentary duties;
- international and regional relationships with other parliaments, parliamentary bodies and organisations are maintained;
- the community understands, and interacts with, the work of the House of Representatives and the Australian Parliament; and
- the corporate offices fulfil their responsibilities for the management of people, finances, and office services.

The Speaker, Hon. Milton Dick MP, has accountability obligations to the House of Representatives for the department. The Clerk of the House of Representatives, Ms Claressa Surtees, is responsible for leading the department.

The department works with the Department of the Senate, the Department of Parliamentary Services, the Office of the Governor-General and relevant government agencies to ensure the outcomes of parliamentary proceedings are processed and recorded accurately and on time.

For information on resourcing across the portfolio, please refer to Part 1: Agency Financial Resourcing in the October *Budget Paper No. 4: Agency Resourcing*.

Figure 1: Departmental structure and outcomes



Department of the House of Representatives

Departmental resources and planned performance

Department of the House of Representatives

Section 1: Entity overview and resources

1.1 Strategic direction statement

The Department of the House of Representatives is one of four departments of the Australian Parliamentary Service established under the *Parliamentary Service Act 1999*. The department's purpose is to support the House of Representatives, and the wider Parliament, in the role of a representative and legislative body primarily by providing advice and services, and through engaging with the community and other parliaments.

The department is committed to the delivery of high standards of service to the House of Representatives, committees and Members; to the wider Parliament; and to the public. We seek to work collaboratively with other parliamentary departments, and with other key people and organisations to ensure a seamless service delivery to our clients.

The strategic priority areas for the department are to:

- develop and maintain a capable and experienced workforce to ensure the department has sufficient and sustainable capability and capacity to undertake the range of activities required to achieve its purpose
- identify ways to improve information management and processes, using a risk-based approach to identify and prioritise information management projects and initiatives
- promote the work of the House and its committees through a range of publications and awareness activities, including digital publications, events, seminars and social media activities
- manage assets to meet the evolving needs and expectations of stakeholders, and the business requirements of the House and the Parliament
- uphold the institution of the Parliament, and of the House in particular, by building understanding of its history, traditions, procedures and operations; and
- collaborate with colleagues across the parliamentary service and rely on their professional skills to provide services to members and others.

Further details on the performance criteria for each of the department's activity areas can be found in section 2 of this document.

1.2 Entity resource statement

Table 1.1 shows the total funding from all sources available to the entity for its operations and to deliver programs and services on behalf of the Government.

The table summarises how resources will be applied by outcome (government strategic policy objectives) and by administered (on behalf of the Government or the public) and departmental (for the entity's operations) classification.

For more detailed information on special accounts and special appropriations, please refer to the October *Budget Paper No. 4 – Agency Resourcing*.

Information in this table is presented on a resourcing (that is, appropriations/cash available) basis, whilst the 'Budgeted expenses by Outcome 1' tables in Section 2 and the financial statements in Section 3 are presented on an accrual basis.

Table 1.1: Departmental resource statement — Budget estimates for 2022-23 as at October Budget 2022

	2021-22 <i>Estimated actual</i> \$'000	2022-23 Estimate \$'000
Departmental		
Annual appropriations (a)		
Prior year appropriations available (b)	24,251	24,251
Departmental appropriation (c)	25,024	24,446
s74 External Revenue (d)	164	69
Departmental capital budget (e)	640	646
Total departmental annual appropriations	50,079	49,412
Total departmental resourcing	50,079	49,412
Administered		
Annual appropriations (a)		
Outcome 1	86	334
Total administered annual appropriations	86	334
Total administered resourcing	86	334
Total resourcing for the Department of the House of Representatives	50,165	49,746
	2021-22	2022-23
Average staffing level (number)	151	166

Prepared on a resourcing (i.e. appropriations available) basis.

(a) Appropriation (Parliamentary Departments) Bill (No. 1) 2022-23, Supply (Parliamentary Departments) Bill (No.1) 2022-23.

(b) Excludes any amount subject to administrative quarantine by Finance or withheld under section 51 of the *Public Governance, Performance and Accountability Act 2013 (PGPA Act)*.

(c) Excludes departmental capital budget (DCB).

(d) Estimated External Revenue receipts under section 74 of the PGPA Act.

(e) Departmental capital budgets are not separately identified in Appropriation (Parliamentary Departments) Bill (No.1) and form part of annual appropriations. Please refer to Table 3.5 for further details. For accounting purposes, this amount has been designated as a 'contribution by owner'.

Third party payments from and on behalf of other entities

	<i>2021-22 Estimated actual \$'000</i>	<i>2022-23 Estimate \$'000</i>
Payments made on behalf of another entity (as disclosed in the respective entity's resource statement)	<i>49,894</i>	<i>68,500</i>

All figures shown above are GST exclusive.

Section 2: Outcomes and planned performance

Outcomes are the intended results, impacts or consequences of actions for the Australian community. Programs are the primary vehicle by which entities achieve the intended results of their outcome statements. Entities are required to identify the programs which contribute to outcomes over the Budget and forward years.

Each outcome is described below together with its related programs. The following provides detailed information on expenses for each outcome and program, further broken down by funding source.

Note:

Performance reporting requirements in the Portfolio Budget Statements are part of the Commonwealth performance framework established by the *Public Governance, Performance and Accountability Act 2013*. It is anticipated that the performance measure described in Portfolio Budget Statements will be read with broader information provided in an entity's corporate plans and annual performance statements - included in Annual Reports - to provide a complete picture of an entity's planned and actual performance.

The most recent corporate plan for the Department of the House of Representatives can be found at: www.aph.gov.au/DHR/CorporatePlan.

The most recent annual performance statement can be found at: www.aph.gov.au/DHR/AnnualReport.

2.1 Budgeted expenses and performance for Outcome 1

Outcome 1: Advisory and administrative services support the House of Representatives to fulfil its representative and legislative role.

This table shows how much the department intends to spend (on an accrual basis) on achieving the outcome, broken down by program, as well as by Administered and Departmental funding sources.

Table 2.1.1: Budgeted expenses for Outcome 1

Outcome 1: Other Departmental DHOR					
	2021-22 Estimated actual \$'000	2022-23 Budget \$'000	2023-24 Forw ard estimate \$'000	2024-25 Forw ard estimate \$'000	2025-26 Forw ard estimate \$'000
Program 1: Other Departmental DHOR					
Departmental expenses					
Departmental appropriation	23,093	24,297	24,853	25,234	25,474
s74 External Revenue (a)	164	69	97	98	108
Expenses not requiring appropriation in the Budget year (b)	2,745	2,781	2,822	2,883	2,882
Departmental total	26,002	27,147	27,772	28,215	28,464
Total expenses for program 1	26,002	27,147	27,772	28,215	28,464
Program 2: Schools Hospitality					
Administered expenses					
Appropriation (Parliamentary Departments) Bill No.1	86	334	347	355	362
Administered total	86	334	347	355	362
Total expenses for program 2	86	334	347	355	362
Outcome 1 Totals by appropriation type					
Administered expenses					
Appropriation (Parliamentary Departments) Bill No.1	86	334	347	355	362
Administered total	86	334	347	355	362
Departmental expenses					
Departmental appropriation	23,093	24,297	24,853	25,234	25,474
s74 External Revenue (a)	164	69	97	98	108
Expenses not requiring appropriation in the Budget year (b)	2,745	2,781	2,822	2,883	2,882
Departmental total	26,002	27,147	27,772	28,215	28,464
Total expenses for Outcome 1	26,088	27,481	28,119	28,570	28,826
	2021-22	2022-23			
Average staffing level (number)	151	166			

(a) Estimated expenses incurred in relation to receipts retained under section 74 of the *PGPA Act 2013*.

(b) Expenses not requiring appropriation in the Budget year are made up of depreciation expenses, lease expense and audit fees.

Note: Departmental appropriation splits and totals are indicative estimates and may change in the course of the budget year.

Table 2.1.2: Program components of Outcome 1

Program 1: Other Departmental DHOR					
	2021-22 Estimated actual \$'000	2022-23 Budget \$'000	2023-24 Forw ard estimate \$'000	2024-25 Forw ard estimate \$'000	2025-26 Forw ard estimate \$'000
1.1 - Chamber and Federation Chamber					
Annual departmental expenses:					
Departmental item appropriation	4,332	4,559	4,664	4,734	4,780
s74 External Revenue (a)	31	13	18	19	20
Total component 1 expenses	4,363	4,572	4,682	4,753	4,800
1.2 - Committee Services					
Annual departmental expenses:					
Departmental item appropriation	9,456	9,950	10,178	10,334	10,434
s74 External Revenue (a)	67	29	40	40	42
Total component 2 expenses	9,523	9,979	10,218	10,374	10,476
1.3 - Inter - Parliamentary Relations and Capacity Building					
Annual departmental expenses:					
Departmental item appropriation	1,435	1,504	1,540	1,564	1,579
s74 External Revenue (a)	10	4	6	6	7
Total component 3 expenses	1,445	1,508	1,546	1,570	1,586
1.4 - Community Relations and Awareness					
Annual departmental expenses:					
Departmental item appropriation	543	573	586	595	599
s74 External Revenue (a)	3	-	-	-	2
Total component 4 expenses	546	573	586	595	601
1.5 - Members' and Corporate Support					
Annual departmental expenses:					
Departmental item appropriation	7,327	7,711	7,885	8,007	8,082
s74 External Revenue (a)	53	23	33	33	37
Total component 5 expenses	7,380	7,734	7,918	8,040	8,119
Expenses not requiring appropriation in the Budget year (b)	2,745	2,781	2,822	2,883	2,882
Total program 1 expenses	26,002	27,147	27,772	28,215	28,464
(a) Estimated expenses incurred in relation to receipts retained under section 74 of the PGPA Act					
(b) Expenses not requiring appropriation in the Budget year are made up of depreciation expenses, lease expense and audit fees.					
Program 2: Administered					
	2021-22 Estimated actual \$'000	2022-23 Budget \$'000	2023-24 Forw ard estimate \$'000	2024-25 Forw ard estimate \$'000	2025-26 Forw ard estimate \$'000
Annual administered expenses:					
Appropriation (Parliamentary Departments) Bill No.1	86	334	347	355	362
Total program 2 expenses	86	334	347	355	362

Table 2.1.3: Performance measure for Outcome 1

Table 2.1.3 details the performance measures for each program associated with Outcome 1. It also provides the related key activities as expressed in the current corporate plan where further detail is provided about the delivery of the activities related to the program, the context in which these activities are delivered and how the performance of these activities will be measured. Where relevant, details of the October 2022-23 Budget measures that have created new programs or materially changed existing programs are provided.

Outcome 1 – Advisory and administrative services support the House of Representatives to fulfil its representative and legislative role.		
Program 1- Departmental		
To provide support to the House of Representatives and the wider Parliament in the role of a representative and legislative body.		
Key Activities (a)	The department undertakes five distinct activities in supporting the House to carry out its representative and legislative functions. These activities are: <ul style="list-style-type: none"> • Chamber and Federation Chamber • Committee services • Inter-parliamentary relations and capacity building • Community relations and awareness • Members' and corporate support 	
Year	Performance measures	Expected Performance Results
Prior year 2021-22	1. Chamber and Federation Chamber Level of satisfaction among surveyed members with the quality and timeliness of chamber support, procedural and statistical publications, analysis and advisory services Chamber support service standards met for sittings of the House and meetings of the Federation Chamber and processing of bills, votes, messages, and other chamber documents with high degree of accuracy and within timeframes	90% satisfied - Target met 100% - Target not met on one occasion
	2. Committee Services Level of satisfaction among surveyed committee members with the standard of administrative and procedural support provided Level of satisfaction among surveyed committee members with the standard of research and drafting support provided	90% satisfied – Target met 90% satisfied – Target met
	3. Inter-parliamentary relations and capacity building Level of satisfaction of Presiding Officers and delegates with arrangements for official incoming delegations	90% satisfied – Target met

Outcome 1 – Advisory and administrative services support the House of Representatives to fulfil its representative and legislative role.		
Program 1- Departmental		
To provide support to the House of Representatives and the wider Parliament in the role of a representative and legislative body.		
	Level of satisfaction of Presiding Officers and delegates with arrangements for outgoing delegations	90% satisfied – Target met
	Level of satisfaction among participants with capacity building activities	90% satisfied – Target met
	4. Community relations and awareness Community is aware of, and engages with, published information about legislative and other parliamentary processes Clients are satisfied with seminars	Interaction with the work of the House increasing over time (% change on prior year) – Target met 90% satisfied – Target met
	5. Members’ and corporate support Speaker’s level of satisfaction with the overall quality of non-chamber support services provided, including accommodation, office support, transport coordination, salary processing and other members’ support services Level of satisfaction among members with the overall quality of non-chamber support services provided, including accommodation, office support, transport coordination, salary processing and other members’ support services	Very satisfied -Target met 90% satisfied – Target met
Year	Performance measures	Planned Performance Results
Budget Year 2022-23	1. Chamber and Federation Chamber Level of satisfaction among surveyed members with the quality and timeliness of chamber support, procedural and statistical publications, analysis and advisory services Chamber support service standards met for sittings of the House and meetings of the Federation Chamber and processing of bills, votes, messages, and other chamber documents with high degree of accuracy and within timeframes	90% satisfied 100%
	2. Committee Services Level of satisfaction among surveyed committee members with the standard of administrative and procedural support provided	90% satisfied

Outcome 1 – Advisory and administrative services support the House of Representatives to fulfil its representative and legislative role.		
Program 1- Departmental		
To provide support to the House of Representatives and the wider Parliament in the role of a representative and legislative body.		
	Level of satisfaction among surveyed committee members with the standard of research and drafting support provided	90% satisfied
	3. Inter-parliamentary relations and capacity building Level of satisfaction of Presiding Officers and delegates with arrangements for official incoming delegations Level of satisfaction of Presiding Officers and delegates with arrangements for outgoing delegations Level of satisfaction among participants with capacity building activities	90% satisfied 90% satisfied 90% satisfied
	4. Community relations and awareness Community is aware of, and engages with, published information about legislative and other parliamentary processes Clients are satisfied with seminars	Interaction with <i>published information about the work</i> of the House increasing over time (% change on prior year) 90% satisfied
	5. Members' and corporate support Speaker's level of satisfaction with the overall quality of non-chamber support services provided, including accommodation, office support, transport coordination, salary processing and other members' support services Level of satisfaction among members with the overall quality of non-chamber support services provided, including accommodation, office support, transport coordination, salary processing and other members' support services	Very satisfied 90% satisfied
Forward Estimates 2023-26	As per 2022-23	As per 2022-23

Section 3: Budgeted financial statements

Section 3 presents budgeted financial statements which provide a comprehensive snapshot of entity finances for the 2022-23 budget year, including the impact of budget measures and resourcing on financial statements.

3.1 Budgeted financial statements

3.1.2 Explanatory notes and analysis of budgeted financial statements

The department finished the 2021–22 financial year with total comprehensive income of \$0.3m. The department’s employee benefits of \$20.5m was below the budget estimate reported in the 2021–22 Portfolio Budget Statements (PBS). This was due to average staffing levels being below budget as a number of positions were vacant during the year.

Supplier expenses were \$4.8m, in line with the budget estimate reported in the 2021–22 PBS. As anticipated, both committee office domestic travel in support of hearings and the incoming and outgoing official international delegation program were affected by the COVID–19 travel restrictions. The department continues to make use of video conferencing to provide support to committee meetings and to attend virtual conferences. Technologies will continue to be investigated to enhance these capabilities using existing funding resources.

The department continues to provide a booking service and hospitality for school groups visiting Parliament House. The program was put on hold during sittings for 2021–22 as visitors to Parliament House were restricted due to COVID–19. Funds are provided through administered funding and expenditure is shown at table 3.7.

The department’s balance sheet remains in a strong position with sufficient cash reserves to cover its liabilities. Depreciation and amortisation expenses are not funded as part of operating revenue as the department receives a contribution through equity for its departmental capital budget. This is shown at table 3.5. The department has completed major replacements of furniture and equipment over the preceding years and other non-financial assets will now only be replaced, redeveloped or maintained where necessary. Funding for these items will come from the departmental capital budget.

3.2. Budgeted financial statements tables

Table 3.1: Comprehensive income statement (showing net cost of services) for the period ended 30 June

	2021-22 Estimated actual \$'000	2022-23 Budget \$'000	2023-24 Forw ard estimate \$'000	2024-25 Forw ard estimate \$'000	2025-26 Forw ard estimate \$'000
EXPENSES					
Employee benefits	20,521	22,265	22,683	22,923	23,453
Suppliers	4,839	4,302	4,571	4,729	4,433
Depreciation and amortisation (a)	557	579	517	562	577
Finance costs	1	1	1	1	1
Losses from asset sales	84				
Total expenses	26,002	27,147	27,772	28,215	28,464
LESS:					
OWN-SOURCE INCOME					
Own-source revenue					
Sale of goods and rendering of services	137	53	50	50	60
Interest	16	16	42	43	43
Royalties	11	-	5	5	5
Total own-source revenue	164	69	97	98	108
Gains					
Other	1,944	2,090	2,000	2,100	2,100
Total gains	1,944	2,090	2,000	2,100	2,100
Total own-source income	2,108	2,159	2,097	2,198	2,208
Net (cost of)/contribution by services	(23,894)	(24,988)	(25,675)	(26,017)	(26,256)
Revenue from Government	25,024	24,446	25,194	25,491	25,715
Surplus/(deficit) attributable to the Australian Government	1,130	(542)	(481)	(526)	(541)
OTHER COMPREHENSIVE INCOME					
Changes in asset revaluation surplus	(792)	-	-	-	-
Total other comprehensive income	(792)	-	-	-	-
Total comprehensive income/(loss)	338	(542)	(481)	(526)	(541)
Total comprehensive income/(loss) attributable to the Australian Government	338	(542)	(481)	(526)	(541)

Table 3.1: Comprehensive income statement (showing net cost of services) for the period ended 30 June (continued)**Note: Impact of net cash appropriation arrangements**

	2021-22 Estimated actual \$'000	2022-23 Budget \$'000	2023-24 Forward estimate \$'000	2024-25 Forward estimate \$'000	2025-26 Forward estimate \$'000
Total comprehensive income/(loss)					
- as per statement of					
Comprehensive Income	338	(542)	(481)	(526)	(541)
plus: depreciation/amortisation of assets funded through appropriations (departmental capital budget funding and/or equity injections) (a)	541	541	480	525	540
plus: depreciation/amortisation expenses for ROU assets (b)	16	38	37	37	37
less: lease principal repayments (b)	16	37	36	36	36
Net Cash Operating Surplus/ (Deficit)	879	-	-	-	-

Prepared on Australian Accounting Standards basis.

(a) From 2010-11, the Government introduced net cash appropriation arrangements where Bill 1 revenue appropriations for the depreciation/amortisation expenses of non-corporate Commonwealth entities (and select corporate Commonwealth entities) were replaced with a separate capital budget (the Departmental Capital Budget, or DCB) provided through Bill 1 equity appropriations. For information regarding DCBs, please refer to Table 3.5 Departmental Capital Budget Statement.

(b) Applies leases under AASB 16 Leases.

Table 3.2: Budgeted departmental balance sheet (as at 30 June)

	2021-22 Estimated actual \$'000	2022-23 Budget \$'000	2023-24 Forward estimate \$'000	2024-25 Forward estimate \$'000	2025-26 Forward estimate \$'000
ASSETS					
Financial assets					
Cash and cash equivalents	1,121	1,121	1,121	1,121	1,121
Trade and other receivables	24,377	24,377	24,377	24,377	24,377
Other investments	2,480	2,480	2,480	2,480	2,480
Total financial assets	27,978	27,978	27,978	27,978	27,978
Non-financial assets					
Property, plant and equipment	3,671	3,630	3,804	3,944	4,075
Intangibles	139	284	297	307	317
Inventories	10	10	10	10	10
Other non-financial assets	211	211	211	211	211
Total non-financial assets	4,031	4,135	4,322	4,472	4,613
Total assets	32,009	32,113	32,300	32,450	32,591
LIABILITIES					
Payables					
Suppliers	1,297	1,297	1,297	1,297	1,297
Other payables	492	492	492	492	492
Total payables	1,789	1,789	1,789	1,789	1,789
Interest bearing liabilities					
Leases	37	37	38	39	40
Total interest bearing liabilities	37	37	38	39	40
Provisions					
Employee provisions	6,261	6,261	6,261	6,261	6,261
Total provisions	6,261	6,261	6,261	6,261	6,261
Total liabilities	8,087	8,087	8,088	8,089	8,090
Net assets	23,922	24,026	24,212	24,361	24,501
EQUITY*					
Parent entity interest					
Contributed equity	(11,293)	(10,647)	(9,980)	(9,305)	(8,624)
Reserves	12,971	12,971	12,971	12,971	12,971
Retained surplus (accumulated deficit)	22,244	21,702	21,221	20,695	20,154
Total parent entity interest	23,922	24,026	24,212	24,361	24,501
Total equity	23,922	24,026	24,212	24,361	24,501

Prepared on Australian Accounting Standards basis.

*Equity is the residual interest in assets after the deduction of liabilities.

Table 3.3: Departmental statement of changes in equity — summary of movement (Budget year 2022-23)

	Retained earnings	Asset revaluation reserve	Other reserves	Contributed equity/capital	Total equity
	\$'000	\$'000	\$'000	\$'000	\$'000
Opening balance as at 1 July 2022					
Balance carried forward from previous period	22,244	12,971	-	(11,293)	23,922
Adjusted opening balance	22,244	12,971	-	(11,293)	23,922
Comprehensive income					
Other comprehensive income					-
Surplus/(deficit) for the period	(542)	-	-	-	(542)
Total comprehensive income	(542)	-	-	-	(542)
Contributions by owners					
Departmental Capital Budget (DCB)	-	-	-	646	646
Sub-total transactions with owners	-	-	-	646	646
Estimated closing balance as at 30 June 2023	21,702	12,971	-	(10,647)	24,026
Closing balance attributable to the Australian Government	21,702	12,971	-	(10,647)	24,026

Prepared on Australian Accounting Standards basis.

Table 3.4: Budgeted departmental statement of cash flows (for the period ended 30 June)

	2021-22 Estimated actual \$'000	2022-23 Budget \$'000	2023-24 Forw ard estimate \$'000	2024-25 Forw ard estimate \$'000	2025-26 Forw ard estimate \$'000
OPERATING ACTIVITIES					
Cash received					
Appropriations	21,357	24,446	25,194	25,491	25,715
Sale of goods and rendering of services	122	53	50	50	60
Interest	16	16	42	43	43
Net GST received	(8)	5			
Other	96	-	5	5	5
Total cash received	21,583	24,520	25,291	25,589	25,823
Cash used					
Employees	20,607	22,265	22,683	22,923	23,453
Suppliers	1,985	2,212	2,571	2,629	2,333
Net GST paid	-	5	-	-	-
Interest payments on lease liability	1	1	1	1	1
Other	(62)	-	-	-	-
Total cash used	22,531	24,483	25,255	25,553	25,787
Net cash from/(used by) operating activities	(948)	37	36	36	36
INVESTING ACTIVITIES					
Cash received					
Proceeds from sales of property, plant and equipment	2	-	-	-	-
Total cash received	2	-	-	-	-
Cash used					
Purchase of property, plant and equipment and intangibles	112	646	667	675	681
Purchase of financial instruments	(87)	-	-	-	-
Total cash used	25	646	667	675	681
Net cash from/(used by) investing activities	(23)	(646)	(667)	(675)	(681)
FINANCING ACTIVITIES					
Cash received					
Contributed equity	640	646	667	675	681
Total cash received	640	646	667	675	681
Cash used					
Principal payments on lease liability	16	37	36	36	36
Total cash used	16	37	36	36	36
Net cash from/(used by) financing activities	624	609	631	639	645
Net increase/(decrease) in cash held	(347)	-	-	-	-
Cash and cash equivalents at the beginning of the reporting period	1,468	1,121	1,121	1,121	1,121
Cash and cash equivalents at the end of the reporting period	1,121	1,121	1,121	1,121	1,121

Prepared on Australian Accounting Standards basis.

Table 3.5: Departmental capital budget statement (for the period ended 30 June)

	2021-22 Estimated actual \$'000	2022-23 Budget \$'000	2023-24 Forward estimate \$'000	2024-25 Forward estimate \$'000	2025-26 Forward estimate \$'000
NEW CAPITAL APPROPRIATIONS					
Capital budget - Bill 1 (DCB)	640	646	667	675	681
Total new capital appropriations	640	646	667	675	681
<i>Provided for:</i>					
<i>Purchase of non-financial assets</i>	640	646	667	675	681
Total items	640	646	667	675	681
PURCHASE OF NON-FINANCIAL ASSETS					
Funded by capital appropriation - DCB (a)	640	646	667	675	681
TOTAL	640	646	667	675	681
RECONCILIATION OF CASH USED TO ACQUIRE ASSETS TO ASSET MOVEMENT TABLE					
Total purchases	640	646	667	675	681
less: additions by creditors / borrowings					
Total cash used to acquire assets	640	646	667	675	681

Prepared on Australian Accounting Standards basis.

(a) Includes purchases from current and previous years' Departmental Capital Budgets (DCBs).

Table 3.6: Statement of departmental asset movements (Budget year 2022-23)

	Other property, plant and equipment \$'000	Heritage and cultural \$'000	Computer software and intangibles \$'000	Total \$'000
As at 1 July 2022				
Gross book value	3,065	570	807	4,442
Gross book value - ROU assets	51	-	-	51
Accumulated depreciation/ amortisation and impairment	(2)	-	(668)	(670)
Accumulated depreciation/amortisation and impairment - ROU assets	(13)	-	-	(13)
Opening net book balance	3,101	570	139	3,810
Capital asset additions				
Estimated expenditure on new or replacement assets				
By purchase - appropriation (a)	396	-	250	646
By purchase - appropriation - ROU assets	37	-	-	37
Total additions	433	-	250	683
Other movements				
Depreciation/amortisation expense	(436)	-	(105)	(541)
Depreciation/amortisation on ROU assets	(38)	-	-	(38)
Total other movements	(474)	-	(105)	(579)
As at 30 June 2023				
Gross book value	3,461	570	1,057	5,088
Gross book value - ROU assets	88	-	-	88
Accumulated depreciation/ amortisation and impairment	(438)	-	(773)	(1,211)
Accumulated depreciation/amortisation and impairment - ROU assets	(51)	-	-	(51)
Closing net book balance	3,060	570	284	3,914

Prepared on Australian Accounting Standards basis.

(a) 'Appropriation' refers to funding provided through Appropriation (Parliamentary Departments) Bill No.1 2022-23 for depreciation/amortisation expenses, Departmental Capital Budget or other operational expenses.

Table 3.7: Schedule of budgeted income and expenses administered on behalf of Government (for the period ended 30 June)

	2021-22 Estimated actual \$'000	2022-23 Budget \$'000	2023-24 Forward estimate \$'000	2024-25 Forward estimate \$'000	2025-26 Forward estimate \$'000
EXPENSES					
Suppliers	86	334	347	355	362
Total expenses administered on behalf of Government	86	334	347	355	362
Net (cost of)/contribution by services	86	334	347	355	362
Surplus/(deficit) before income tax	86	334	347	355	362
Surplus/(deficit) after income tax	86	334	347	355	362
Total comprehensive income/(loss)	86	334	347	355	362

Prepared on Australian Accounting Standards basis.

Table 3.8: Schedule of budgeted assets and liabilities administered on behalf of Government (as at 30 June)

	2021-22 Estimated actual \$'000	2022-23 Budget \$'000	2023-24 Forward estimate \$'000	2024-25 Forward estimate \$'000	2025-26 Forward estimate \$'000
ASSETS					
Financial assets					
Trade and other receivables	1	1	1	1	1
Total financial assets	1	1	1	1	1
Total assets administered on behalf of Government	1	1	1	1	1
LIABILITIES					
Payables					
Suppliers	30	30	30	30	30
Other payables	1	1	1	1	1
Total payables	31	31	31	31	31
Total liabilities administered on behalf of Government	31	31	31	31	31
Net assets/(liabilities)	(30)	(30)	(30)	(30)	(30)

Prepared on Australian Accounting Standards basis.

Table 3.9: Schedule of budgeted administered cash flows (for the period ended 30 June)

	2021-22 Estimated actual \$'000	2022-23 Budget \$'000	2023-24 Forward estimate \$'000	2024-25 Forward estimate \$'000	2025-26 Forward estimate \$'000
OPERATING ACTIVITIES					
Cash received					
Net GST received	2	-	-	-	-
Total cash received	2	-	-	-	-
Cash used					
Suppliers	71	334	347	355	362
Other	2	-	-	-	-
Total cash used	73	334	347	355	362
Net cash from/(used by) operating activities	(71)	(334)	(347)	(355)	(362)
Net increase/(decrease) in cash held	(71)	(334)	(347)	(355)	(362)
Cash and cash equivalents at beginning of reporting period					
Cash from Official Public Account for:					
- Appropriations	71	334	347	355	362
<i>Total cash from Official Public Account</i>	<i>71</i>	<i>334</i>	<i>347</i>	<i>355</i>	<i>362</i>
Cash and cash equivalents at end of reporting period	-	-	-	-	-

Prepared on Australian Accounting Standards basis.



Budget

October

2022-23

PORTFOLIO BUDGET STATEMENTS 2022-23
BUDGET RELATED PAPER NO. 1.14A

DEPARTMENT OF THE
HOUSE OF REPRESENTATIVES