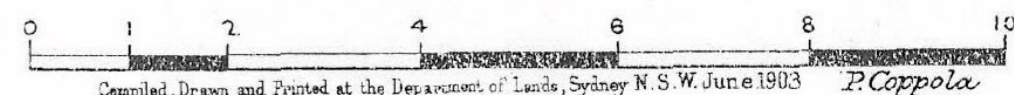


# ARMIDALE

N.S.W.

showing approximately City Site, Proposed Water Supply, Railways &c.

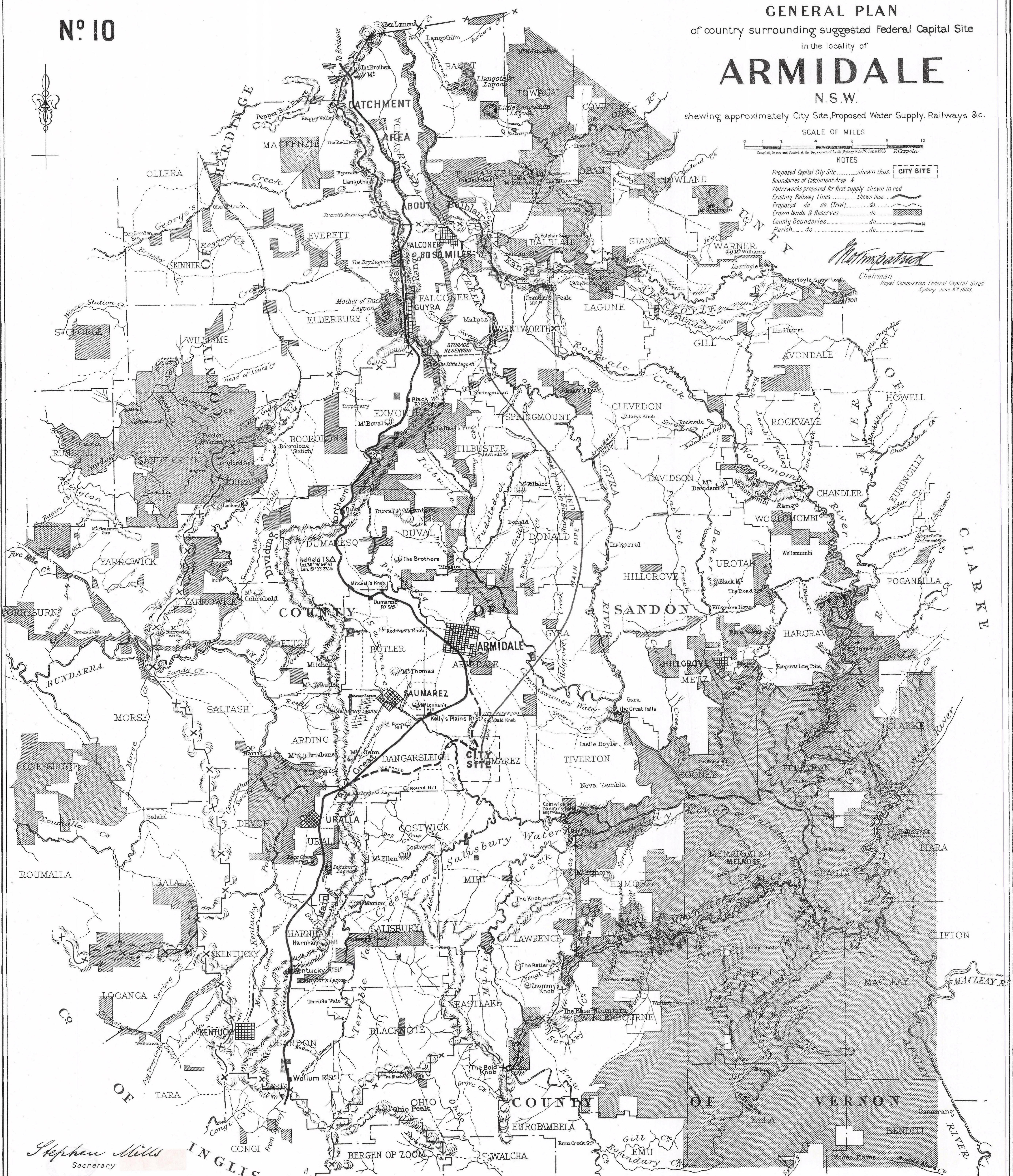
SCALE OF MILES



NOTES

- Proposed Capital City Site ..... shown thus **CITY SITE**
- Boundaries of Catchment Area & Waterworks proposed for first supply shown in red
- Existing Railway Lines ..... shown thus
- Proposed do do (Trial) ..... do
- Crown lands & Reserves ..... do
- County Boundaries ..... do
- Parish ..... do

*W. H. Mitchell*  
Chairman  
Royal Commission Federal Capital Sites  
Sydney, June 3<sup>rd</sup> 1903.



*Stephen Mills*  
Secretary

INGLIS