



Commonwealth Indigenous-specific expenditure 1968–2008

Dr John Gardiner-Garden, Social Policy Section
Malcolm Park, Statistics and Mapping Section

Executive summary

This paper attempts to identify Commonwealth expenditure in the area of Indigenous affairs over the 40 years from 1968 to 2008 and to plot that expenditure by agency.

The paper analyses trends in both the nominal and real expenditure, in the expenditure as a percentage of total Commonwealth outlays and Gross Domestic Product, and in the per-capita expenditure. In nominal and real terms Commonwealth Indigenous-specific expenditure has trended up, but as a percentage of total outlays or Gross Domestic Product it has plateaued in more recent years. The per capita trend is found to be too problematic to characterise simply.

Contents

Introduction.....	1
Historical overview.....	1
Recent developments.....	2
The trend in expenditure.....	3
Per capita expenditure.....	5
Detailed expenditure tables.....	7
Sources.....	7
Compilations of Commonwealth Indigenous-specific expenditure data.....	7
Indigenous population data.....	8
GDP and Implicit Price Deflator data.....	9
Total Commonwealth expenditure data.....	9

Introduction

This paper presents graphs, tables and commentary on the subject of identifiable Commonwealth expenditure in the area of Indigenous Affairs. This means expenditure in any portfolio through programs or program components specifically intended to address Indigenous issues or needs—that is, indigenous-specific expenditure. For the sake of brevity this is sometimes referred to in this paper as identifiable Indigenous expenditure.

In the pdf version of this paper, the tables referred to are appended at the end of the document.

In the html version of this paper, links to tables will open the relevant table in an Excel spreadsheet. All of the tables and charts referred to are in this one spreadsheet and they can be accessed via the tabs along the bottom of the screen in Excel. There is no need, therefore, to return to this page to access another table.

Historical overview

Identifiable Commonwealth expenditure in the area of Indigenous affairs began with the establishment of the Office of Aboriginal Affairs soon after the landmark referendum in 1967.¹ The expenditure was relatively low in the first few years but increased significantly with the creation of the Department of Aboriginal Affairs soon after the Whitlam Government came to office in December 1972, and continued to grow through the 1980s.

In 1990 the Department of Aboriginal Affairs was replaced by the Aboriginal and Torres Strait Islander Commission (ATSIC) and, except for a slight dip in 1993–94, identifiable Indigenous expenditure continued to rise throughout the 1990s. ATSIC expenditure as a proportion of total Indigenous expenditure started, however, to fall in the mid–1990s. This was a result of areas such as health and land acquisition being shifted out of ATSIC and some areas that remained within ATSIC receiving a funding cut following the 1996 Budget.

Although overall expenditure continued to rise from the late 1990s onward, it is difficult to compare earlier figures with those from later years because in 1998 there was a move from cash to accrual accounting and from 2000–01 the annual Ministerial statements on Identifiable Commonwealth Expenditure on Indigenous Affairs used different categories for representing expenditure. Tracking expenditure becomes even more complicated from 2002, as the successive administrative rearrangements associated with the gradual demise of ATSIC led to the staged transfer of its funding and responsibilities through, and to, a range of other agencies.

1. See J. Gardiner-Garden, *The 1967 Referendum—history and myths*, Parliamentary Library Research Brief, Canberra, 2 May 2007, <http://www.aph.gov.au/library/pubs/rb/2006-07/07rb11.pdf>, accessed on 23 September 2008.

In 2005–06 the Commonwealth introduced the reporting in the Portfolio Budget Statements of Australian Government Indigenous Expenditure figures and it is these that are used in this paper to plot expenditure over the years that followed.

Recent developments

At the end of 2007 the new Rudd Labor government introduced the words ‘partnerships’, ‘closing the gap’ and ‘sorry’ into the official language of Indigenous policy. The new Government promoted its 2008 Budget as making Indigenous expenditure commitments far in excess of the previous government, giving its ‘new and redirected funding following the 2007 election’ as \$580 million and Indigenous relevant 2008–09 Budget Measures as costing \$425.3 million—giving a total of \$1.2 billion. The period covered by individual commitments varying from one to five years. A full break down with forward estimates can be found in the [‘Whole of Government’ section of Budget Paper No.2](#), pp. 299–320 and a summary can be found on the Department of Family, Housing, Community Services and Indigenous Affairs’ web-page [Indigenous Budget at a Glance](#).² With respect to the Northern Territory these ‘new and redirected’ funds totalled \$666.1 million, with respect to Australia as a whole, \$554 million.

Although the rhetorical context was very different from that surrounding the Howard Government budgets, the programs and level of funding supported by the new Rudd Government are not very different from those of the previous government. This is borne out by comparing three figures—expenditure commitments just prior to the Northern Territory Intervention, after that intervention but before the Rudd Government’s May 2008 budget, and after the Rudd Government’s May 2008 Budget.

The total of the 2007–08 Budget Portfolio Budget Statement (PBS) ‘Australian Government Indigenous Expenditure’ (AGIE) figures for 2007–08 (that is, pre the Northern Territory Intervention) was \$3.2 billion.

The total of the 2008–09 Budget PBS AGIE actual figures for 2007–08 (that is, post the Howard Government’s Northern Territory Intervention commitments but pre-Rudd May budget commitments) was \$3.85 billion.

The total of the 2008–09 Budget PBS AGIE estimated figures for 2008–09 was \$3.86 billion.

2. Australian Government, *Budget Paper No. 2: Budget Measures 2008–09*, Commonwealth of Australia, Canberra, 2008, <http://www.budget.gov.au/2008-09/content/bp2/html/expense-25.htm> and Australian Government, Department of Families, Housing, Community Services and Indigenous Affairs, *2008–09 Indigenous Budget at a Glance*, http://www.facs.gov.au/internet/facsinternet.nsf/aboutfacs/budget/budget2008-08_indigenous_at_a_glance.htm, accessed on 19 May 2008.

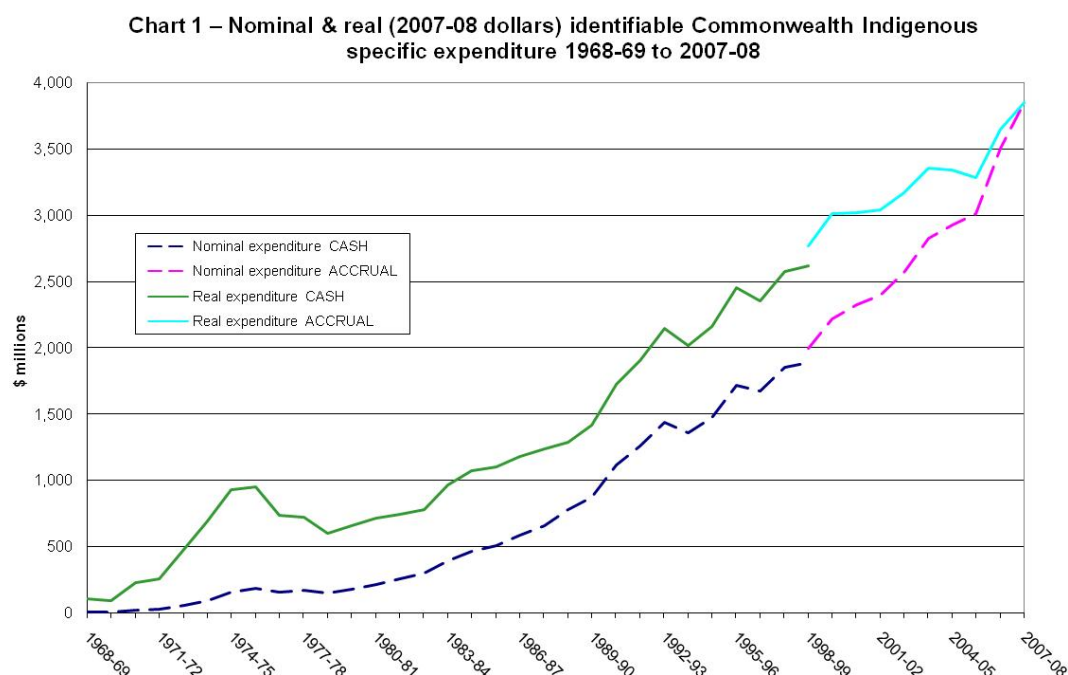
The main factor in the rise in committed expenditure between 2007 and the 2008 by both the Howard and Rudd Governments was the advent of the Northern Territory Intervention. The 2008 Budget by and large simply continued the previous government's focus on improving the situation in the Northern Territory with a scale of expenditure envisaged by the previous government.

[Table 1: Identifiable Commonwealth Expenditure on Indigenous Affairs, 1968–69 to 2007–08, Nominal and real dollars; percentages; per capita](#)

The trend in expenditure

Converting nominal expenditure to real terms³ shows a rising trend over the period, which means that increases in expenditure have been more than increases in inflation (see Table 1 and Chart 1). In real terms, identifiable Commonwealth expenditure in the area of Indigenous affairs saw a dramatic rise and fall in the early to mid 1970s—falling from \$947 million in 1975–76 to \$596 million in 1978–79—and it did not then pass the 1975–76 level until 1983–84 (\$960 million). The mid 1980s onwards has seen an almost uninterrupted rise in real expenditure, apart from small and quickly recovered declines in the mid 1990s and 2005–06. The trend can look a little different, however, when this expenditure is plotted against total government expenditure and Gross Domestic Product (GDP) and considered against total government revenue.

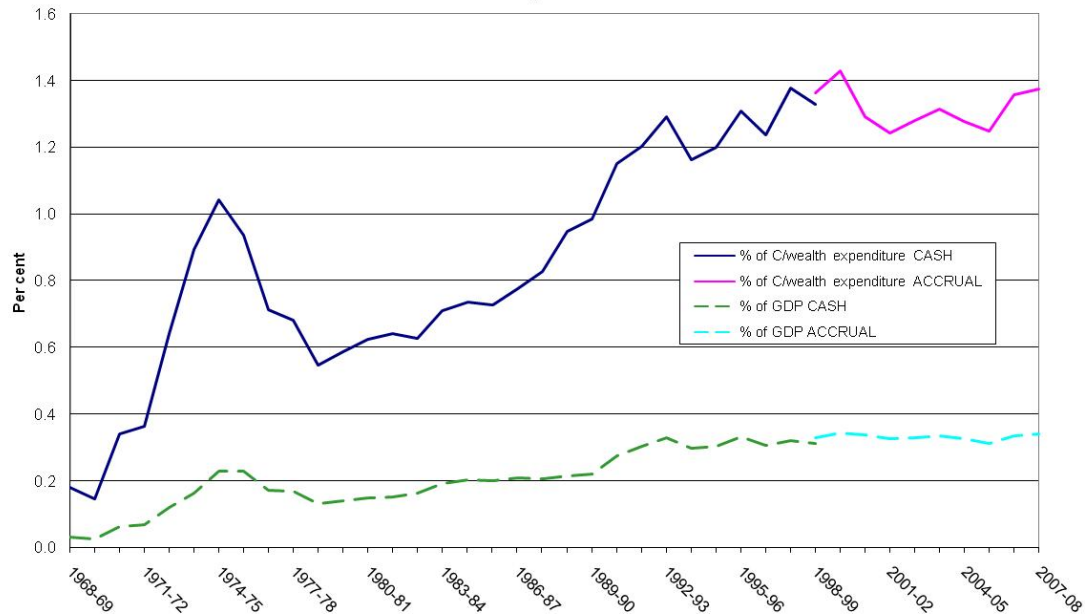
3. The nominal expenditure (what is spent each year) adjusted to remove the effect of inflation and expressed in 2007–08 dollars using the Implicit Price Deflator (IPD) for Non-Farm GDP. Essentially these figures are the expenditure of previous years expressed in current dollars, enabling a more useful comparison over time.



When expressed as a percentage of total Commonwealth expenditure, identifiable Indigenous expenditure shows the same sharp increase and fall in the mid 1970s, followed by almost continuous growth to 1992–93 (see Table 1 and Chart 2). The mid 1990s saw fluctuations with the percentage rising and falling year to year but still trending upwards. Since 1997–98, however, it has remained relatively stable around 1.35 per cent, fluctuating between a high of 1.43 per cent in 1999–2000 and a low of 1.24 per cent in 2001–02. In 1968–69 identifiable Indigenous expenditure accounted for only 0.18 per cent of total Commonwealth expenditure while in 2007–08 it accounts for an estimated 1.37 per cent.

When plotted as a percentage of GDP, Commonwealth Indigenous-specific expenditure shows a pattern broadly similar to when it is plotted as a percentage of total Commonwealth expenditure. Growth is fairly constant up until the early 1990s with a very clear stabilisation at around one third of one percentage point since then. Therefore, when measured against the economy as a whole, as measured by GDP, there has been no real growth in Indigenous-specific expenditure since the early 1990s (see Table 1 and Chart 2).

Chart 2 – Identifiable Commonwealth Indigenous specific expenditure as a percentage of total Commonwealth expenditure, and GDP, 1968-69 to 2007-08



Some commentators have also considered identifiable Indigenous expenditure in the light of the total government revenue. They have drawn attention to the fact that the plateauing of Indigenous expenditure relative to total expenditure and GDP from the late 1990s onwards, has happened in a period when the federal government has been generally presenting surplus budgets, so could theoretically (leaving all fiscal considerations and competing needs aside) have increased Indigenous expenditure.⁴

Per capita expenditure

There are two possible sets of Indigenous population data that per capita expenditure figures can be derived from, and both are problematic.

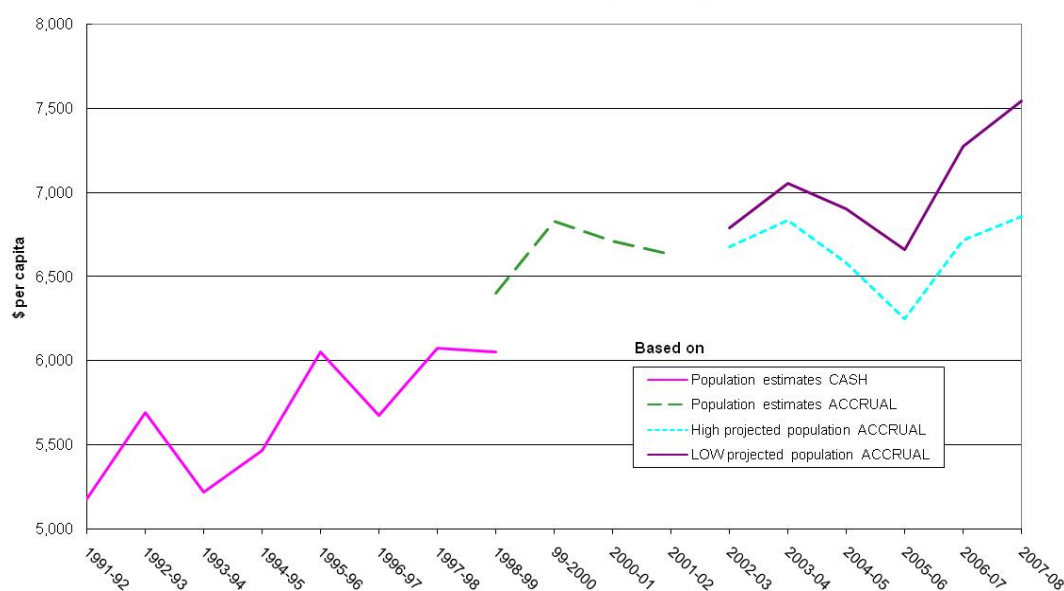
Five-yearly census data covers the whole of the period of Aboriginal affairs expenditure. Census counts, however, are not considered a reliable indicator of the true size of the Indigenous population over this period. The data show periods of low and high population growth which cannot be accounted for by births and deaths only and which may be due in part to variations in the propensity to identify as Indigenous. As such, the per capita

4. For example, Chris Graham in the *National Indigenous Times*, 29 May, 2008, pp.15–16 calculated that Indigenous expenditure as a percentage of total revenue had been generally lower in Howard Government budgets than it had been in Keating Government ones, and argued that ‘... it’s one thing to measure the amount of money allocated to Indigenous affairs. It’s another thing altogether to measure the amount of money available to be allocated to Indigenous affairs.’

expenditure figures which are derived from these data and presented in Table 1 should be used with caution. In particular it is strongly advised that these figures not be used for an analysis of trends over the period.

The Australian Bureau of Statistics (ABS) has used data from the 2001 Census to produce estimates and projections of the Indigenous population which are considered more reliable than the Census figures, but which only cover the period 1991–2009. Furthermore, because of the difficulty in predicting the Indigenous population, both high and low projections were produced from 2002. Regardless of whether high or low projections are used, these data show a rising trend over the period in per capita identifiable Indigenous expenditure, though yearly fluctuations are quite volatile (see Table 2 and Chart 3).

Chart 3 – Real identifiable Commonwealth Indigenous specific expenditure per capita, 1991-92 to 2007-08
Based on ABS estimated and projected Indigenous population



[Table 2: Experimental estimated and projected Indigenous population and real identifiable Commonwealth expenditure on Indigenous Affairs per capita, 1991–92 to 2007–08](#)

Further complicating the task of estimating per capita expenditure is the fact that a lot of Indigenous-specific expenditure has not been simply ‘on top of’ that which Indigenous Australians might benefit from by being Australians. A large proportion of it has substituted for expenditure that would normally be provided via mainstream assistance programs (for example, Community Development Employment Projects for Newstart, Community Housing for housing under the Commonwealth-State Housing agreement, Aboriginal Legal Aid for general legal aid, Aboriginal Medical Services for Medicare supported services). A further amount has been for services which are generally the responsibility of other levels of government (for example, state or local). At the same time, Indigenous Australians have often

utilised mainstream services and benefits at a lower rate than other Australians (for example, Pharmaceutical Benefits and Aged Care).⁵

To produce meaningful per capita expenditure figures, detailed consideration-filled studies of single-portfolio areas need to be conducted. An example of such a study is that cited in footnote 5.

Detailed expenditure tables

The following tables provide the most detailed expenditure data available. The data are drawn from various sources, but most notably those discussed in the sources listed below.

[Table 3: Identifiable Commonwealth Expenditure on Indigenous Affairs, 1968–69 to 1989–90 \(\\$ millions—cash basis\)](#)

[Table 4: Identifiable Commonwealth Expenditure on Indigenous Affairs, 1990–91 to 1999–2000 \(\\$ millions—cash then accrual basis\)](#)

[Table 5: Identifiable Commonwealth Expenditure on Indigenous Affairs, 2000–01 to 2004–05 \(\\$\)](#)

[Table 6: Australian Government Indigenous Expenditure - portfolio level, 2005–06 to 2007–08 \(\\$'000\)](#)

[Table 7: Australian Government Indigenous Expenditure \(AGIE—portfolio level, 2007–08 to 2008–09 \(\\$'000\)](#)

Sources

Compilations of Commonwealth Indigenous-specific expenditure data

Expenditure data for the late 1960s to the late 1980s can be found in Appendix 15 of the Aboriginal Affairs Department, 1988–89 Annual Report, and in J.C.Altman and W.Sanders, *From exclusion to dependence: Aborigines and the welfare state in Australia*, Discussion Paper No. 1/1991, Centre for Aboriginal Economic Policy Research, The Australian National University, Canberra.

In 1991 and 1992 expenditure tables were included in the Budget Related Paper No.7, *Social Justice For Indigenous Australians*, circulated by the then Minister for Aboriginal Affairs, Robert Tickner.

5. See J. Deeble J. Shelton Agar and J. Goss, *Expenditures on health for Aboriginal and Torres Strait Islander peoples 2004–05*, Australian Institute of Health and Welfare, Canberra, February 2008. <http://www.aihw.gov.au/publications/hwe/eohfatsip04-05/eohfatsip04-05.pdf>, accessed on 23 September 2008.

From 1993 and 1995 expenditure tables were included in an annual, but no longer officially Budget Related, *Social Justice For Indigenous Australians*, circulated by the then Minister Robert Tickner.

There was no equivalent compilation released in 1996 or 1997, but in 1998, the then Minister for Aboriginal and Torres Strait Islander Affairs Senator Herron released *Commonwealth Programs For Aboriginal and Torres Strait Islander Peoples 1995–1996*, and *Addressing Priorities in Indigenous Affairs* an expenditure compilation that also included actual expenditures for 1995–96 and 96–97 and estimates for 97–98 and 98–99.

From 1999 to 2002 the Government released at budget time expenditure compilations in the form of a series of Ministerial statements:

A Better Future for Indigenous Australians, Statement by Senator the Honourable John Herron Minister for Aboriginal and Torres Strait Islander Affairs, 11 May 1999.

The Future Together, Indigenous-Specific Measures in the 2000–01 Budget, Statement by Senator the Honourable John Herron Minister for Aboriginal and Torres Strait Islander Affairs, 9 May 2000.

Our Path Together, Statement by the Honourable Philip Ruddock, MP Minister for Immigration and Multicultural and Indigenous Affairs, 22 May 2001. http://www.budget.gov.au/2001-02/minst/html/atsic-13.htm#P297_65117, accessed on 23 September 2008.

Indigenous Affairs 2002–03, Statement by the Honourable Philip Ruddock, MP Minister for Immigration and Multicultural and Indigenous Affairs, Minister Assisting the Prime Minister for Reconciliation, 14 May 2002.

In 2003 the then Minister for Indigenous Affairs, Amanda Vanstone, simply included Indigenous-specific expenditure in a Budget time press release kit. Her 2003 release only included overall expenditure, but the 2004 and 2005 expenditure included more of the detail of the kind that had been in earlier Ministerial statements.

From 2006 there has been no single cross-portfolio compilation of Indigenous-specific Commonwealth expenditures. Instead portfolio specific summaries of ‘Australian Government Indigenous Expenditure’ (AGIE) have been included in nearly all the annual Portfolio Budget Statements.

Indigenous population data

Australian Bureau of Statistics (ABS), [Australian Historical Population Statistics 2006](#) (3105.0.65.001), Table 9, <http://www.abs.gov.au/AUSSTATS/abs@.nsf/DetailsPage/3105.0.65.0012006?OpenDocument>, accessed on 23 September 2008.

ABS, Census 2006: [QuickStats Australia](http://www.censusdata.abs.gov.au/ABSNavigation/prenav/ViewData?subaction=-1&producttype=QuickStats&areacode=0&action=401&collection=Census&textversion=false&breadcrumb=PL&period=2006&javascript=true&navmapdisplayed=true&),
<http://www.censusdata.abs.gov.au/ABSNavigation/prenav/ViewData?subaction=-1&producttype=QuickStats&areacode=0&action=401&collection=Census&textversion=false&breadcrumb=PL&period=2006&javascript=true&navmapdisplayed=true&>, accessed 23 on September 2008.

ABS, [Experimental Estimates and Projections, Indigenous Australians, 1991 to 2009](http://www.abs.gov.au/AUSSTATS/abs@.nsf/DetailsPage/3238.01991%20to%202009?OpenDocument) (3238.0),
<http://www.abs.gov.au/AUSSTATS/abs@.nsf/DetailsPage/3238.01991%20to%202009?OpenDocument>, accessed on 23 September 2008.

GDP and Implicit Price Deflator data

ABS, [National Income, Expenditure and Product, March 2008](http://www.abs.gov.au/AUSSTATS/abs@.nsf/DetailsPage/5206.0Mar%202008?OpenDocument) (5206.0)
<http://www.abs.gov.au/AUSSTATS/abs@.nsf/DetailsPage/5206.0Mar%202008?OpenDocument>, accessed on 23 September 2008.

Australian Government, [Budget Strategy and Outlook 2008–09: Budget Paper No. 1](http://www.budget.gov.au/2008-09/content/bp1/html/index.htm), 13 May 2008,
<http://www.budget.gov.au/2008-09/content/bp1/html/index.htm>, accessed on 23 September 2008.

Total Commonwealth expenditure data

Australian Government, [Budget Strategy and Outlook: Budget Paper No. 1, 1999–2000 and 2008–09 editions](http://www.budget.gov.au/) - Historical Australian Government Data,
<http://www.budget.gov.au/>, accessed on 23 September 2008.

© Copyright Commonwealth of Australia

This work is copyright. Except to the extent of uses permitted by the *Copyright Act 1968*, no person may reproduce or transmit any part of this work by any process without the prior written consent of the Parliamentary Librarian. This requirement does not apply to members of the Parliament of Australia acting in the course of their official duties.

This work has been prepared to support the work of the Australian Parliament using information available at the time of production. The views expressed do not reflect an official position of the Parliamentary Library, nor do they constitute professional legal opinion.

Feedback is welcome and may be provided to: web.library@aph.gov.au. Any concerns or complaints should be directed to the Parliamentary Librarian. Parliamentary Library staff are available to discuss the contents of publications with Senators and Members and their staff. To access this service, clients may contact the author or the Library's Central Entry Point for referral.

Table 1: Identifiable Commonwealth Expenditure on Indigenous Affairs, 1968-69 to 2007-08
Nominal and real dollars; percentages; per capita

	1968-69	1969-70	1970-71	1971-72	1972-73	1973-74	1974-75	1975-76	1976-77	1977-78	1978-79	1979-80	1980-81	1981-82	1982-83	1983-84	1984-85	1985-86	1986-87	1987-88
Indigenous Commonwealth expenditure																				
Nominal expenditure (\$ millions) CASH	10.1	8.9	24.4	29.0	58.4	96.7	158.9	186.1	161.5	173.8	151.6	182.0	219.6	258.8	300.4	396.7	467.2	507.6	584.3	656.2
Real expenditure(a) (\$ millions) CASH	101.6	88.1	227.1	252.6	478.2	692.8	930.3	947.0	732.8	722.4	596.0	654.1	713.9	743.6	775.2	960.0	1,073.4	1,099.0	1,180.5	1,232.1
Total Commonwealth expenditure(b)																				
Nominal expenditure (\$ millions) CASH	5,670	6,131	7,176	7,987	9,120	10,829	15,275	19,876	22,657	25,489	27,753	31,041	35,260	40,394	47,907	55,966	63,639	69,838	75,392	79,440
Indig expend as % of Nominal expend.(%)	0.18	0.15	0.34	0.36	0.64	0.89	1.04	0.94	0.71	0.68	0.55	0.59	0.62	0.64	0.63	0.71	0.73	0.73	0.78	0.83
Gross Domestic Product (GDP)																				
GDP (\$ millions)	32,094	36,162	39,566	43,665	48,856	59,159	69,776	81,710	94,197	102,865	116,364	132,055	149,575	172,449	185,571	209,474	231,312	255,244	279,623	319,157
Nominal expend.as a % of GDP (%)	0.03	0.02	0.06	0.07	0.12	0.16	0.23	0.23	0.17	0.17	0.13	0.14	0.15	0.15	0.16	0.19	0.20	0.20	0.21	0.21
Indigenous population - Census counts(c)																				
Population				115,953					160,915					159,897					227,593	
Real expenditure(a) per capita (\$)				2,179					4,554					4,651					5,187	
	1988-89	1989-90	1990-91	1991-92	1992-93	1993-94	1994-95	1995-96	1996-97	1997-98	1998-99	99-2000	2000-01	2001-02	2002-03	2003-04	2004-05	2005-06	2006-07	2007-08
Indigenous Commonwealth expenditure																				
Nominal expenditure (\$ millions) CASH	777.6	874.1	1,117.9	1,257.3	1,437.8	1,361.8	1,473.2	1,715.1	1,670.5	1,852.3	1,888.0									
Nominal expenditure (\$ millions) ACCRUAL											1,997.1	2,217.8	2,323.4	2,396.8	2,572.6	2,831.1	2,930.1	3,016.3	3,508.0	3,852.2
Real expenditure(a) (\$ millions) CASH	1,284.9	1,416.5	1,724.4	1,901.7	2,144.9	2,014.9	2,162.1	2,454.3	2,353.4	2,576.2	2,619.1									
Real expenditure(a) (\$ millions) ACCRUAL											2,770.5	3,015.2	3,022.9	3,045.6	3,172.7	3,358.5	3,344.8	3,284.7	3,652.2	3,852.2
Total Commonwealth expenditure(b)																				
Nominal expenditure (\$ millions) CASH	82,202	88,882	97,333	104,551	111,484	117,252	122,901	131,182	135,126	134,608	142,159									
Nominal expenditure (\$ millions) ACCRUAL											146,620	155,271	179,823	192,792	201,164	215,277	229,153	241,624	258,521	280,551
Indig expend as % of Nominal expend.(%) CASH	0.95	0.98	1.15	1.20	1.29	1.16	1.20	1.31	1.24	1.38	1.33									
Indig expend as % of Nominal expend.(%) ACCRUAL											1.36	1.43	1.29	1.24	1.28	1.32	1.28	1.25	1.36	1.37
Gross Domestic Product (GDP)																				
GDP (\$ millions)	362,282	397,359	408,842	417,020	438,089	460,124	486,607	518,145	545,698	577,373	607,759	645,057	689,262	735,714	781,675	841,350	897,642	967,454	1,046,063	1,130,443
Nominal expend.as a % of GDP (%) CASH	0.21	0.22	0.27	0.30	0.33	0.30	0.30	0.33	0.31	0.32	0.31									
Nominal expend.as a % of GDP (%) ACCRUAL											0.33	0.34	0.34	0.33	0.33	0.34	0.33	0.31	0.34	0.34
Indigenous population - Census counts(c)																				
Population				265,371					352,970					410,003					455,031	
Real expenditure(a) per capita (\$)				7,166					6,667					7,428					8,026	

Note: Expenditure data are presented on both a CASH and ACCRUAL accounting basis in this table and the two sets of data are not comparable. Expenditure for 1998-99 is available on both a cash and accrual basis and so both are included.

(a) Converted to 2007-08 dollars using the Implicit Price Deflator (IPD) for Non-Farm GDP.

(b) Cash data are Australian Government general government sector payments/outlays and Accrual data are Australian Government general government accrual expenses. Please note that in 2008-09 Treasury revised historical data back to 1998-99 to improve the accuracy and comparability through time. This has resulted in the expenditure data for these years being significantly different from that published in previous Budgets.

(c) The Census counts of Indigenous persons are not considered a reliable indicator of the true size of the Indigenous population over this period of time. The Census counts show periods of unexplained low and high growth (which cannot be accounted for by births and deaths). The ABS has produced estimates and projections of the Indigenous population, but the latest of these only covers the period 1991-2006 (these are used in Table 2). The Census counts, however, are the only Indigenous population data that cover the whole period. It should also be noted that the total Indigenous population as counted in the Census does not necessarily equate with the population intended to be the beneficiaries of Indigenous expenditure.

Sources:

Expenditure: See detailed expenditure tables (3-6) for sources.

Population: ABS, *Australian Historical Population Statistics* (3105.0.65.001), Table 9 AND ABS, Census 2006: QuickStats Australia

GDP and Implicit Price Deflator: ABS, *National Income, Expenditure and Product* (5206.0).

Total Commonwealth expenditure: *Budget Paper No. 1*, 1999-2000 and 2008-09 editions - Historical Australian Government Data.

Table 2: Experimental estimated and projected Indigenous population and real identifiable Commonwealth Expenditure on Indigenous Affairs per capita (a)(b), 1991-92 to 2007-08

	Estimated population											Projections - High					
	1991-92	1992-93	1993-94	1994-95	1995-96	1996-97	1997-98	1998-99	999-2000	2000-01	2001-02	2002-03	2003-04	2004-05	2005-06	2006-07	2007-08
Population	366,943	376,331	385,923	395,343	404,984	414,390	423,424	432,207	441,092	449,868	458,520	474,392	490,739	507,586	524,959	542,886	561,387
Real expenditure per capita (a)(b) (\$) CASH	5,182	5,699	5,221	5,469	6,060	5,679	6,084	6,060									
Real expenditure per capita (a)(b) (\$) ACCRUAL								6,410	6,836	6,720	6,642	6,688	6,844	6,590	6,257	6,727	6,862
												Projections - Low					
Population												466,925	475,412	483,992	492,677	501,479	510,405
Real expenditure per capita (a)(b) (\$) ACCRUAL												6,795	7,064	6,911	6,667	7,283	7,547

Note: Expenditure data are presented on both a CASH and ACCRUAL accounting basis in this table and the two sets of data are not comparable. Expenditure for 1998-99 is available on both a cash and accrual basis and so both are included to enable a longer comparison over time.

Note: The estimates and projections of the Indigenous population presented here are experimental. There is significant volatility in Indigenous census counts and the quality of the data on births, deaths and migration does not support the standard approach to population estimation. Because of this volatility and the unknowns, two main projections of the Indigenous population have been generated and reflect either no unexplained increase in population (low series) or unexplained growth continuing at the rate observed between 1996 and 2001 (high series).

(a) The per capita figures have been calculated by dividing the financial year expenditure by the estimated/projected population at the beginning of each financial year. For example: the per capita amount for 1991-92 is real expenditure in 1991-92 divided by the estimated population as at 30 June 1991; and the 2007-08 figure is calculated by dividing expenditure for that year by the projected population at 30 June 2007.

(b) Real figures have been converted to 2007-08 dollars using the Implicit Price Deflator (IPD) for Non-Farm GDP.

Sources:

Expenditure: See detailed expenditure tables (4-6) for sources.

Population: ABS, *Experimental Estimates and Projections, Indigenous Australians, 1991 to 2009* (3238.0).

GDP and Implicit Price Deflator: ABS, *National Income, Expenditure and Product* (5206.0).

**Table 3: Identifiable Commonwealth Expenditure on Indigenous Affairs
1968–69 to 1989–90 (\$ millions—cash basis)**

	1968–69	1969–70	1970–71	1971–72	1972–73	1973–74	1974–75	1975–76	1976–77	1977–78	1978–79	1979–80	1980–81	1981–82	1982–83	1983–84	1984–85	1985–86	1986–87	1987–88	1988–89	1989–90
Main ATSI Agency (a)																						
Employment	.	1.4	0.4	0.6	4.1	4.8	14.6	5.7	5.3	6.8	6.9	7.0	10.1	10.4	10.4	18.4	27.0	29.9	40.2	65.5	99.0	133.2
Health	0.5	0.8	1.2	2.0	3.0	9.4	11.9	15.9	14.4	16.3	17.5	18.5	19.9	21.6	23.8	28.5	36.5	37.9	38.1	41.1	43.5	43.7
Law and justice	0.7	1.2	2.7	3.7	3.7	3.9	4.2	5.0	5.0	6.5	8.0	10.9	12.1	12.9	13.2	14.7	17.0	19.6
Housing	2.3	2.8	6.1	6.5	14.3	25.0	43.0	43.2	39.9	34.3	39.4	45.7	48.6	42.3	50.2	57.9	68.9	78.5	81.8	90.4	96.7	60.7
Community infrastructure	.	0.3	7.5	8.2	10.5	15.7	16.4	27.5	25.2	26.1	22.5	18.4	13.3	21.7	24.8	32.1	35.2	34.8	49.1	45.5	69.3	78.0
Education (b)	0.8	0.9	2.9	3.0	3.1	4.8	6.0	9.0	8.5	9.2	9.1	8.8	9.9	11.0	12.2	14.0	15.4	15.7	16.0	12.4	-	-
Other	6.4	2.7	2.0	3.6	8.6	17.3	30.1	33.9	23.9	27.7	33.0	37.3	52.6	55.2	68.6	81.0	86.1	85.4	93.6	107.8	124.5	172.9
TOTAL	10.1	8.9	20.0	24.0	44.3	78.3	124.8	138.9	121.0	124.3	132.6	140.8	159.4	168.8	198.0	242.8	281.2	295.1	332.1	377.4	450.0	508.2
Other Cwlth Agencies																						
Employment, Education and Training	148.6	167.3	180.6	190.9	210.6
Housing	59.4	60.0	83.0	111.7	132.5
Other	4.4	24.8	15.1	24.9	22.9
TOTAL	.	.	4.4	5.0	14.1	18.4	34.1	47.2	40.5	49.5	19.0	41.2	60.2	90.0	102.4	153.9	186.0	212.5	252.2	278.8	327.6	366.0
GRAND TOTAL	10.1	8.9	24.4	29.0	58.4	96.7	158.9	186.1	161.5	173.8	151.6	182.0	219.6	258.8	300.4	396.7	467.2	507.6	584.3	656.2	777.6	874.1

(a) Office of Aboriginal Affairs—1967–1971; Department of Aboriginal Affairs—1972–March 1990; Aboriginal and Torres Strait Islander Commission—March to June 1990.

(b) Function absorbed by other agencies from 1988–89.

Sources: Annual Report of the main ATSI agency, various years and, for the 'Other Cwlth Agencies' data up to 1984–85, J. C. Altman and W. Sanders, From exclusion to dependence: Aborigines and the welfare state in Australia, Discussion Paper No. 1/1991, Centre for Aboriginal Economic Policy Research.

**Table 4: Identifiable Commonwealth Expenditure on Indigenous Affairs
1990-91 to 1999-2000 (\$ millions - cash then accrual basis)**

	Cash basis									Accrual basis	
	1990-91	1991-92	1992-93	1993-94	1994-95	1995-96	1996-97	1997-98	1998-99	1998-99	1999-00
Main ATSI agency (a)											
Employment	194.1	204.5	240.8	251.9	278.3	336.3	336.0	360.1	380.1	378.8	423.8
Health	48.6	48.2	61.1	70.6	84.8	(b)
Legal aid	18.6	21.8	29.8	31.6	33.4	34.6	39.6	(c)54.8	(c)63.4	40.9	58.8
Housing	74.5	75.4	(d)37.2	106.0	123.1	143.2	(d)40.8	(d)43.5	(d)38.2	(d)49.7	162.7
Community infrastructure	98.3	99.0	(e)165.6	122.3	94.4	131.7	(e)204.3	(e)236.8	(e)217.2	(e)231.6	127.4
Native Title and Land Rights (f)	.	.	.	12.7	19.4	26.6	43.1	50.2	51.1	51.2	64.6
Other	170.2	160.9	262.4	293.0	308.1	296.1	230.3	228.2	210.3	203.5	197.8
TOTAL	604.4	609.8	796.8	888.1	941.5	968.5	894.1	973.6	960.3	955.8	1,035.1
Other specific ATSI agencies											
ATSI Commercial Develop. Corp. (g)	10.0	10.0	10.0	10.0	10.0	5.4	5.2
Aboriginal Hostels	22.6	23.6	29.6	35.8	29.1	28.9	27.9	28.4	28.6	38.6	43.4
Aboriginal Benefit Reserve(h)	.	37.3	31.1	27.0	29.1	31.3	34.9	27.1	33.1	29.0	32.9
AIATSI	.	5.8	5.8	5.6	5.5	5.7	5.6	5.7	6.0	6.8	7.2
TSRA (i)	21.9	36.3	31.7	34.8	40.3	41.3	45.1
ILC (j)	24.5	25.4	48.3	49.7	23.4	60.0
TOTAL	32.6	76.7	76.5	78.4	85.7	126.7	125.5	144.3	167.7	144.5	193.8
Other Cwlth Agencies											
Employment, Education and Training	305.9	389.5	351.7	279.4	291.9	335.1	355.9	416.3	384.9	418.2	434.8
Housing	139.6	143.5	161.7	93.7	91.0	(b)
Family and Community Services (k)	102.2	102.5	102.7	107.8	128.7	155.3
Health	136.6	144.1	161.2	194.8	188.0	226.6
Other	35.3	37.8	51.1	22.3	63.1	46.0	48.4	54.2	72.5	161.8	172.2
TOTAL	480.9	570.8	564.5	395.4	446.0	619.9	650.9	734.4	760.0	896.8	988.9
GRAND TOTAL	1,117.9	1,257.3	1,437.8	1,361.8	1,473.2	1,715.1	1,670.5	1,852.3	1,888.0	1,997.1	2,217.8

- (a) Estimates.
(b) Functions absorbed by other agency(ies) from this year.
(c) Includes Human Rights.
(d) Excludes Community Housing.
(e) Includes Community Housing.
(f) Does not include ABTA/Aboriginal Benefit Reserve expenditure.
(g) The cash basis figures are the Commonwealth capital injections, but the accrual basis figures are annual agency expenditures. The agency regards itself as self-funding.
(h) Aboriginal Benefit Trust Account until 1996-97. Includes \$0.2 million provided annually under the Ranger Agreement.
(i) Torres Strait Regional Authority.
(j) Indigenous Land Corporation.
(k) Includes \$91.0 million for each year for the Aboriginal Rental Housing Programme previously funded under the Housing portfolio.

Source: ATSIIC, *Annual Report*, various years; Addressing priorities in Indigenous Affairs, Statement by the Minister for Aboriginal and Torres Strait Islander Affairs, 12 May 1998.

**Table 5: Identifiable Commonwealth Expenditure on Indigenous Affairs
2000-01 to 2004-05 (\$)**

Portfolio/Agency/Description	2000-01	2001-02		2002-03		2003-04		2004-5	
	Actual	Budget	Actual	Budget	Actual	Budget	Actual	Budget	Actual
Shared Respons. Agreements and community engage.									19,944,000
Payments - Aboriginal Benefits Account							from ATSI	50,200,000	60,000,000
Ranger Payment							from ATSI	200,000	200,000
Promotion of Cultural Authority							from ATSI	190,503,000	see below
Advancement of Indigenous Rights and Equity							from ATSI	84,465,000	see below
Improvement of Social and Physical Wellbeing (incl. CHIP)							from ATSI	638,094,000	below & EWR
Economic Development (including CDEP)							from ATSI	257,783,000	see below
Capacity Building and Quality Assurance							from ATSI	41,517,000	see below
Home Loans							from ATSI	37,368,000	see below
Community Development and Employment								from above	177,780,000
Community Housing and Infrastructure								from above	50,073,000
Legal and Preventative								from above	23,786,000
Business Development								from above	241,000
Business Development Loans (capital)								from above	886,000
Art, Culture and Language								from above	9,692,000
Broadcasting								from above	7,867,000
Sport and Recreation								from above	5,738,000
Family Violence Prevention								from above	3,195,000
Effective Family Tracing and Reunion								from above	1,121,000
Maintenance and Protection of Indigenous Heritage								from above	1,311,000
Payments from Housing Loan Fund (HOP) - capital								from above	90,000,000
Torres Strait Regional Authority									
Economic Development	3,001,000	3,381,000	2,291,000	2,883,000	2,276,978	2,776,649	2,812,440	2,845,000	3,153,000
Community Development and Training (including CDEP)	26,408,000	28,986,000	28,548,000	29,767,000	30,032,086	30,996,195	31,043,040	32,078,000	32,478,000
Native Title	1,541,000	1,732,000	1,572,000	1,487,000	1,229,589	1,424,163	1,445,200	1,464,000	1,446,000
Housing and Environmental Health Infrastructure	8,733,000	7,913,000	8,097,000	7,977,000	8,775,401	8,036,877	8,055,880	8,147,000	8,311,000
Social, Cultural and Development	5,733,000	6,581,000	7,182,000	7,179,000	6,627,587	6,834,441	6,874,080	6,726,000	7,069,000
Policy and Information	1,307,000	1,214,000	1,693,000	1,426,000	2,252,379	1,486,675	1,535,360	1,374,000	1,793,000
Aboriginal Hostels Limited									
Company Owned and Operated Hostels	33,832,000	35,366,000	36,737,000	36,743,000	36,267,000	33,004,000	33,065,000	33,364,000	to FACS
Community Operated Hostels	9,171,000	9,171,000	7,800,000	7,800,000	9,600,000	8,300,000	8,300,000	8,300,000	to FACS
Aust. Inst. of Aborig. and Torres Strait Islander Studies									
Publications, Products and Archives	2,892,000	4,365,429	4,440,000	4,332,000	see below				
Collections	2,020,000	2,928,103	2,728,000	2,668,000	see below				
Research / Directed Research	1,714,000	2,213,580	3,353,000	3,093,000	3,647,000	3,255,000	3,904,000	3,644,000	to EST
Grants / Dissemination of Information	1,247,000	1,568,888	1,651,000	1,623,000	1,047,000	933,000	862,000	1,131,000	to EST

**Table 5: Identifiable Commonwealth Expenditure on Indigenous Affairs
2000-01 to 2004-05 (\$)**

Portfolio/Agency/Description	2000-01	2001-02		2002-03		2003-04		2004-5	
	Actual	Budget	Actual	Budget	Actual	Budget	Actual	Budget	Actual
Collection Development and Management					5,604,000	4,453,000	5,524,000	4,242,000	to EST
Indigenous Business Australia									
Project Development	2,293,000	2,761,000	3,744,000	2,942,000	3,233,000	3,722,000	4,609,000	4,116,000	to EWR, E&I
Project Management	3,804,000	4,961,000	6,085,000	4,753,000	5,224,000	6,015,000	7,449,000	6,653,000	to EWR, E&I
Indigenous Land Corporation									
Assistance in the acquisition & management of land	65,522,000	63,750,000	65,376,000	66,595,000	59,533,000	66,734,000	77,571,000	77,761,000	87,886,000
<i>Indigenous Affairs Portfolio</i>	<i>1,277,769,000</i>	<i>1,315,717,000</i>	<i>1,320,386,700</i>	<i>1,349,539,000</i>	<i>1,358,440,507</i>	<i>1,423,507,000</i>	<i>1,492,820,293</i>	<i>1,468,790,000</i>	<i>796,432,000</i>
AGRICULTURE, FISHERIES AND FORESTRY PORT.	2000-01	2001-02		2002-03		2003-04		2004-5	
Indigenous Land Management Facilitators Network	575,000								
Rural and Remote Water Supplies	52,000	150,000			50,000	150,000	10,000		
Nth Aust. Quarantine Strat. Aborig.I Communic. Strat. (NT)	100,000	100,000	100,000	100,000	100,000	150,000	129,000	129,000	140,000
Nth Aust. Quarantine Strat. pest and disease monit., surveill.			2,200,000	2,200,000	2,207,000	2,207,000	2,261,693	2,471,254	2530921
Agriculture Advancing Aust. - Indig. public relations camp.			46,929	12,683					
AAA FarmBis - Indig. consultancy and communication camp.			32,858	0					
AAA FarmBis funding for Indig. Land Corporation project			108,109	159,845	34,500	141,300	115,144	0	6,667
AAA FarmBis funding Indig. Sponsorship - Rural Leadership			37,500	0					
Indigenous People in Rural Industries Program					281,000	316,700	391,000	0	128,000
Indigenous Aquaculture Development					25,000	162,500	345,750	365,000	365,000
Indigenous Forestry Development									150,000
<i>Sub-total Agriculture, Fisheries and Forestry Portfolio</i>	<i>727,000</i>	<i>250,000</i>	<i>2,525,396</i>	<i>2,472,528</i>	<i>2,697,500</i>	<i>3,127,500</i>	<i>3,252,587</i>	<i>2,965,254</i>	<i>3,320,588</i>
ATTORNEY-GENERAL'S PORTFOLIO	2000-01	2001-02		2002-03		2003-04		2004-5	
Com. Community Legal Serv. Prog. -Indig. Women's Initiat.	1,084,881	1,084,881	972,954	992,413	994,129	994,129	1,016,995	1,027,365	1,037,335
National Aboriginal Justice Advisory Committee Secretariat	15,000	15,000	12,000	15,000	15,000	15,000	65,000	15,000	15,000
Nat. Crime Prevention - Projects addressing indig. needs	458,141	419,000	469,000	454,000	803,500	10,000	205,000		
Northern Territory Aboriginal Interpreter Service	880,000	630,000	630,000	673,000	936,574	936,574	722,250		900,000
Native Title	4,637,000	5,331,000	5,331,000	5,478,000	5,037,533	5,523,021	5,903,000	5,685,000	5,847,000
Native Title Financial Assist. Payments: States and Territories		11,000,000	500,000	11,000,000		11,000,000	0	11,000,000	0
Legal Aid								from ATSSIS	28,279,205
Law & Justice Advocacy								from ATSSIS	1,268,594
Prevention, Diversion & Rehabilitation								from ATSSIS	3,751,201
Family Violence Legal Services								from ATSSIS	3,008,000
Departmental ex ATSSIS-ATSSIS								from ATSSIS/S	6,176,000

**Table 5: Identifiable Commonwealth Expenditure on Indigenous Affairs
2000-01 to 2004-05 (\$)**

Portfolio/Agency/Description	2000-01	2001-02		2002-03		2003-04		2004-05	
	Actual	Budget	Actual	Budget	Actual	Budget	Actual	Budget	Actual
Indigenous Broadcasting Services								from IMIA	4,992,000
Maint. and Prom. of Indig Arts and Cult., Languages & Records								from IMIA	9,227,000
Sporting Opportunities for Indigenous Peoples								from IMIA	5,554,000
Departmental ex ATSIC-ATSIS								from IMIA	9,066,000
National Council for the Centenary of Federation									
Yeperenye Federation Festival	1,400,000	1,104,000	992,732						
Indigenous Media	120,000	30,000	353,418						
Australia Council									
Aboriginal and Torres Strait Islander Arts Board	4,400,000	4,300,000	4,200,000	4,200,000	4,921,000	5,014,000	5,034,700	5,036,000	4,095,000
Australian Broadcasting Corporation									
Indigenous online/Programmes and Education/Development	2,070,000	2,154,000	2,242,000	2,086,000	2,523,000	2,069,000	2,684,000	2,613,000	2,778,000
Australian Film Commission									
Indigenous Programme	1,102,000	986,000	1,104,000	1,306,000	1,400,000	1,500,000	1,671,000	1,760,000	1,859,000
Australian Film, Television and Radio School									
Indigenous programme initiative	47,000	51,756	55,661	52,000	70,340	73,200	73,500	75,000	68,000
Australian National Maritime Museum									
Saltwater country collection of bark paintings	100,000	100,000	100,000	100,000	153,750	40,000			
Indigenous Acquisitions Fund							15,000	15,000	108,469
ANU research Linkage Grant							10,000	10,000	
Australian Sports Commission									
Indigenous Sports Programme			1,500,000	1,500,000	1,500,000	1,500,000	1,500,000	1,500,000	1,500,000
National Archives of Australia									
Access to Records - Bringing Them Home indexing project	550,000	499,000	499,000	200,000	193,000	200,000	160,000	160,000	60,000
Community Consultation - Aboriginal Advisory Groups			6,584	9,500	6,000	6,000	5,560	6,838	
ScreenSound Australia									
Indig. Policy Implementation and Cadetships/Trainee Prog.	23,000	55,000	52,000	23,000	23,000	46,147			
National Gallery of Australia									
Aboriginal and Torres Strait Islander arts programmes	560,000	777,000	235,000	450,000	201,000	211,000	215,000	215,000	300,500
National Library of Australia									
Bringing Them Home Oral History Project	600,000	300,000	448,000	94,000	93,401				
Guide to materials relating to ATSI people held by NLA	60,000	30,000	30,000	0	102,655				
National Museum of Australia									
Aboriginal and Torres Strait Islander Programme	483,910		450,000	450,000	500,000	550,000	515,000	550,000	649,792
Tracking Kultija	135,646		550,000	0					
National Science and Technology Centre - Questacon									
Shell Questacon Science Circus Aborig. Comm. Visits Prog.	40,058	42,000	51,371	70,000	76,022	154,000			

**Table 5: Identifiable Commonwealth Expenditure on Indigenous Affairs
2000-01 to 2004-05 (\$)**

Portfolio/Agency/Description	2000-01	2001-02		2002-03		2003-04		2004-5	
	Actual	Budget	Actual	Budget	Actual	Budget	Actual	Budget	Actual
Special Broadcasting Service									
Indigenous Radio	129,989	140,000	174,440	175,000	246,733	230,000	240,672	246,000	238,224
Indigenous Television	2,323,300	2,640,000	2,992,906	2,400,000	1,790,850	3,477,500	2,835,000	3,500,000	5,130,000
Indigenous New Media							23,000	20,000	20,000
Telstra									
Remote Community Service Programme	100,000	150,000	150,000	130,000	130,000				
Telstra Countrywide Indig. Strategy				100,000	120,000	500,000			
<i>Sub-total Communications, Info. Techn. and the Arts Portfolio</i>	<i>30,222,898</i>	<i>15,764,006</i>	<i>19,026,362</i>	<i>17,182,896</i>	<i>18,634,442</i>	<i>21,848,335</i>	<i>20,536,643</i>	<i>22,188,788</i>	<i>52,001,293</i>
DEFENCE PORTFOLIO	2000-01	2001-02		2002-03		2003-04		2004-5	
Australian Defence Force Cadets - Indigenous		845,000	0	400,000	75,000	480,000	167,000	250,000	270,000
Aboriginal and Torres Strait Islander Programme	95,000	120,800	55,000	68,000	68,000	83,000	189,000	199,000	127,000
Indig. Liaison Officers and Review into Indig. Heritage Issues					105,000	100,000	91,503	92,000	188,667
ATSIC/Army Community Assistance Project					4,000,000	4,000,000	4,198,643	722,292	3,600,000
<i>Sub-total Defence Portfolio</i>	<i>95,000</i>	<i>965,800</i>	<i>55,000</i>	<i>468,000</i>	<i>4,248,000</i>	<i>4,663,000</i>	<i>4,646,146</i>	<i>1,263,292</i>	<i>4,185,667</i>
EDUCATION, SCIENCE AND TRAINING PORTFOLIO	2000-01	2001-02		2002-03		2003-04		2004-5	
Assistance for School Students with Special Needs	309,298,091	312,101,634							
Infrastructure Funding for the Post Compulsory Ed. System	133,485,833	135,739,271							
Indigenous Education Direct Assistance (IEDA)			63,588,000	64,929,000	64,929,000	66,296,000	66,298,000	67,725,000	34,234,000
Indigenous Education Strategic Assistance Prog. (IESIP)			201,350,000	167,908,000	188,345,000	174,231,000	171,238,000	184,216,000	to below
<i>Indigenous Education (Targeted Assistance) Amendment Act 2004</i>									247,758,000
ABSTUDY Secondary			68,266,000	85,312,000	83,473,000	91,049,000	91,347,000	100,354,000	107,536,000
ABSTUDY Tertiary			55,011,000	74,614,000	73,434,000	77,980,000	80,002,000	87,803,000	92,265,000
ABSTUDY Loan Supplement			23,449,000	23,810,000	47,695,000	28,580,000	28,580,000	13,027,000	12,433,000
Indigenous Support Funding Programme (ISP)			23,719,000	24,263,000	24,263,000	24,900,000	24,879,000	27,072,000	27,108,000
Vocational Education and Training Funding Act			2,936,000	4,000,000	4,000,000	4,000,000	4,000,000	4,000,000	4,124,000
Higher Education reforms						420,000	157,000	558,000	to 2 below
Indigenous Higher Education Advisory Council								from above	522,000
Indigenous Staff Scholarships								from above	170,000
Australian Research Council									
Indigenous Researchers' Development scheme	225,000	229,000	230,000	230,000	230,000	235,000	235,000		323,000
Questacon									
Indigenous Outreach Programs							140,000	140,000	155,000

**Table 5: Identifiable Commonwealth Expenditure on Indigenous Affairs
2000-01 to 2004-05 (\$)**

Portfolio/Agency/Description	2000-01	2001-02		2002-03		2003-04		2004-5	
	Actual	Budget	Actual	Budget	Actual	Budget	Actual	Budget	Actual
Aust. Inst. of ATSI Studies (AIATSIS)									
Research									4,493,000
Dissemination of Information									1,203,000
Collection Development and Management									3,553,000
<i>Sub-total Education, Science and Training Portfolio</i>	<i>443,008,924</i>	<i>448,069,905</i>	<i>438,549,000</i>	<i>445,066,000</i>	<i>486,369,000</i>	<i>467,691,000</i>	<i>466,876,000</i>	<i>484,895,000</i>	<i>535,877,000</i>
EMPLOYMENT AND WORKPLACE RELATIONS PORT.	2000-01	2001-02		2002-03		2003-04		2004-5	
Regional Assistance and Small Business	1,577,213	2,000,000							
Indigenous Related Employment activities	65,485,395	71,822,682	66,829,000	67,241,000	77,789,000	83,410,000	104,879,000	89,967,000	to below
Indigenous Employment Programme (IEP)								from above	92,714,000
Community Develop. Employ. Projects Progr.								from IMIA	383,776,000
Disability Employment services								from FACS	244,602
Job Placement Employment & Training (JPET)								from FACS	332,090
Indigenous Business Australia									
Equity and Investments								from IMIA	6,457,000
Departmental								from IMIA	3,191,000
Business Development (Grants)								from IMIA	10,192,000
Business Loans - capital								from IMIA	27,063,000
Payments from Housing Loan Fund (HOP) - capital								from IMIA	
<i>Sub-total Employment and Workplace Relations Portfolio</i>	<i>67,062,608</i>	<i>73,822,682</i>	<i>66,829,000</i>	<i>67,241,000</i>	<i>77,789,000</i>	<i>83,410,000</i>	<i>104,879,000</i>	<i>89,967,000</i>	<i>523,969,692</i>
ENVIRONMENT AND HERITAGE PORTFOLIO	2000-01	2001-02		2002-03		2003-04		2004-5	
Kakadu Region Social Impact Study	15,000								
Coasts and Clean Seas (Indigenous Prog.)	52,000	54,600	14,310						
Cultural Heritage Projects	183,476	200,000	800,000	800,000	264,481	287,457	837,798	468,125	to below
Indigenous Cultural Assessment								from above	250,000
Aborig. and Torres Strait Isl. Heritage Protection Act 1984	102,300	100,000	200,000	300,000	245,000	130,000	223,982	200,000	200,000
Indigenous Land Management Facilitators Network	1,065,442	1,000,000	1,383,897	1,400,000	1,276,649	1,850,000	1,800,000	1,800,000	1,800,000
Indigenous Protected Areas	1,200,000	1,500,000	1,310,000	0	1,654,250	2,500,000	2,500,000	2,500,000	2,430,000
National Wetlands Programme			54,025						
Waterwatch			28,000	0	25,000				
Envirofund					1,481,212	1,500,000	1,000,000		
Indigenous Advisory Committee					136,900	130,000	70,000	70,000	70,000
Enhancing Indig. Engagement in region natural resource manage.							400,000	400,000	378,000

**Table 5: Identifiable Commonwealth Expenditure on Indigenous Affairs
2000-01 to 2004-05 (\$)**

Portfolio/Agency/Description	2000-01	2001-02		2002-03		2003-04		2004-5	
	Actual	Budget	Actual	Budget	Actual	Budget	Actual	Budget	Actual
COAG ACT Indigenous Trial									0
Maint. and Protect. of Indig. Heritage and the Environ.									3,256,000
Bureau of Meteorology									
National Indigenous Cadetship Project			4,000	8,000	11,469	7,500	32,000	32,000	23,265
Indigenous Climatology Website Project			10,000	11,000	11,000	11,000	11,000	11,000	11,000
Cross Cultural Training - Indigenous			7,500	4,500	4,500	4,500	2,300	4,500	4,500
Australian Greenhouse Office									
Renewable Remote Power Generation Programme			900,000	3,300,000					
Indig. Renewable Energy Services Project (Bushlight)			2,000,000	2,000,000	800,000	2,000,000	2,000,000	2,000,000	2,000,000
Great Barrier Reef Marine Park Authority									
Indigenous Programmes	512,000	580,000	500,000	646,000	466,985	500,000	480,000	500,000	436,000
<i>Sub-total Environment and Heritage Portfolio</i>	<i>3,130,218</i>	<i>3,434,600</i>	<i>7,211,732</i>	<i>8,469,500</i>	<i>6,377,446</i>	<i>8,920,457</i>	<i>9,357,080</i>	<i>7,985,625</i>	<i>10,858,765</i>
FAMILY AND COMMUNITY SERVICES PORTFOLIO	2000-01	2001-02		2002-03		2003-04		2004-5	
Indigenous Family Relationship Services	4,860,000	5,290,000	5,767,821	5,450,569	to below				
Indigenous Parenting and Family Well Being				from above	2,084,000	1,869,000	1,807,000	1,912,000	1,903,000
Family Relationships Services Prog. - Indig. component				from above	269,061	269,061	275,250	280,755	708,000
Com. Financial Counselling Program -Indig. component				from above	372,483	372,483	410,931	417,992	
Early Intervention & Parenting - Indigenous component				from above	230,400	285,985	315,000		429,000
Aboriginal and Islander Child Care Agencies				from above	3,041,105	3,041,105	3,197,652	2,911,626	3,581,000
Emergency Relief - Indigenous component				from above	2,244,160	2,244,160	2,311,601	2,371,760	2,349,000
Secretariat National Aboriginal and Islander Child Care				from above	149,260	149,260	393,812	179,588	
Centrelink - Indigenous services	27,064,000	27,100,000	38,081,600	38,111,000	46,584,000	48,178,400	85,365,600	85,822,000	to FA, HumSer.
Indigenous Child Care Services	25,500,000	25,500,000	25,675,000	26,418,000	21,000,000	22,000,000	20,500,000	21,000,000	
Aboriginal Rental Housing Programme	91,000,000	91,000,000	91,000,000	100,000,000	100,000,000	101,000,000	101,000,000	101,000,000	102,072,000
Supported Accom. Assistance Prog Indig.component	23,200,000	23,800,000	28,888,000	29,495,000	17,893,000	18,305,000	17,905,000	18,264,000	19,930,000
Indigenous Housing Independent Assessments		500,000	500,000	2,500,000	2,500,500	3,000,000	3,000,000	3,000,000	3,000,000
Stronger Families and Communities Strategy			3,866,000	6,510,000	8,115,971	10,470,980	10,092,576	11,000,000	7,215,000
Innovative and Collaborative Youth Servicing Projects			367,000	857,000	918,539	0			
First Australians Business			175,000	140,000	140,000	70,000	63,637	0	
Supporting Families Coping with Illicit Drug Use					967,000	600,000	760,000	760,000	
Reconnect					1,528,486	2,616,746	2,784,158	3,463,448	
Youth Activity Services/Family Liaison Workers					608,531	631,340	646,897	783,140	460,000
National Indigenous Youth Leadership Group					175,000		100,000	100,000	140,000
FaCS Indigenous Policy and North Australia Office					3,869,067	4,200,000	4,602,612	4,602,612	1,843,000

**Table 5: Identifiable Commonwealth Expenditure on Indigenous Affairs
2000-01 to 2004-05 (\$)**

Portfolio/Agency/Description	2000-01	2001-02		2002-03		2003-04		2004-5	
	Actual	Budget	Actual	Budget	Actual	Budget	Actual	Budget	Actual
Indigenous research					222,000	803,000	803,427	1,307,327	1,467,000
Personal Support Program Indigenous pilots					60,000	350,000	155,000	311,000	68,000
Family and Community Networks Initiative					195,000	1,776,000	1,776,000	1,829,000	2,324,000
Disability Employment Services					3,400,777	3,400,777	3,960,922	3,960,922	121,000
Disability Targeted Support Services								from above	137,000
Disabilities - Buddies Program					140,000	260,000	262,640	262,640	30,000
Mentor Marketplace								from ??	172,000
Indigenous Disability Advocacy Service					265,657	278,000	0	278,000	479,000
Nat. Priorities Funds - Nat. Homeless. Strat. - Indig.comp.					311,499	45,047	128,488	57,500	50,000
Personal Support Program Remote Service Delivery Project							60,116	0	
Indigenous Financial Management							-PMC, FIM	1,100,000	1,720,000
Indigenous Women's Activities								from PMC	246,000
Multifunctional Aboriginal Child Care Services (MACS)									11,568,000
Flexible / multipurpose centre-based services									5,009,000
Mobile services / toy libraries									1,164,000
Outside School Hours Care / Vacation Care Services									4,332,000
Indigenous playgroups									1,392,000
Indigenous JET creches									1,538,000
Reconnect									2,893,000
Community Business Partnership									77,000
Transition to Independent Living Arrangements (TILA)									219,000
Departmental: Healthy Indigenous Housing - Continuation									
Community Housing and Infrastructure								from IMIA	205,981,000
Family Violence Regional Activities Program								from IMIA	2,936,000
Family Violence Partnership Program								from IMIA	300,000
Departmental ex ATSIC-ATSIS								from IMIA	21,137,000
Job Placement, Employment & Training (JPET)								from IMIA	310,000
less Revenue received from other agencies									-9,185,000
Aboriginal Hostels Limited									
Company Owned and Operated Hostels								from IMIA	33,364,000
Community Operated Hostels								from IMIA	8,300,000
<i>Sub-total Family and Community Services Portfolio</i>	<i>171,624,000</i>	<i>173,190,000</i>	<i>194,320,421</i>	<i>209,481,569</i>	<i>217,285,496</i>	<i>226,216,344</i>	<i>262,678,319</i>	<i>266,975,310</i>	<i>441,779,000</i>
FINANCE AND ADMINISTRATION PORTFOLIO	2000-01	2001-02		2002-03		2003-04		2004-5	
Office of Evaluation and Audit								from IMIA	4,164,000

**Table 5: Identifiable Commonwealth Expenditure on Indigenous Affairs
2000-01 to 2004-05 (\$)**

Portfolio/Agency/Description	2000-01	2001-02		2002-03		2003-04		2004-5	
	Actual	Budget	Actual	Budget	Actual	Budget	Actual	Budget	Actual
Australian Electoral Commission									
2001 Fed. Election Indig. Enrolment and Info. Prog.		250,000	240,000	0					
School and Community Programme	20,000	20,000	8,000	20,000	8,550	9,400	61,604	432,348	to below
Election Indigenous Program								from above	432,348
Non-Election Indigenous Program									0
Commonwealth Grants Commission									
Dev. Meas. of Rel. Disadv. to Target Res. to Indig. Austr.	4,000,000								
Department of Human Services									
Centrelink - Indigenous Services								from FACS	54,500,000
Health Insurance Commission									3,533,500
<i>Sub-total Finance and Administration Portfolio</i>	<i>4,020,000</i>	<i>270,000</i>	<i>248,000</i>	<i>20,000</i>	<i>8,550</i>	<i>9,400</i>	<i>61,604</i>	<i>432,348</i>	<i>62,629,848</i>
FOREIGN AFFAIRS AND TRADE PORTFOLIO									
Aboriginal and Torres Strait Islander Cultural Programme	161,500	162,000	150,000	150,000	220,000	200,000	237,800	170,000	200,000
Indigen. Recruitment (incl. cadetships and training)	74,290	44,625	20,957	37,629	37,288	50,319	130,869	112,068	48,308
AusAid									
Indigenous Cadetships / Scholarships	50,000	60,000	46,000	65,000	45,000	48,000	8,912	30,000	5,000
Austrade									
Indigenous Cadetships	16,862		11,000	30,500	38,193	40,000	0	34,000	0
Indigenous Exporters Program			9,600	25,000	20,000	20,000	73,179	70,000	67,326
<i>Sub-total Foreign Affairs and Trade Portfolio</i>	<i>302,652</i>	<i>266,625</i>	<i>237,557</i>	<i>308,129</i>	<i>360,481</i>	<i>358,319</i>	<i>450,760</i>	<i>416,068</i>	<i>320,634</i>
HEALTH AND AGEING PORTFOLIO									
Pathology Services to Rural and Remote NT	3,090,780	3,557,070	581,583	0					
Infrastr. to Supp. High Quality Health Care Services	21,982,000	28,586,000	16,535,000	15,117,000	14,954,000	15,471,000			
Alternative Arrangements for the Delivery of Pharm. Benefits	6,500,000	9,000,000	11,318,000	12,375,000	15,016,000	16,050,000	16,500,000	19,000,000	19,874,508
General Practice Services to rural and remote NT	845,100	537,300	625,000	588,000			618,000	650,000	600,000
Section 19(2) exemptions for AMS under the HI Act	11,593,118	12,056,842	12,100,000	12,930,000	12,930,000	14,000,000	17,400,000	20,362,240	17,835,000
Aged Care Strategy for ATSI - Residential Care	8,521,000	11,150,000	11,150,000	13,086,000	13,459,000	14,221,000	14,221,000	13,796,000	15,860,000
Indigenous Coordinated Care Trials	263,000		2,248,000	2,715,000	8,057,000	13,675,584	12,999,830	13,827,494	13,847,249
Aust. Hearing Special Prog. for Indig. Aust.	650,000	650,000	650,000	665,000	680,000	760,000	800,000	820,000	2,000,000
Health services in ATSI Communities	160,682,000	169,006,000	174,323,000	194,185,000	193,280,000	202,301,000	232,834,064	220,855,031	292,330,000
ATSI Primary Health Care Access Programme	17,035,000	22,707,000	20,494,000	32,754,000	33,519,000	53,158,000	50,561,140	73,101,271	to above
ATSIC/Army Community Assistance Programme	3,902,000	3,792,000	3,662,000	4,362,000	4,530,000	4,557,000	4,285,000	4,463,665	4,277,000

**Table 5: Identifiable Commonwealth Expenditure on Indigenous Affairs
2000-01 to 2004-05 (\$)**

Portfolio/Agency/Description	2000-01	2001-02		2002-03		2003-04		2004-5	
	Actual	Budget	Actual	Budget	Actual	Budget	Actual	Budget	Actual
Reconciliation	9,103,640								
Partnerships Against Domestic Violence - Indig. grants	2,000,000	2,000,000	3,320,000	1,442,718	902,000	1,265,000	807,000	0	
Mentoring			187,300	100,000	113,000	117,000	174,000	0	
Indigenous Women in Leadership			50,000	76,000	110,300	76,000	300,000	200,000	
Family Income Management							850,000	to FACS, IFM	
Indigenous Women's Activities									36,000
Indigenous Functions - New Arrangements								from IMIA	695,000
Australian Public Service Commission (APSC) Ind. Empl.								from IMIA	1,501,000
<i>Sub-total Prime Minister and Cabinet Portfolio</i>	<i>15,493,590</i>	<i>2,000,000</i>	<i>3,557,300</i>	<i>1,618,718</i>	<i>1,125,300</i>	<i>1,458,000</i>	<i>2,131,000</i>	<i>200,000</i>	<i>2,232,000</i>
TRANSPORT AND REGIONAL SERVICES PORTFOLIO	2000-01	2001-02		2002-03		2003-04		2004-5	
Local Govern. Incentive Prog. - Aborig. Councils	284,300								
Safety Inspect. Remote Aerodromes Indig. Com. Nth Aust.	160,000	160,000	124,312	171,809	171,809	171,809	171,809	171,809	166,909
Wreck Bay Aboriginal Community Council	235,900	495,900	486,000	654,000	449,133	242,000	243,578	255,000	
Local Government Financial Assistance Grants	16,811,419	17,366,196	19,407,465	20,104,193	21,139,516	21,917,450	25,228,665	25,909,412	
Rural Transaction Centres					401,313				
Regional Solutions Programme					801,701				
Regional Assistance Programmes					1,125,051				
Sustainable Regions						900,000	1,114,917	1,208,383	
Remote Air Services Subsidy Scheme							2,600,000	1,794,000	
Roads to Recovery Programme							300,000	250,000	
Regional Partnership Programme							2,710,410		
Regional Partnerships Programme - Crocfest									67,273
COAG Western Australia Indigenous Trial									1,147,000
<i>Sub-total Transport and Regional Services Portfolio</i>	<i>17,491,619</i>	<i>18,022,096</i>	<i>20,017,777</i>	<i>20,930,002</i>	<i>24,088,523</i>	<i>23,231,259</i>	<i>32,369,379</i>	<i>29,588,604</i>	<i>1,381,182</i>
TREASURY PORTFOLIO	2000-01	2001-02		2002-03		2003-04		2004-5	
GST Start-up Assistance Office - Educ. & Training Material	2,699,730								
Productivity Commission									
Developing Reporting key indicators of Indig. disadvantage						558,000	735,000	565,000	728,000
Australian Bureau of Statistics									
Developing, Collecting and Reporting Indigenous Statistics	4,379,000	6,166,000	6,085,000	7,009,000	7,227,000	4,704,000	5,547,000	7,121,000	
Australian Competition and Consumer Commission									
Information for Aboriginal and Torres Strait Islander peoples	190,000	110,000	110,000		110,000		153,893	57,500	

**Table 5: Identifiable Commonwealth Expenditure on Indigenous Affairs
2000-01 to 2004-05 (\$)**

Portfolio/Agency/Description	2000-01	2001-02		2002-03		2003-04		2004-5	
	Actual	Budget	Actual	Budget	Actual	Budget	Actual	Budget	Actual
Australian Taxation Office									
Indigenous Reference Centre	318,500	322,000	60,000	45,490	42,000	42,000	113,400	118,600	333,320
The New Tax Reform Business Education Centre	528,876	528,876	174,865	810,200	52,000	300,000	105,000	120,000	139,790
GST Field Compliance and Advisory Work 5									1,102,500
<i>Sub-total Treasury Portfolio</i>	<i>8,116,106</i>	<i>7,126,876</i>	<i>6,429,865</i>	<i>7,864,690</i>	<i>7,431,000</i>	<i>5,604,000</i>	<i>6,654,293</i>	<i>7,982,100</i>	<i>2,303,610</i>
	2000-01	2001-02		2002-03		2003-04		2004-5	
Total from above italics portfolio sub-totals (1)	2,323,386,622	2,390,827,533	2,396,787,939	2,500,550,381	2,572,561,036	2,691,837,328	2,831,091,530	2,840,554,322	2,930,144,312
Total as given in Ministerial Statement (2)	2,323,560,412	2,390,867,733	2,396,787,939	2,500,550,381	2,572,561,036	2,691,837,328	2,831,091,530	2,918,315,322	2,930,144,312
Difference between totals from italics and statements (3)	173,790	40,200	0	0	0	0	0	77,761,000	0

1) The sum of the portfolio sub-totals of the data as keyed above and checked by the compiler of this table.

2) The total as presented in the Minister's statements.

3) The compilers totals deviated from those in the Minister's statement at only 3 points. The first two deviations are relatively minor and probably result from a miscalculation within the Minister's statement. The third and more significant one probably resulted from the double counting in the Minister's statement of the \$77,761,000 spent on the Indigenous Land Corporation.

Source: Annual Ministerial Budget Statements.

**Table 6: Australian Government Indigenous Expenditure (AGIE) - portfolio level
2005-06 to 2007-08 (\$'000)**

Portfolio/Agency/Outcome	May 2006 PBS		May 2007 PBS	
	2005-06 actual	2006-07 budget	2006-07 actual	2007-08 budget
Agriculture Fisheries and Forestry Portfolio				
Department of Agriculture, Fisheries and Forestry				
Outcome 1: More sustainable, competitive and profitable Australian agricultural, fodd, fisheries and forestry industries	659	931	980	1,064
<i>Total Agriculture Fisheries and Forestry Portfolio</i>	<i>659</i>	<i>931</i>	<i>980</i>	<i>1,064</i>
Attorney-General's Portfolio				
Attorney General's Department				
Outcome 1: An equitable and accessible system of federal civil justice	82,043	99,116	88,920	100,735
Australian Crime Commission				
Outcome 1: Enhanced Australian law enforcement capacity			5,038	4,450
Australian Customs Service				
Outcome 1: Effective border management that, with minimal disruption to legitimate trade and travel, prevents illegal movement across the border, raises revenue and provides trade statistics	555	555	1,387	617
Australian Federal Police				
Outcome 1: The investigation and prevention of crime against the Commonwealth and protection of Commonwealth interests in Australia and overseas	252	301	151	675
Outcome 2: policing activity creates a safe and secure environment in the ACT	145	94	94	102
<i>Total Australian Federal Police</i>	<i>397</i>	<i>395</i>	<i>245</i>	<i>777</i>
Family Court of Australia				
Outcome 1: Serving the interests of the Australian community by ensuring families and children in need can access effective high quality services	560	581	516	526
Federal Court of Australia				
Outcome 1: Through its jurisdiction, the Court will apply and uphold the rule of law to deliver remedies and enforce rights and in so doing, contribute to the social and economic development and wellbeing of all Australians	9,661	9,769	9,769	9,870
Human Rights and Equal Opportunity Commission				
Outcome 1: An Australian society in which the human rights of all are respected, protected and promoted	1,006	994	1,080	1,215
National Native Tital tribunal				
Outcome 1: Resolution of native tital issues over land and waters	32,227	32,881	32,881	33,221
<i>Total Attorney General's Portfolio</i>	<i>126,449</i>	<i>144,291</i>	<i>139,836</i>	<i>151,411</i>
Communications, Information Technology, and the Arts Portfolio				
Department of Communications, Information Technology, and the Arts				
Outcome 1:	27,274	28,483	27,281	27,938
Outcome 2:	14,464	14,816	11,956	12,451
Outcome 3:	19,507	41,675	20,873	45,764
<i>Total Department of CITA</i>	<i>61,245</i>	<i>84,974</i>	<i>60,110</i>	<i>86,153</i>
Australia Council				
Outcome 1:	5,600	5,700	4,369	3,629
Australian Broadcasting Corporation				
Outcome 1:	2,601	2,659	2,560	2,600
Australian Film Commission				
Outcome 1:	2,791	2,555	3,236	3,646
Australian Film Television and Radio School				
Outcome 1:	117	73	119	79
Australian National Maritime Museum				
Outcome 1:	90	90	33	15
Australian Sports Commission				
Outcome 1:	1,500	1,500	1,500	1,500
National Gallery of Australia				
Outcome 1:	530	510	491	647
National Museum of Australia				
Outcome 1:	870	1,002	1,128	1,532
Special Broadcasting Service				
Outcome 1:	3,961	4,391	1,665	1,704
<i>Total CITA Portfolio</i>	<i>79,305</i>	<i>103,454</i>	<i>75,212</i>	<i>101,505</i>
Education Science and Technology Portfolio				
Department of Education Science and Technology				
Outcome 1: (Schools in 2006)	473,192	461,358		
Outcome 2: (Post-school in 2006)	110,027	108,860		
Outcome 3: (Research in 2006)	535	451		
<i>Total Department of Education Science and Technology</i>	<i>583,754</i>	<i>570,669</i>	<i>587,983</i>	<i>580,751</i>

**Table 6: Australian Government Indigenous Expenditure (AGIE) - portfolio level
2005-06 to 2007-08 (\$'000)**

Portfolio/Agency/Outcome	May 2006 PBS		May 2007 PBS	
	2005-06 actual	2006-07 budget	2006-07 actual	2007-08 budget
Australian Institute of Aboriginal and Torres Strait Islander Studies	13,227	14,028	14,201	15,071
Australian Research Council	402	400	590	626
Total Employment, Science and Technology Portfolio	597,383	585,097	602,774	596,448
Employment and Workplace Relations Portfolio				
Department of Employment and Workplace Relations				
Outcome 1:	107,530	139,760	100,128	146,175
Outcome 3:	562,433	608,469	556,545	542,404
<i>Total Department of Employment and Workplace Relations</i>	<i>669,963</i>	<i>748,229</i>	<i>656,673</i>	<i>688,579</i>
Indigenous Business Australia				
Outcome 1:	40,925	89,876	238,309	199,287
Total Employment and Workplace Relations Portfolio	710,888	838,105	894,982	887,866
Environment and Heritage Portfolio				
Department of Environment and Heritage				
Outcome 1:	10,000	10,688	11,545	18,885
Bureau of Meteorology				
Outcome 1:	27	75	76	46
Great Barrier Reef Marine Park Authority				
Outcome 1:	1,479	1,500	1,456	1,500
Total Environment and Heritage Portfolio	11,506	12,263	13,077	20,431
Families, Community Services and Indigenous Services Portfolio				
Department of Families, Community Services and Indigenous Services				
Outcome 1: (Indigenous services)	439,544	601,353	753,373	833,942
Outcome 2:	4,095	4,071	4,906	4,982
Outcome 3:	36,809	37,996	36,970	72,406
Outcome 4:	122,995	124,196	129,162	132,168
<i>Total Department of FaCSIA</i>	<i>603,443</i>	<i>767,616</i>	<i>924,411</i>	<i>1,043,498</i>
Aboriginal Hostels Limited				
Outcome 1:	47,416	44,570	44,898	61,686
Indigenous Land Corporation				
Outcome 1:	56,358	40,517	128,528	21,176
Torres Strait Regional Authority				
Outcome 1:	55,549	56,833	58,498	54,178
Total Families, Community Services and Indigenous Services Portfolio	762,766	909,536	1,156,335	1,180,538
Finance and Administration Portfolio				
Finance				
Outcome 1:	4,819	4,996	5,084	5,161
Australian Electoral Commission				
Outcome 1: (Electoral roll)	136	145	287	259
Outcome 2: (?)			104	104
Outcome 3: (Education)	26	27	118	118
<i>Total Australian Electoral Commission.</i>	<i>162</i>	<i>172</i>	<i>509</i>	<i>481</i>
Total Finance and Administration Portfolio	4,981	5,168	5,593	5,642
Foreign Affairs and Trade Portfolio				
Department of Foreign Affairs and Trade				
Outcome 1:	42	39	151	177
Outcome 3:	169	169	170	168
<i>Total Department of Foreign Affairs and Trade</i>	<i>211</i>	<i>208</i>	<i>321</i>	<i>345</i>
Australian Trade Commission				
	84	86	94	107
Total Foreign Affairs and Trade Portfolio	295	294	415	452
Health and Ageing Portfolio				
Department of Health and Ageing				
Outcome 1: Population Health	8,225	8,240	16,044	14,647
Outcome 2: Access to Pharmaceutical Services	24,842	28,074	28,074	31,306
Outcome 3: Access to Medical Services	21,554	23,445	26,274	31,923
Outcome 4: Aged Care and Population Ageing	17,391	17,884	19,436	21,502
Outcome 5: Primary Care	746	471	465	
Outcome 6: Rural Health	5,782	8,070	9,700	9,802
Outcome 7: Hearing Services	4,109	4,609	4,609	4,758
Outcome 8: Indigenous Health	387,720	425,523	435,872	504,270
Outcome 10: Health System Capacity and Quality	1,008	808	20	20
Outcome 11: Mental Health	1,189	1,320	1,320	700
Outcome 14: Health and Medical Research	18,315	17,276		
Outcome 15 in 2006 Outcome 14 in 2007: Biosecurity and Emergency Response	616	320	842	611
Total Health and Ageing Portfolio	491,497	536,040	542,657	619,538

**Table 6: Australian Government Indigenous Expenditure (AGIE) - portfolio level
2005-06 to 2007-08 (\$'000)**

Portfolio/Agency/Outcome	May 2006 PBS		May 2007 PBS	
	2005-06 actual	2006-07 budget	2006-07 actual	2007-08 budget
Human Services Portfolio				
Centrelink				
Outcome 1:	56,677	57,232	63,387	62,333
Medicare Australia				
Outcome 1:	3,372	1,552	1,551	1,592
Department of Human Services				
Outcome 1:				454
Total Human Services Portfolio	60,049	58,784	64,938	64,379
Immigration and Multicultural Affairs Portfolio				
Department of Immigration and Multicultural Affairs				
Outcome 3: (Innovative whole of government policy on Indigenous Affairs)	160,698	to FaCS		
Total Immigration and Multicultural Affairs Portfolio	160,698	to FaCS		
Industry Tourism and Resources Portfolio				
Department of Industry Tourism and Resources				
Outcome 1:				
Business Ready Program for Indigenous Tourism	1,010	1,395	1,300	1,138
Indigenous Communities/Mining Industry Working in Partnership Program	427	500	500	470
Indigenous graduate recruitment, traineeships and cadetships	63	107	36	52
	1,500	2,002	1,836	1,660
Outcome 2: Indigenous graduate recruitment, traineeships and cadetships	16	26		
<i>Total Department of Industry Tourism and Resources</i>	<i>1,516</i>	<i>2,028</i>	<i>1,836</i>	<i>1,660</i>
Tourism Australia				
Outcome 1				
Tourism Niche Market Development (Indigenous Program Delivery)	300	300		
Total Industry Tourism and Resources Portfolio	1,816	2,328	1,836	1,660
Prime Minister and Cabinet Portfolio				
Department of Prime Minister and Cabinet				
Outcome 1:	702	715	926	736
Australian Public Service Commission				
Outcome 1:	2,871	4,338	4,290	4,663
Total PM&C Portfolio	3,573	5,053	5,216	5,399
Transport and Regional Services Portfolio				
Department of Transport and Regional Services				
Outcome 2: Assisting regions to develop their own futures	1,880	1,923	1,501	1,182
Total Transport and Regional Services Portfolio	1,880	1,923	1,501	1,182
Treasury Portfolio				
Australian Taxation Office				
	1,937	1,752	1,953	1,959
Productivity Commission				
	578	590	724	729
Total Treasury Portfolio	2,515	2,342	2,677	2,688
Total Australian Government Indigenous Expenditure	3,016,260	3,205,609	3,508,029	3,640,203

Note: These figures are drawn from the Australian Government Indigenous Expenditure (AGIE) tables within the 2006 and 2007 Portfolio Budget Statements (PBS). Names for outcomes are only included when they are used in the AGIE tables. On the few occasions when some paraphrasing of an outcome seems appropriate, these have been included in brackets.

It should also be noted that although the 2006-07 PBS for the Defense Portfolio (p.44) notes the existence of several indigenous programs funded from within the defence budget (to do with recruitment, army community assistance, cadets and Indigenous liaison officers) it did not include an AGIE table or separate figures for these - so no figures have been included in this table nor in the total of AGIE.

**Table 7: Australian Government Indigenous Expenditure (AGIE) - portfolio level
2007-08 to 2008-09 (\$'000)**

Portfolio/Agency/Outcome	May 2008 PBS	
	2007-08 actual	2008-09 budget
Agriculture Fisheries and Forestry Portfolio		
Department of Agriculture, Fisheries and Forestry		
Outcome: Australian agricultural, fisheries, food and forestry industries that are based on sustainable management of and access to natural resources, are more competitive, self-reliant and innovative, have increased access to markets, are protected from diseases and are underpinned by scientific advice and economic research.	697	342
Fisheries research and Development Corporation		
Outcome: The natural resources on which the fishing industry (commercial, Indigenous and recreational sectors) depends are used sustainably and for the benefit of all stakeholders.	220	440
Total Agriculture Fisheries and Forestry Portfolio	917	782
Attorney-General's Portfolio		
Total Attorney General's Portfolio	123,252	121,024
Broadband, Communications and the Digital Economy Portfolio		
Department of Broadband, Communications and the Digital Economy		
Outcome 1:	3,125	12,546
Total Broadband, Communications and the Digital Economy Portfolio	3,125	12,546
Defence Portfolio		
Department of Defence		
Indigenous Recruitment and Retention Strategy	not specified	490
Australian Defence Force Cadets – Indigenous Participation Program	not specified	330
Army Aboriginal Community Assistance Program	not specified	3,011
Total Defence Portfolio	not specified	3,831
Education, Employment and Workplace Relations Portfolio		
Department of Education, Employment and Workplace Relations		
Outcome 1:	38,772	38,772
Outcome 2:	479,166	484,988
Outcome 3:	93,052	93,736
Outcome 4:	8,448	8,508
Outcome 7:	194,289	175,982
Total Education, Employment and Workplace Relations Portfolio	813,727	801,986
Environment, Water Heritage and the Arts Portfolio		
Outcome 1: The environment, especially those aspects that are matters of national significance, is protected and conserved	19,922	15,004
Outcome 4: Development of a rich and stimulating cultural sector for all Australians	1,310	317
Total Environment, Water Heritage and the Arts Portfolio	21,232	15,321
Families, Housing, Community Services and Indigenous Affairs Portfolio		
Department of Families, Housing, Community Services and Indigenous Affairs		
Outcome 1	1,478,400	1,807,007
Outcome 2	324	366
Outcome 3	57,728	53,137
Outcome 4	198,178	9,298
Aboriginal Hostels Limited (AHL)		
Outcome 1	61,431	53,002
Indigenous Business Australia (IBA)		
Outcome 1:	316,947	136,933
Indigenous Land Corporation (ILC)		
Outcome 1:	13,542	48,199
Torres Strait Regional Authority (TSRA)		
Outcome 1:	53,425	53,789
Total Families, Housing, Community Services and Indigenous Affairs Portfolio	2,179,975	2,161,731
Finance and Deregulation Portfolio		
Finance		
Outcome 1:	5,178	5,307
Total Finance and Deregulation Portfolio	5,178	5,307
Foreign Affairs and Trade Portfolio		
Department of Foreign Affairs and Trade		
Outcome 1:	301	395
Outcome 3:	166	170
Total Foreign Affairs and Trade Portfolio	467	565
Health and Ageing Portfolio		
Department of Health and Ageing		
Outcome 1: Population Health	16,560	16,782
Outcome 2: Pharmaceutical Services	31,306	34,538
Outcome 3: Medical Services	31,390	39,643

**Table 7: Australian Government Indigenous Expenditure (AGIE) - portfolio level
2007-08 to 2008-09 (\$'000)**

Portfolio/Agency/Outcome	May 2008 PBS	
	2007-08 actual	2008-09 budget
Outcome 4: Aged Care and Population Ageing	21,770	23,807
Outcome 5: Primary Care	698	-
Outcome 6: Rural Health	10,823	-
Outcome 7: Hearing Services	4,914	5,017
Outcome 8: Indigenous Health	558,150	591,951
Outcome 11: Mental Health	1,370	1,303
Outcome 14: Biosecurity and Emergency Response	628	378
Outcome 15: Development of a Stronger and Internationally Competitive Australian Sports Sector and Encouragement of Greater Participation in Sport by All Australians	12,698	12,869
Total Health and Ageing Portfolio	690,309	726,287
Human Services Portfolio		
Department of Human Services		
Outcome 1:	10,058	4,108
Total Human Services Portfolio	10,058	4,108
Immigration and Citizenship Portfolio		
Total Immigration and Citizenship Portfolio	<i>not specified</i>	<i>none</i>
Infrastructure, Transport, Regional Development and Local Government Portfolio		
Department of Infrastructure, Transport, Regional Development and Local Government		
Outcome 3: Assisting regions and local government to develop and manage their own futures	1,021	357
Total Infrastructure, Transport, Regional Development and Local Government Portfolio	1,021	357
Innovation, Industry, Science and Research Portfolio		
Department of Innovation, Industry, Science and Research		
Outcome 1: Indigenous graduate recruitment, traineeships and cadetships	38	54
Outcome 3: Questacon - Indigenous Outreach Programmes	119	-
Total Innovation, Industry, Science and Research Portfolio	157	54
Prime Minister and Cabinet Portfolio		
Department of Prime Minister and Cabinet		
Outcome 1:	1,336	736
Total PM&C Portfolio	1,336	736
Resources, Energy and Tourism Portfolio		
Department of Resources, Energy and Tourism		
Outcome 1:		
Indigenous Tourism Business Ready Program	884	1,781
Indigenous Communities/ Mining Industry Working in Partnership Program	517	500
Total Resources, Energy and Tourism Portfolio	1,401	2,281
Treasury Portfolio		
Total Treasury Portfolio	<i>not specified</i>	<i>none</i>
Total Australian Government Indigenous Expenditure	3,852,155	3,856,916