

Healthcare: the sustainability of Australia's health system? (Are we spending money on the right types of health care?)

Jeffrey Braithwaite, PhD,

FIML, FCHSM, FFPHRCP, FAcSS, Hon FRACMA, FAHMS

Professor and Director

Australian Institute of Health Innovation

Director

Centre for Healthcare Resilience and
Implementation Science

Immediate Past President

International Society for Quality in Health Care
(ISQua)

**ACOLA Parliamentary Library
Seminar**

April 10th, 2024

11 am – 12 pm

20-25 Keynote with Q&A

Virtual/ Canberra, Australia

Acknowledgement of Country

THE ARTWORK CIRCLES OF THE NIGHT SKY IS CREATED BY PROFESSOR LIZ CAMERON,
DHARUG WOMAN AND MACQUARIE UNIVERSITY ALUMNUS



We acknowledge the traditional custodians of the land on which Macquarie University is situated, the Wallumattagal people of the Dharug nation, whose cultures and customs have nurtured, and continue to nurture, this land, since the Dreamtime.

We acknowledge the Traditional Custodians of the various lands on which you all join today and the Aboriginal and Torres Strait Islander people participating in this webinar.

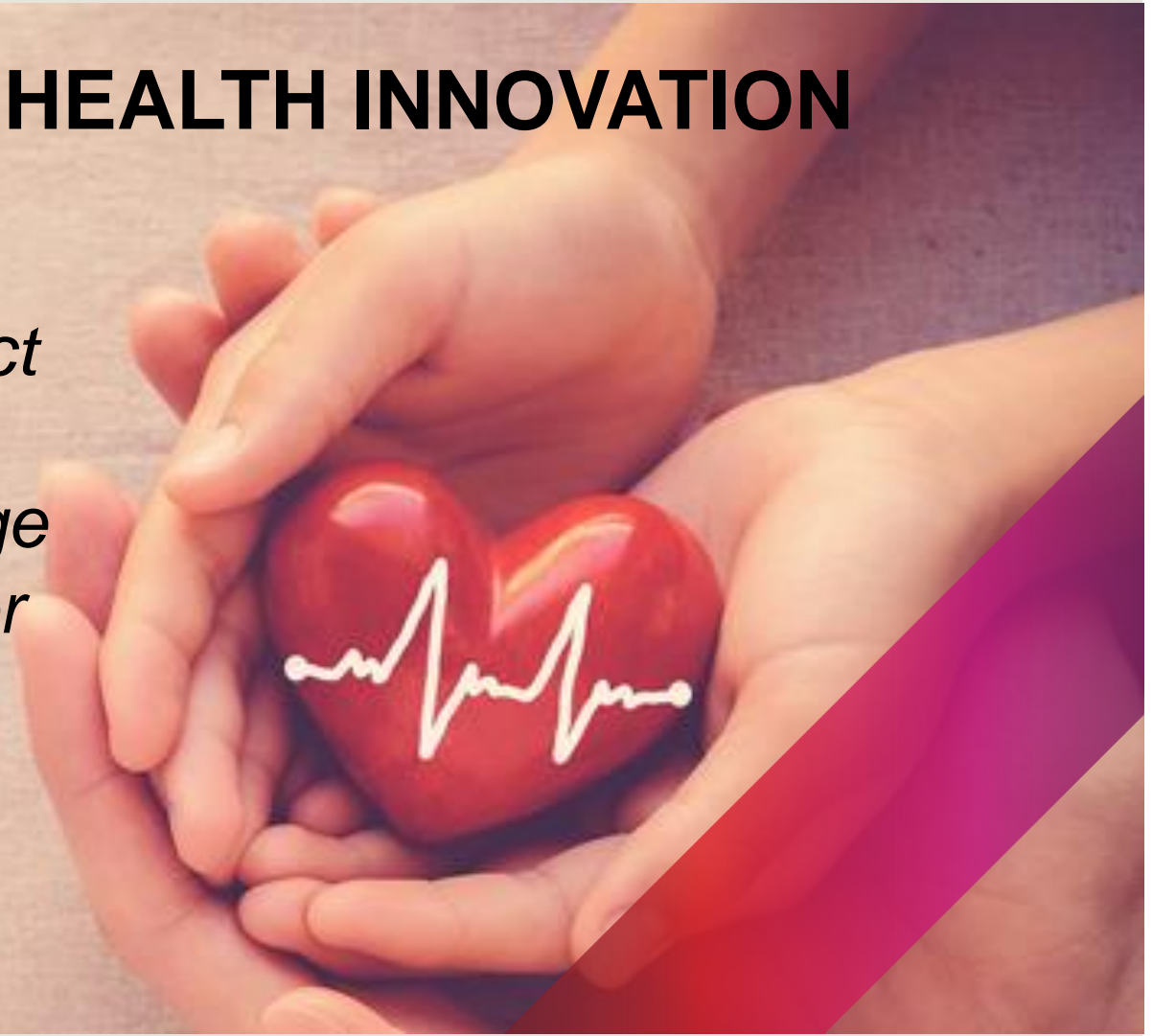
We pay our respects to Elders past, present and emerging.



AUSTRALIAN INSTITUTE OF HEALTH INNOVATION

Our goal is to co-create high-impact health services and systems research that drives positive change in policy, practice and behaviour for the benefit of all.

aihi.mq.edu.au



Australian Institute of Health Innovation



AIHI

AUSTRALIAN INSTITUTE
OF HEALTH INNOVATION



Professor
**Jeffrey
Braithwaite**

Founding Director,
AIHI

Director, Centre for
Healthcare
Resilience and
Implementation
Science



Professor
**Johanna
Westbrook**

Director, Centre for
Health Systems
and Safety
Research



Professor
**Enrico
Coiera**

Director, Centre for
Health Informatics



Professor
**Henry
Cutler**

Director, Macquarie
University Centre
for the Health
Economy

NHMRC Partnership
Centre for Health
System Sustainability

NHMRC Centre of
Research Excellence
in Implementation
Science in Oncology

NHMRC Centre of
Research Excellence
in Digital Health



Prologue:

Are we on track for 2030?



1 NO POVERTY

2 ZERO HUNGER

3 GOOD HEALTH AND WELL-BEING

4 QUALITY EDUCATION

5 GENDER EQUALITY

6 CLEAN WATER AND SANITATION

7 AFFORDABLE AND CLEAN ENERGY

8 DECENT WORK AND ECONOMIC GROWTH

9 INDUSTRY, INNOVATION AND INFRASTRUCTURE

10 REDUCED INEQUALITIES

11 SUSTAINABLE CITIES AND COMMUNITIES

12 RESPONSIBLE CONSUMPTION AND PRODUCTION

13 CLIMATE ACTION

14 LIFE BELOW WATER

15 LIFE ON LAND

16 PEACE, JUSTICE AND STRONG INSTITUTIONS

17 PARTNERSHIPS FOR THE GOALS

MOBILE PHONES

INTERNET

What does the current health system look like?



[Australian Government, Department of Health and Aged Care. (2019). Australia's health landscape infographic. <https://www.health.gov.au/resources/publications/australias-health-landscape-infographic>]



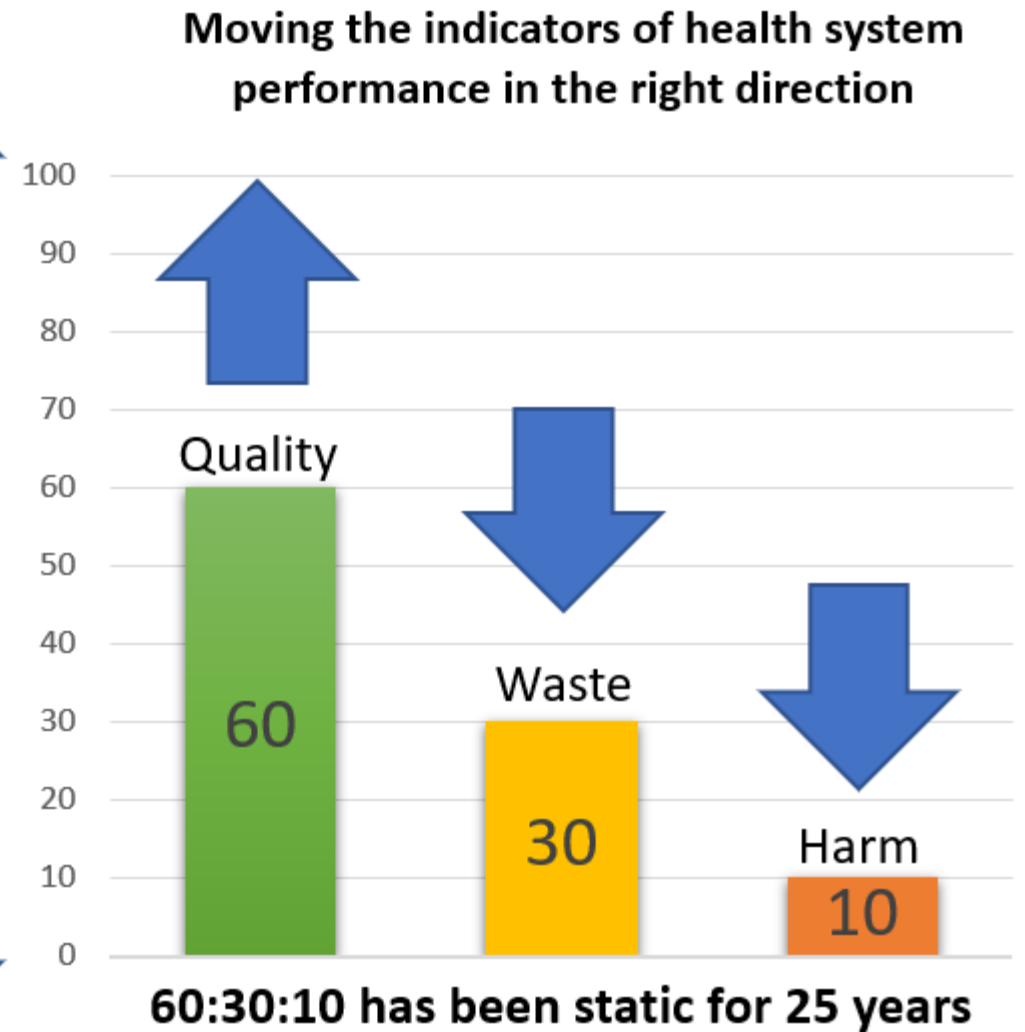
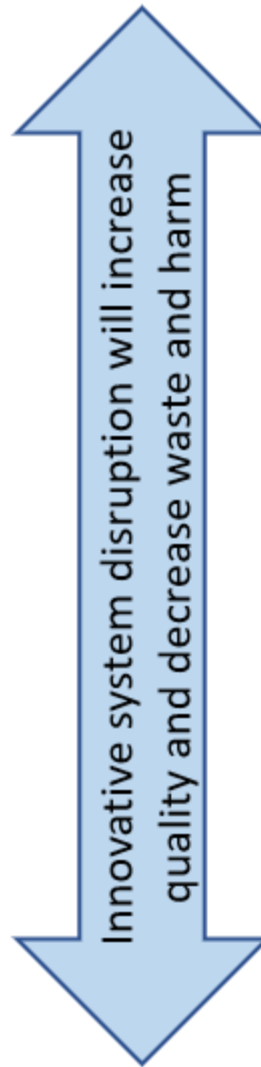
Part 1: The problem from a research perspective

Longstanding challenges

The problem

- It takes an average of 17 years for only 14% of new discoveries to enter practice
- Roughly 60% of care is in line with evidence or consensus-based guidelines
- About 30% of health care is waste of some kind
- Around 10% of patients are harmed when receiving care

Just three numbers – 60:30:10



[Braithwaite, J., Glasziou, P. & Westbrook, J. The three numbers you need to know about healthcare: the 60-30-10 Challenge. *BMC Med* 18, 102 (2020). <https://doi.org/10.1186/s12916-020-01563-4>]

In 6 out of 10 encounters, patients receive care according to best practice guidelines

In 3 out of 10 encounters, patients receive ineffective or low-value care

In 1 out of 10 encounters, patients are harmed



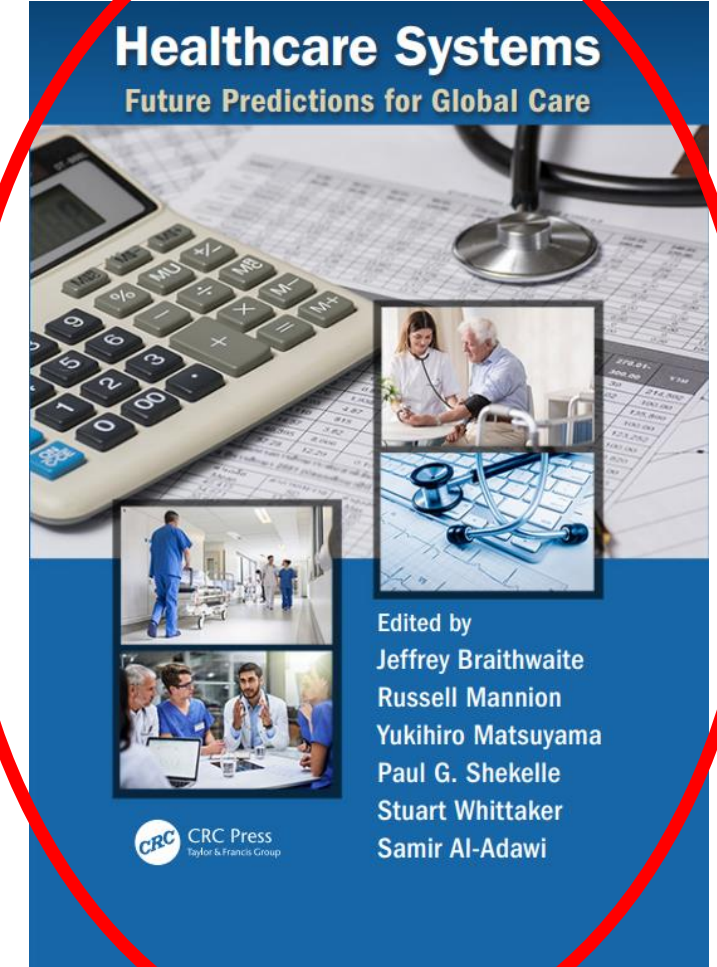
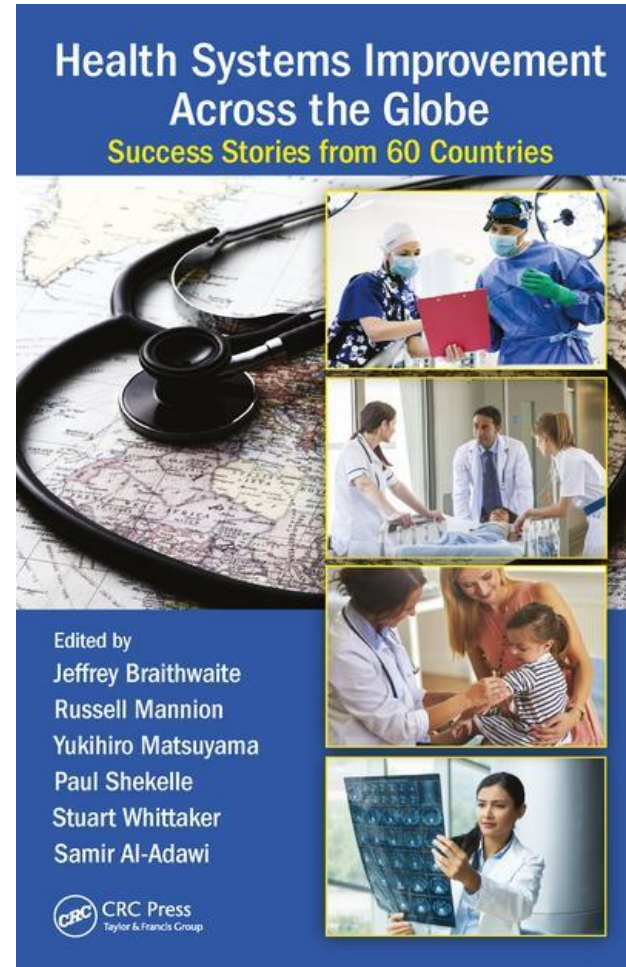
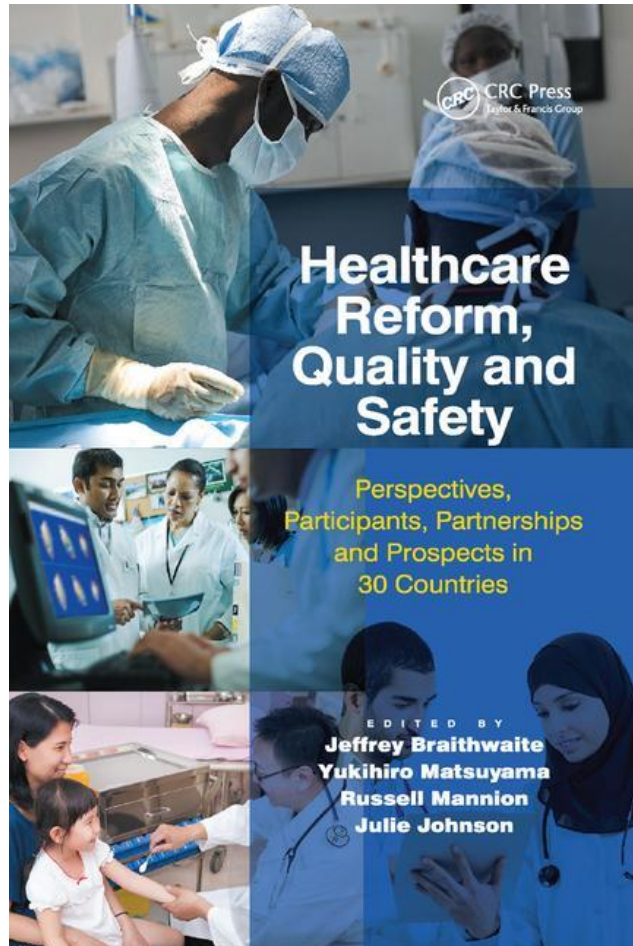
MACQUARIE
University

AUSTRALIAN INSTITUTE
OF HEALTH INNOVATION

Part 2: Navigating through to 2030

Sustainable healthcare

A series on international health reform



Healthcare Systems: Future Predictions for Global Care

Healthcare Systems Future Predictions for Global Care



**148 authors
covering 152
countries**

CRC
CRC Press
Taylor & Francis Group

Russell Mannion
Yukihiro Matsuyama
Paul G. Shekelle
Stuart Whittaker
Samir Al-Adawi



International Journal for Quality in Health Care, 2018, 30(10), 823–831

doi: 10.1093/intqhc/mzy242

Advance Access Publication Date: 20 December 2018

Perspectives on Quality

OXFORD

Perspectives on Quality

The future of health systems to 2030: a roadmap for global progress and sustainability

JEFFREY BRAITHWAITE^{1,2,3,4}, RUSSELL MANNION^{1,2},
YUKIHIRO MATSUYAMA^{1,3,5}, PAUL G. SHEKELLE⁶,
STUART WHITTAKER⁷, SAMIR AL-ADAWI^{1,8}, KRISTIANA LUDLOW¹,
WENDY JAMES¹, HSUEN P. TING¹, JESSICA HERKES¹,
ELISE MCPHERSON¹, KATE CHURRUCA¹, GINA LAMPRELL¹,
LOUISE A. ELLIS¹, CLAIRE BOYLING¹, MEAGAN WARWICK¹,
CHIARA POMARE¹, WENDY NICKLIN⁴, and CLIFFORD F. HUGHES^{1,4}

¹Centre for Healthcare Resilience and Implementation Science, Australian Institute of Health Innovation, Level 6, 75 Talavera Road, Macquarie University, Sydney, NSW 2109, Australia, ²Health Services Management Centre (HSMC), University of Birmingham Park House 40 Edgbaston Park Road, Birmingham, B15 2RT UK, ³The Canon Institute for Global Studies, 11th Floor, ShinMarunouchi Building 5-1 Marunouchi 1-chome, Chiyoda-ku, Tokyo 100-6511, Japan, ⁴International Society for Quality in Health Care (ISQua), 4th Floor, Huguenot House 35-38 St Stephens Green Dublin 2, Ireland, D02 NY63, ⁵Chiba University of Commerce, 1-3-1 Konodai, Ichikawa-shi, Chiba 272-8512, Japan, ⁶VA Greater Los Angeles Healthcare System, 1301 Wilshire Blvd, Los Angeles, CA 90073, USA, ⁷School of Public Health and Family Medicine, Faculty of Health Sciences, University of Cape Town Observatory Rondebosch, Cape Town, 7700, South Africa, and ⁸College of Medicine and Health Sciences, Sultan Qaboos University, PO Box 35, Alkoudh.123 Sultanate of Oman Seeb, Muscat, Oman

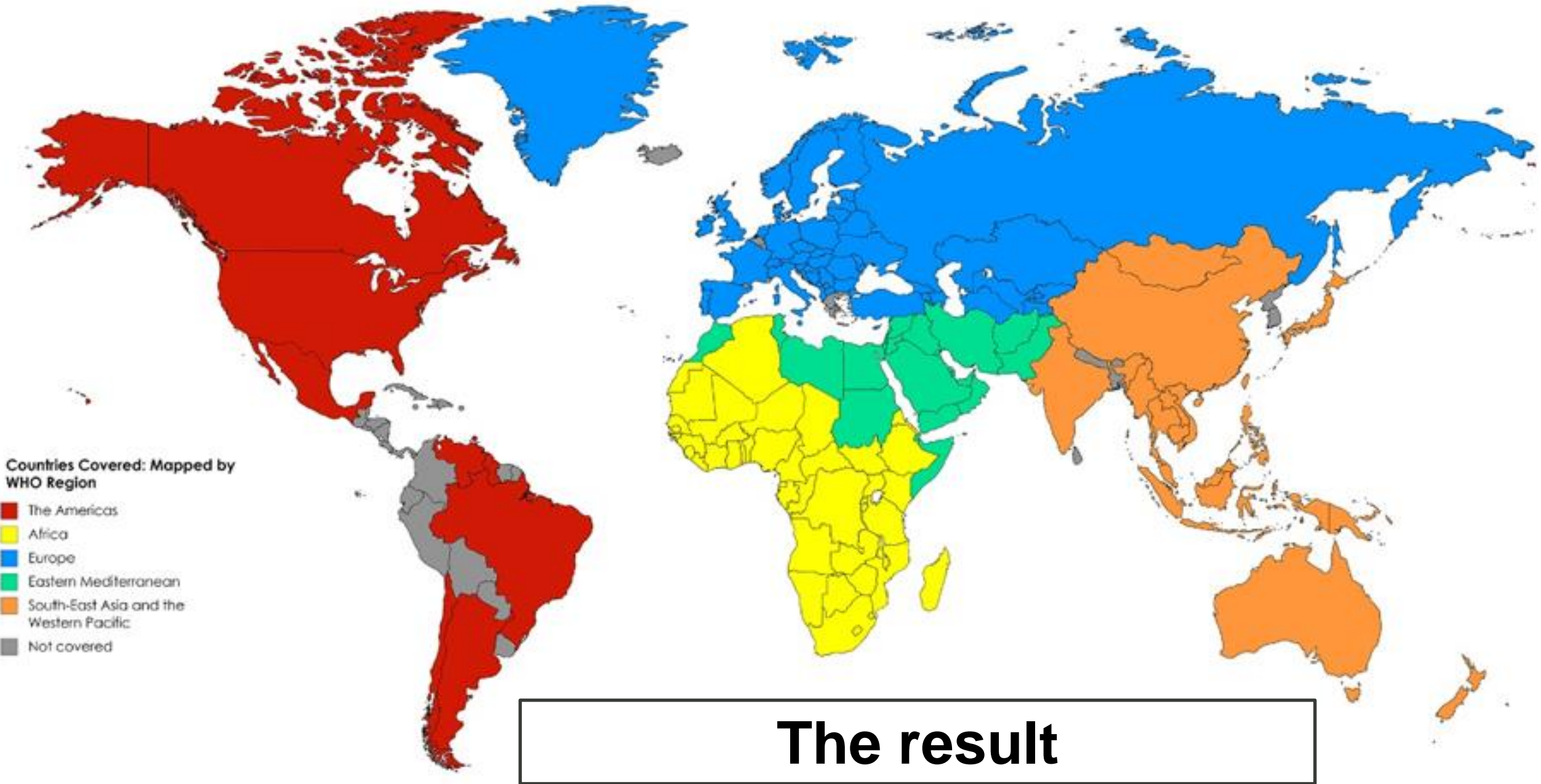
Address reprint requests to: Jessica Herkes, Centre for Healthcare Resilience and Implementation Science, Australian Institute of Health Innovation, Level 6, 75 Talavera Road, Macquarie University, Sydney, NSW 2109, Australia.

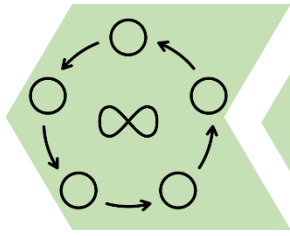
Tel: +61 2 9850 2401; Fax: +61-298-502-499; E-mail: jeffrey.braithwaite@mq.edu.au

Editorial Decision 16 October 2018; Accepted 6 December 2018

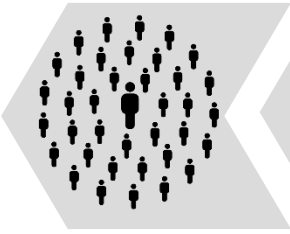
Abstract

Most research on health systems examines contemporary problems within one, or at most a few, countries. Breaking with this tradition, we present a series of case studies in a book written by key policy-

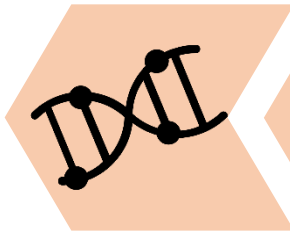




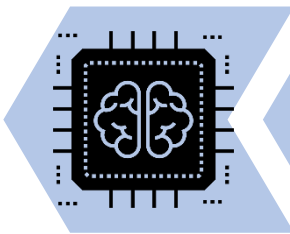
SUSTAINABILITY



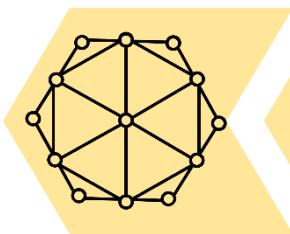
DEMOGRAPHICS



GENOMICS



**ARTIFICIAL
INTELLIGENCE**



MODELS OF CARE



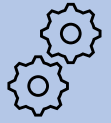
**MACQUARIE
University**

**AUSTRALIAN INSTITUTE
OF HEALTH INNOVATION**

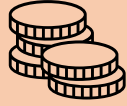
2030 Trends

2030

Initiatives



INTEGRATED CARE



VALUE-FOR-MONEY SERVICES



PATIENT-BASED CARE



UNIVERSAL COVERAGE



INFORMATION TECHNOLOGY



HEALTHY, HEALTH-LITERATE POPULATIONS



PREVENTATIVE CARE



HIGH QUALITY, SAFE, STANDARD-BASED CARE



WORKFORCE DEVELOPMENT

The system as we know it

THE ROAD TO 2030

The ideal healthcare system of the future

Fragmented and siloed

1 INTEGRATED CARE

Cohesive, joined up

Volume-based care

2 VALUE-FOR-MONEY SERVICES

Value-based care

Provider-oriented

3 PATIENT-BASED CARE

Person-centred

Barriers to access and affordability

4 UNIVERSAL COVERAGE

Wide access without financial hardship

Static, legacy-based systems; not data driven

5 INFORMATION TECHNOLOGY

Machine learning and AI enabled: Data-driven clinical decision making

Unhealthiness amongst the population: Poor health literacy

6 HEALTHY, HEALTH-LITERATE POPULATIONS

Well-being, healthy ageing and health aware

Focus on acute care

7 PREVENTATIVE CARE

Shift to primary-orientated, health promoting, preventative care

Entrenched levels of poor quality, unsafe care

8 HIGH-QUALITY, SAFE, STANDARD-BASED CARE

Less harmful, more effective services

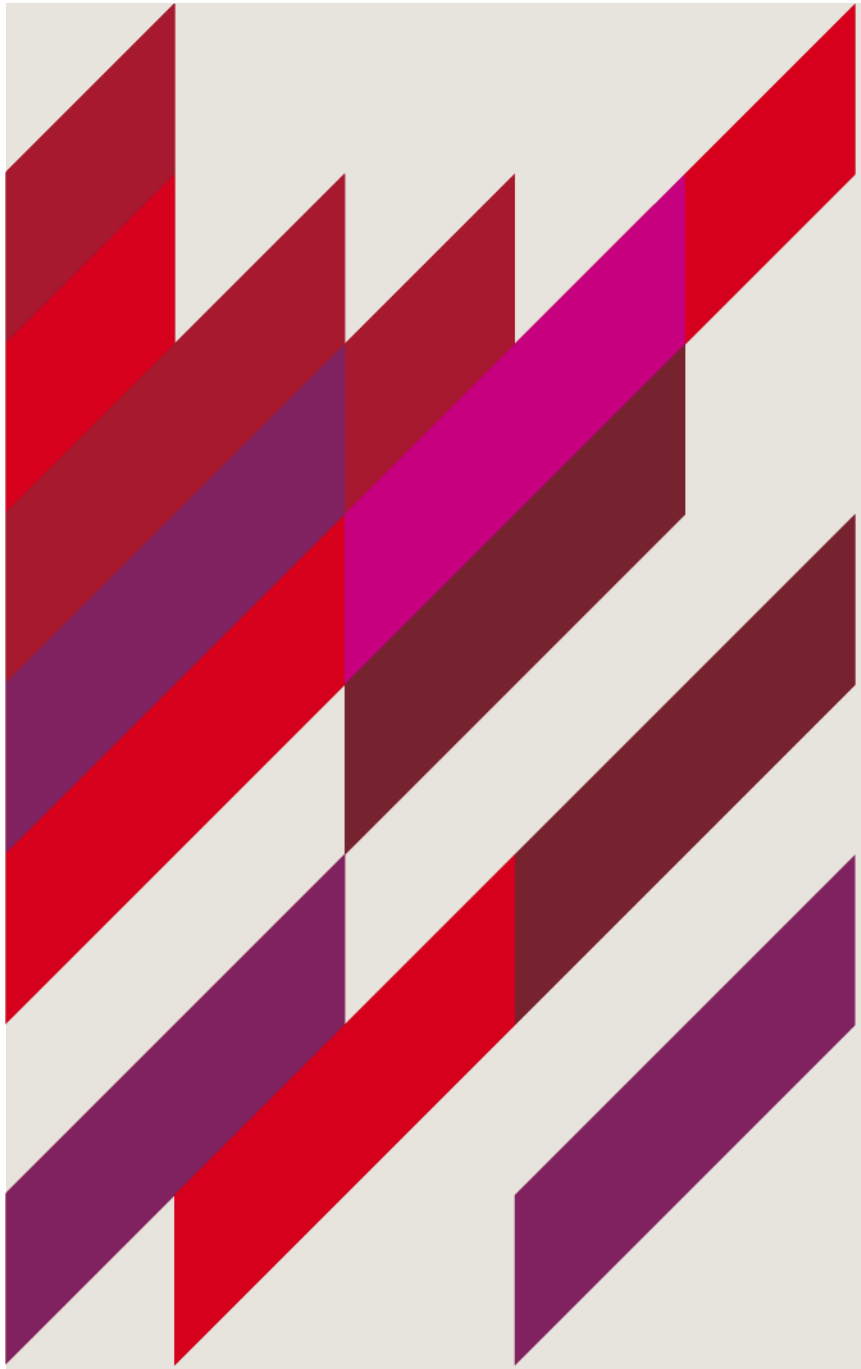
Uneven workforce, training, knowledge and development

9 WORKFORCE DEVELOPMENT

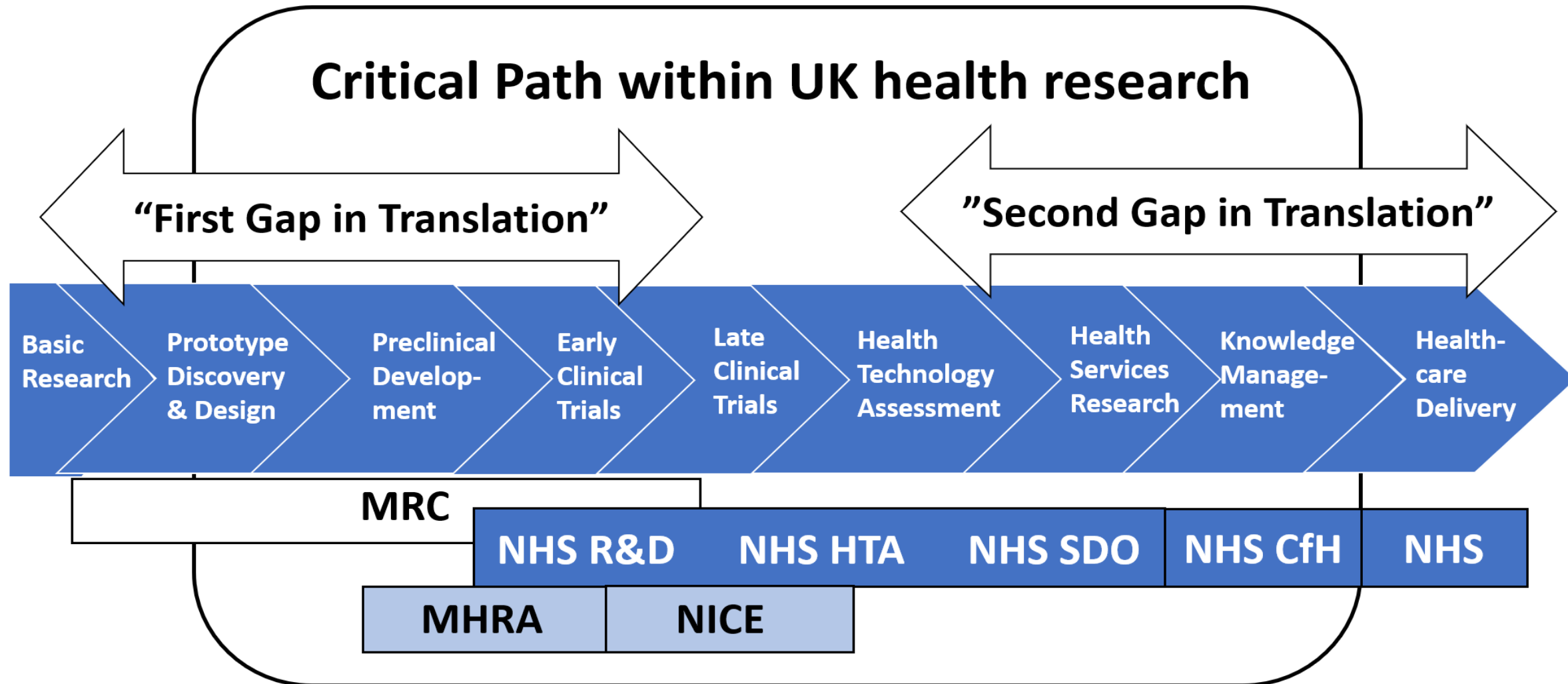
A fit-for-purpose, highly trained and sustainable workforce



Part 4: Complexities of the issues

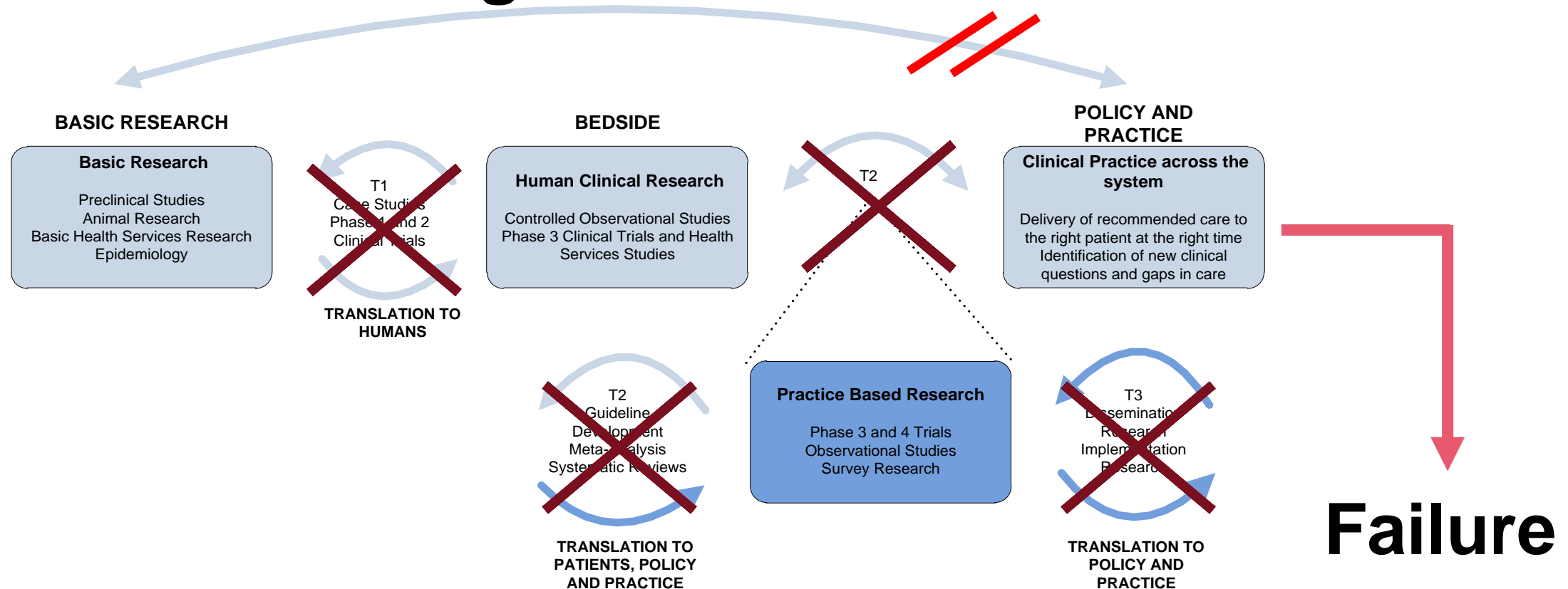


A “solution”: The knowledge pipeline



But the pipeline is an idealisation

Blockages and fractures



**The pipeline model
suggests solutions
are linear**

**But the health
system is complex
– incredibly
complex**

Complex systems are everywhere



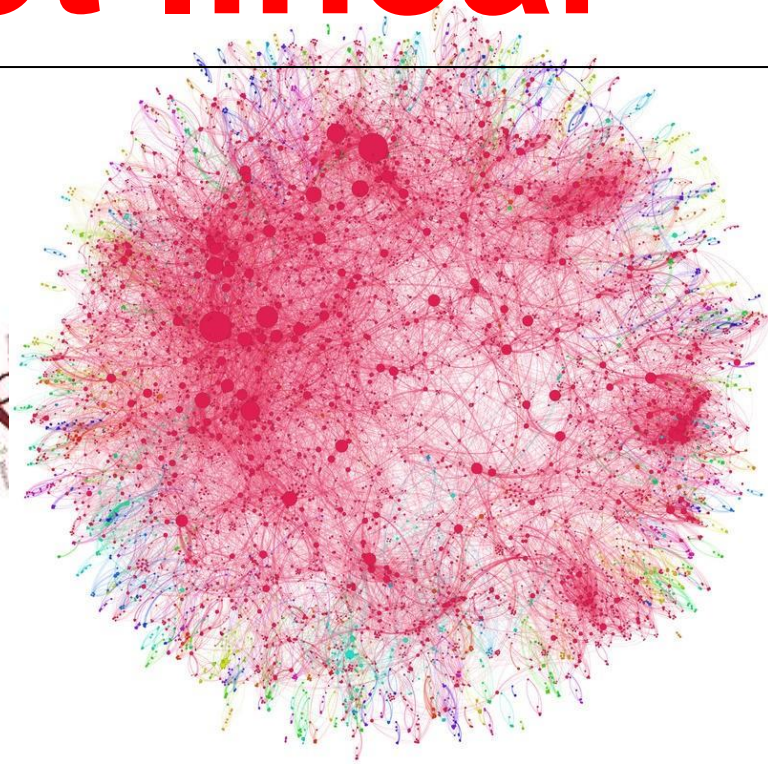
It's rarely simple to solve any health system problem, not just a pandemic



MACQUARIE
University

AUSTRALIAN INSTITUTE
OF HEALTH INNOVATION

Health systems problems are typically complex, not linear



Complexity Science in Health Care: *A WHITE PAPER*



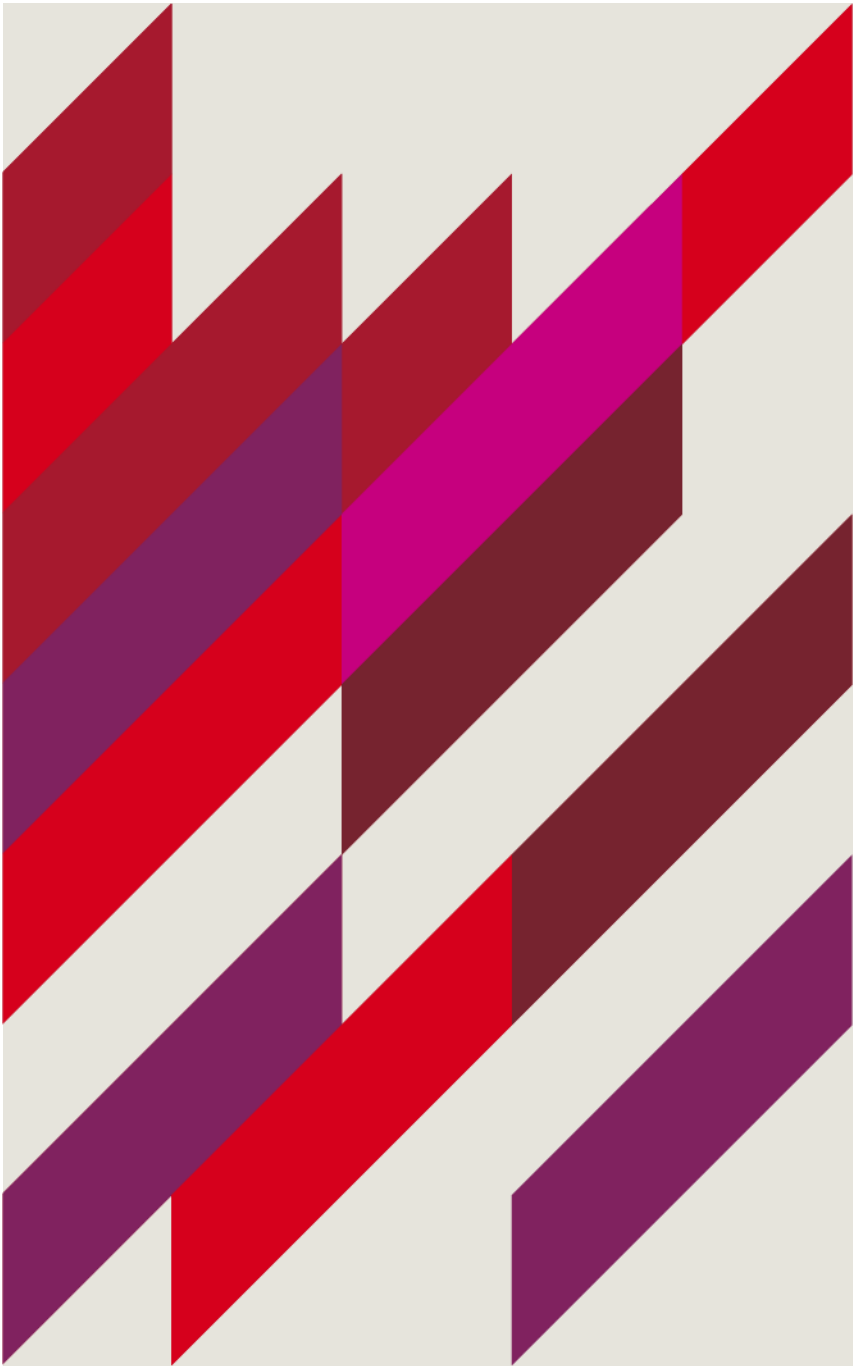
MACQUARIE
University

AUSTRALIAN INSTITUTE
OF HEALTH INNOVATION





Part 5: Trade-offs to move things forward



[Placeholder]

- [Placeholder]

Misinformation spread through the masses

- False cures and quick fix/ miracle treatments that is discourage seeking real medical advice
- Vaccines are considered as harmful
- Misinformed about food and diet – what is “healthy” and what is not, leading to improper nutrition
- Misleading information about the nature and transmission of diseases



Discussion: comments, questions, observations?

Acknowledgements

Complexity Science/ Genomics/ LHS

Dr Kate Churruca
Dr Louise Ellis
Dr Janet Long
Dr Mitchell Sarkies
Dr Georgia Fisher
Dr Samantha Spanos
Dr Lisa Pagano
Maree Saba

Current Research Candidates

Sheila Pham
Faran Naru
Sagda Osman
Dr Darran Foo

Professional and Project Support

Caroline Proctor
Laura Joynson
Dr Kirk Olsen

Partnership Centre for Health System Sustainability

Prof Yvonne Zurynski
Dr Trent Yeend
Dr K-lynn Smith
Isabelle Meulenbroeks
Genevieve Dammery
Dr Karen Hutchinson
Nehal Singh
Shalini Wijekulasuriya

Human Factors and Resilience

Prof Robyn Clay-Williams
Dr Elizabeth Austin
Dr Collen Cheek
Dr Luke Testa
Dr Emilie Francis-Auton
Dr Nema Heyba
Lieke Richardson
Dr Jen Evans

CareTrack Aged/ Patient Safety

Hon. Prof Peter Hibbert
Dr Louise Wiles
Dr Gaston Arnolda
Dr Rebecca Bilton
Ms Charlie Molloy
Dr Louise Raggett

MRFF Genomics

Dr Janet Long
Dr Klay Lamprell
Dr Samantha Spanos
Dr Maryam Vizheh
Dr Samran Sheriff
Romika Patel

Professional Research Administration

Elle Leask
Chrissy Clay
Romika Patel

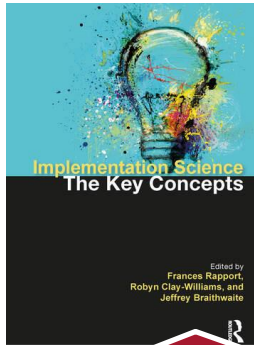
Health Outcomes

Prof Rebecca Mitchell
Dr Reidar Lystad
Dr Tolesa Okuba
Dr Seigo Mitsutake
Sandy Sa
Shalini Wijekulasuriya
Nicole Halim

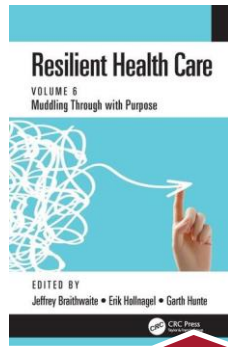
NHMRC CRE Implementation Science in Oncology

Dr Gaston Arnolda
Dr Bróna Nic Giolla Easpaig
Dr Klay Lamprell
Romika Patel
Dr Mia Bierbaum
Dr Samantha Spanos

Recently published books



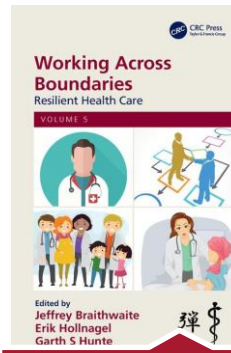
2022 – Transforming Healthcare with Qualitative Research



2021 – Muddling Through With Purpose



2020 – Transforming Healthcare with Qualitative Research



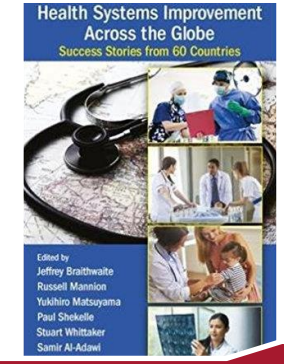
2019 – Working Across Boundaries



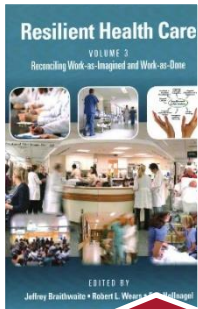
2018 – Delivering Resilient Health Care



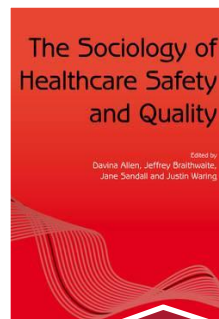
2018 – Healthcare Systems: Future Predictions for Global Care



2017 – Health Systems Improvement Across the Globe: Success Stories from 60 Countries



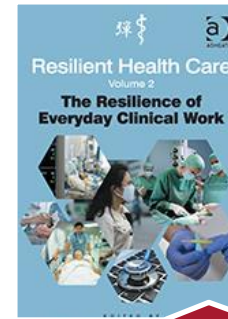
2017 – Reconciling Work-as-imagined and Work-as-done



2016 – The Sociology of Healthcare Safety and Quality



2015 – Healthcare Reform, Quality and Safety: Perspectives, Participants, Partnerships and Prospects in 30 Countries



2015 – The Resilience of Everyday Clinical Work



2013 – Resilient Health Care



2010 – Culture and Climate in Health Care Organizations

Forthcoming books



Gaps: the Surprising Truth
Hiding in the In-between



Surviving the Anthropocene



Counterintuitivity: How your
brain defies logic



Handbook on Climate Change
and Health System Sustainability

Jeffrey Braithwaite PhD

FIML, FCHSM, FFPHRCP, FAcSS, Hon FRACMA, FAHMS



AUSTRALIAN INSTITUTE
OF HEALTH INNOVATION

Founding Director

Australian Institute of Health Innovation

Director

Centre for Healthcare Resilience and Implementation Science





Professor

Faculty of Medicine, Health and Human Sciences, Macquarie University
Sydney, Australia

Immediate Past President

International Society for Quality in Health Care (ISQua)



	Email:	jeffrey.braithwaite@mq.edu.au
	AIHI website:	http://aihi.mq.edu.au
	Twitter:	@JBraithwaite1
	Wikipedia:	http://en.wikipedia.org/wiki/Jeffrey_Braithwaite