

# GENERAL PLAN

of country surrounding suggested Federal Capital Site

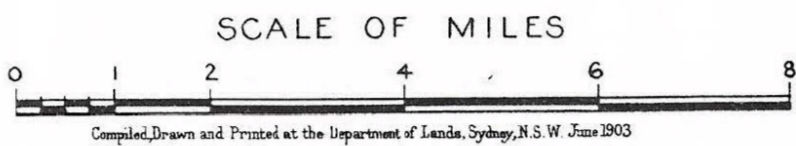
in the locality of

# ORANGE

N.S.W.

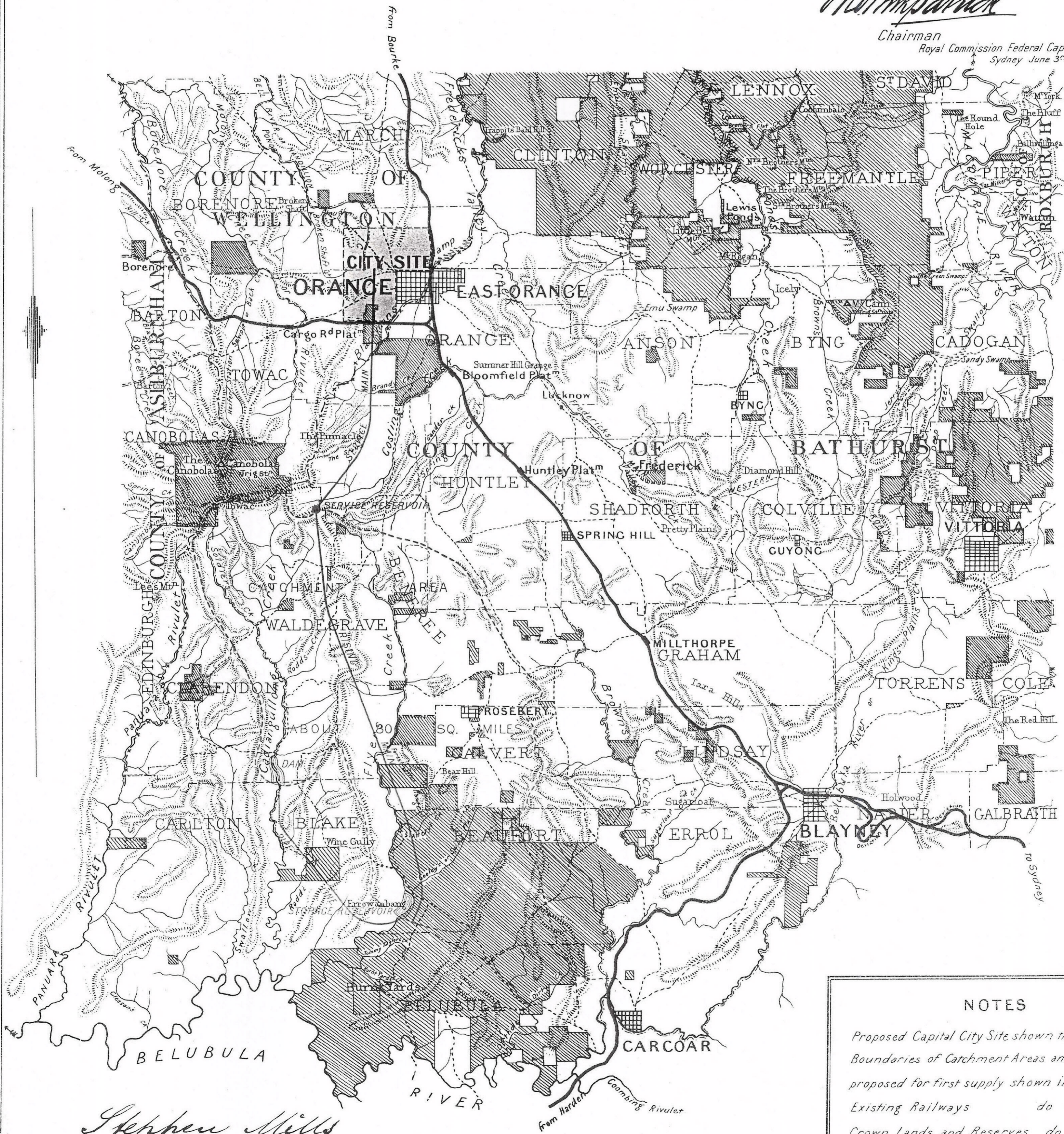
showing approximately City Site, Proposed Water Supply, Railways &c.

# Nº 13



*St. Patrick*

Chairman  
Royal Commission Federal Capital Sites  
Sydney June 3<sup>rd</sup> 1903.



*Stephen Mills*  
Secretary

**NOTES**

Proposed Capital City Site shown thus CITY SITE

Boundaries of Catchment Areas and Waterworks proposed for first supply shown in red

Existing Railways do —————

Crown Lands and Reserves do [hatched box]