

COMMONWEALTH CELEBRATIONS.

Sydney

Descriptive & Illustrative



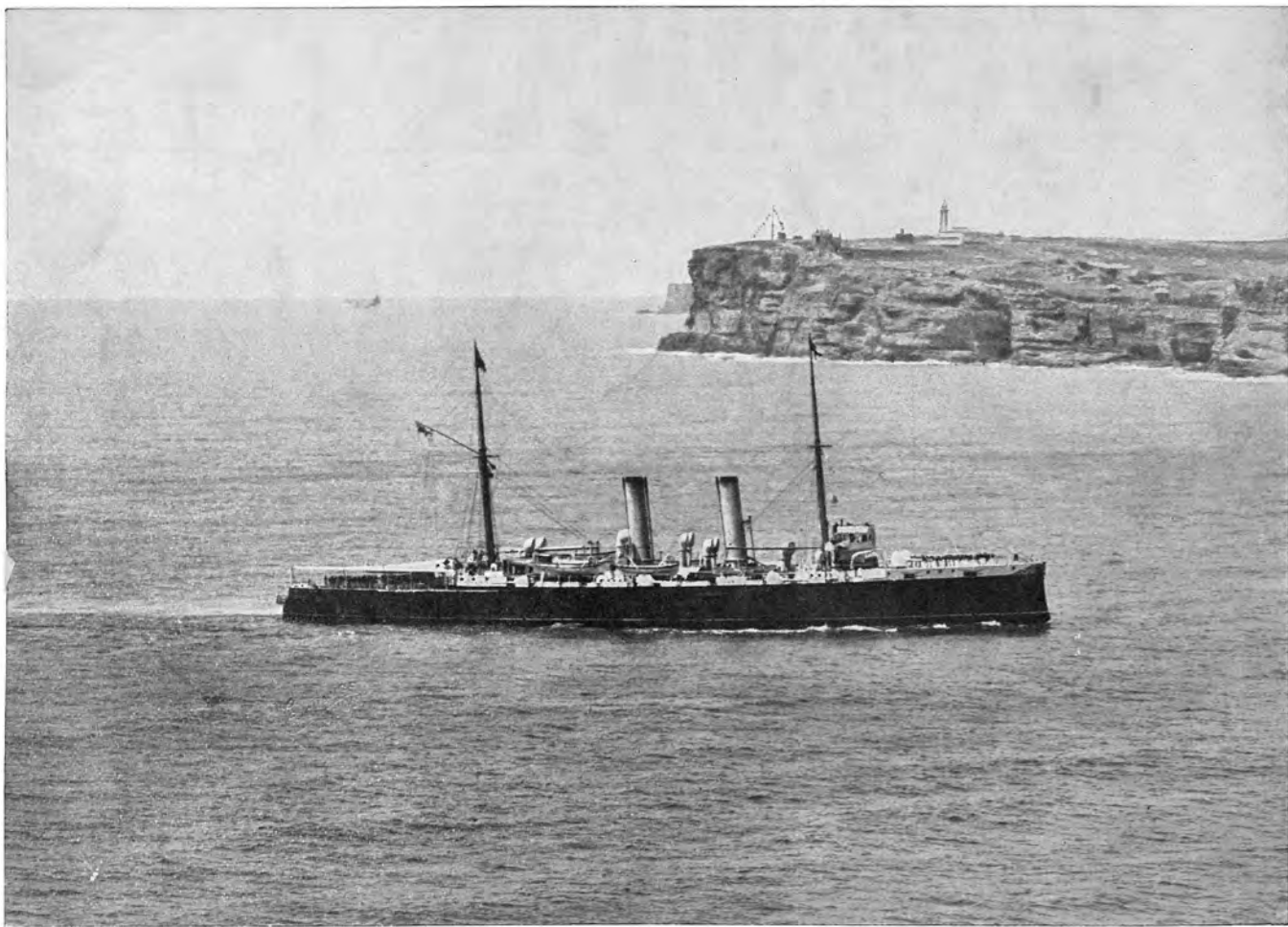
H.M.S. ROYAL ARTHUR,
WHICH CONVEYED LORD HOPESTOUN TO SYDNEY.



with PANORAMA.

3rd Edition.

Copyright, P. H. FERROUSON & CO., Sydney and London.



[From Photo. by Exchange Studios.]

Entrance to Sydney Harbour, showing South Head and Flagship "H.M.S. Royal Arthur" entering with Governor-General on board.



Circular Quay (from North). Showing Principal Wool Stores and Customs House. The magnificent Mail Steamers of the P. & O., Orient, and other liners berth here.



Photo. by G. A. Hills, Sydney.]

The Landing of the Governor-General, Lord Hopetoun, at Farm Cove, Sydney.

[Copyright,



Photo. by H. King, Sydney.]

Landing of the Governor-General. Procession passing down King Street, Sydney.

SOLDIERS OF THE QUEEN.



Imperial.



Indian.



Australian Commonwealth.



Photo, by H. King Sydney.]

N.S.W. Lancers passing through the Wool Arch



Photo, by Exchange Studios.]

The Procession in Bridge Street, passing through the Wheat Arch.

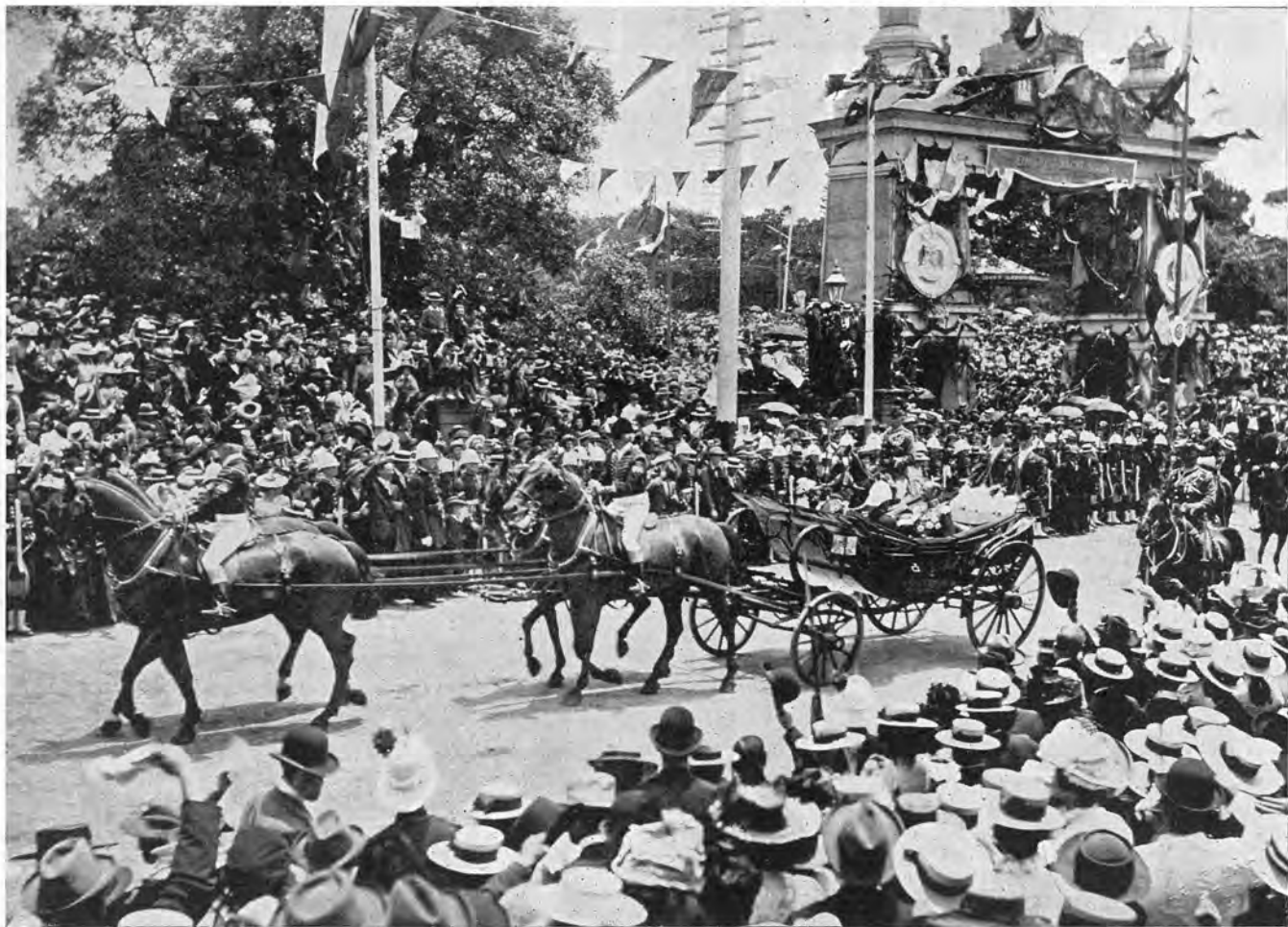
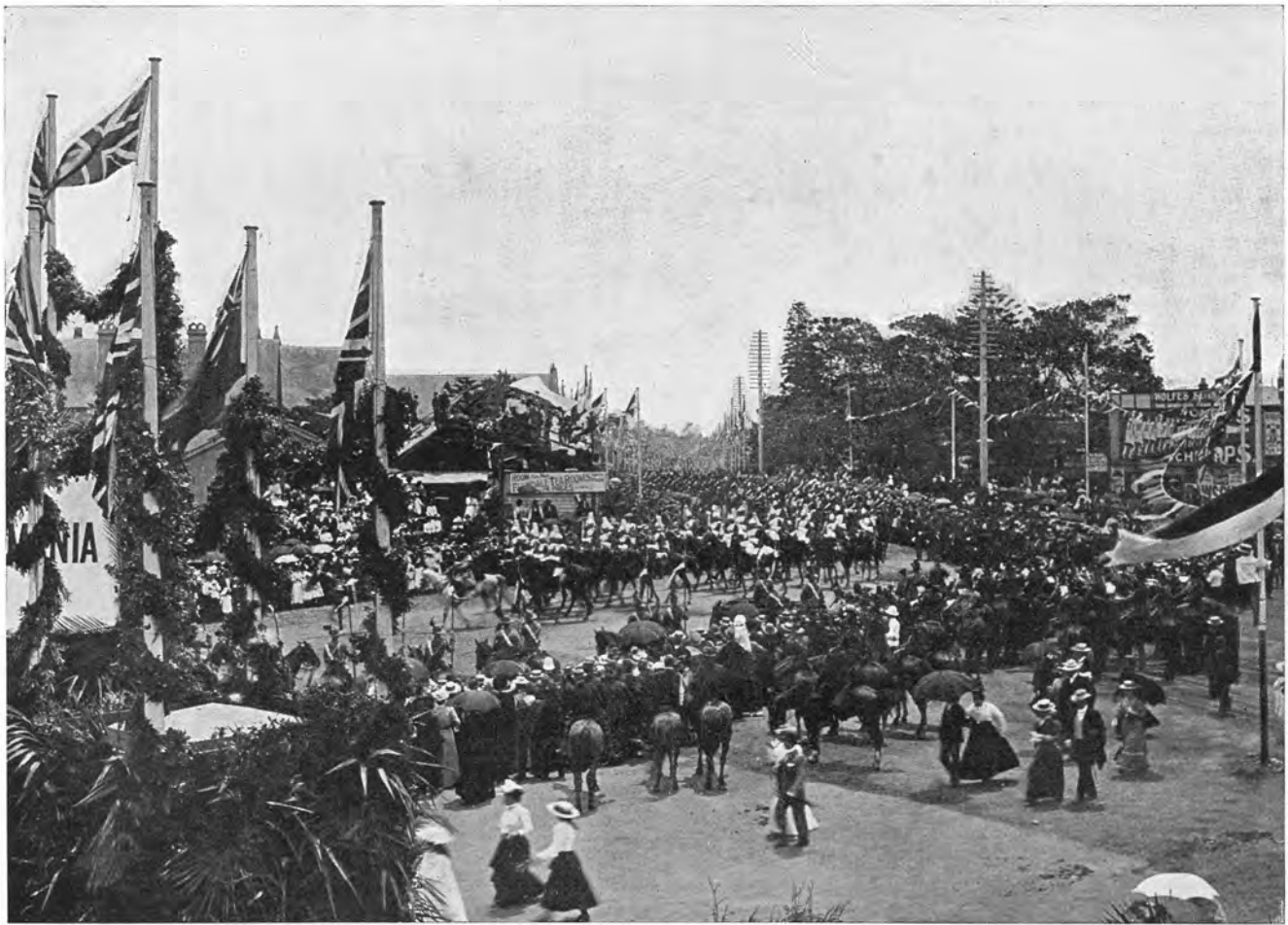


Photo. by H. King, Sydney.]

Governor-General after passing the German Arch.



The Procession entering Centennial Park. Life Guards in the foreground.



The Swearing-in Ceremony, Centennial Park. The Primate reading the prayer for the Commonwealth of Australia (composed by Lord Tennyson, Governor of South Australia).



Citizen's Commonwealth Arch.



Military Colonnade.



Wheat Arch,



Coal Arch,



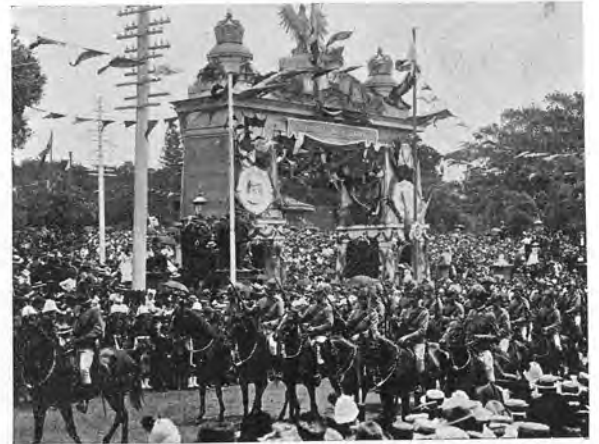
American Arch.



French Arch.



Melbourne Arch,



German Arch,

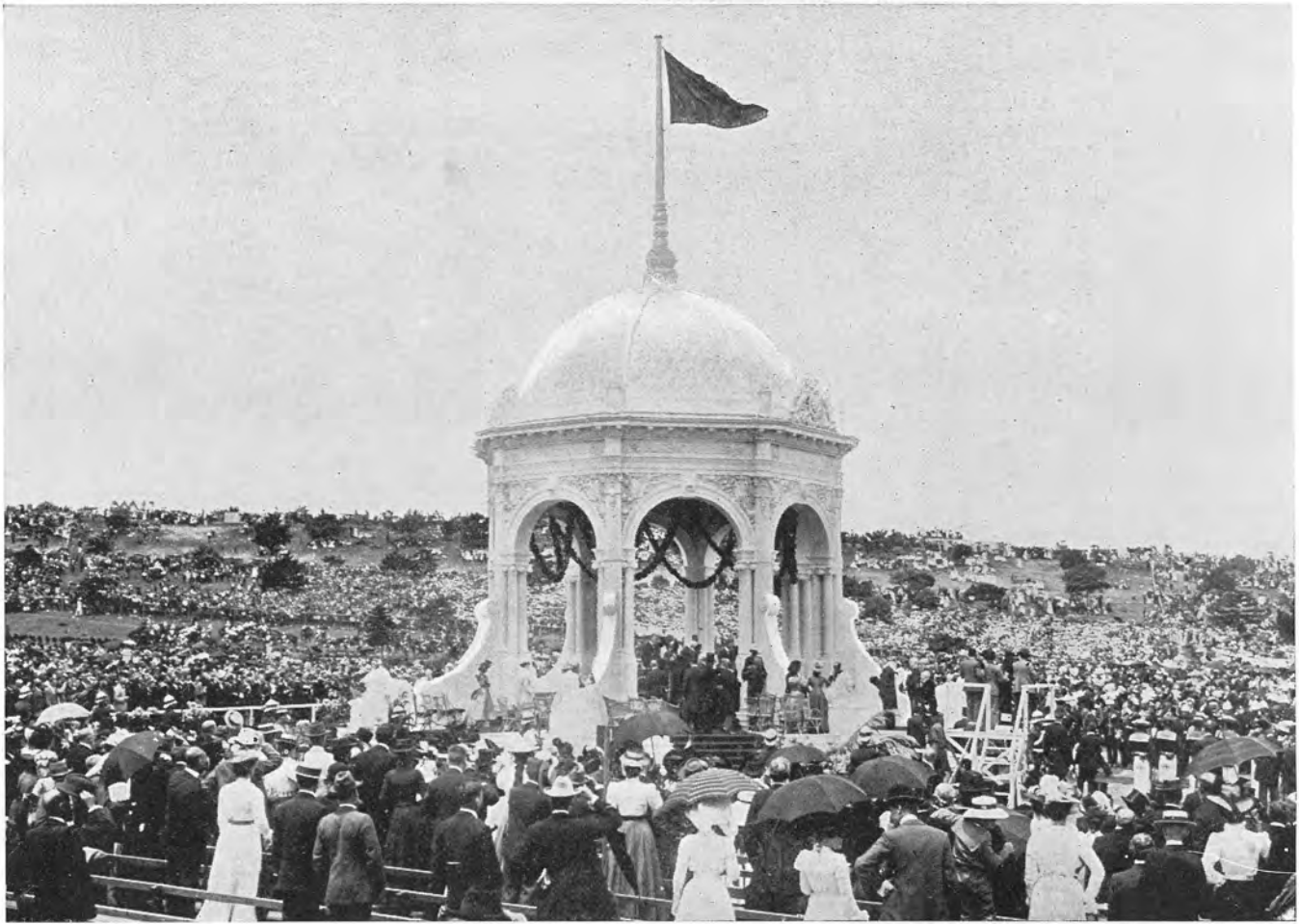


Photo. by G. A. Hills, Sydney.]

Swearing-in Ceremony, Centennial Park Pavilion, Governor-General taking the Oath of Allegiance,



Admiral Right Hon. Lord Sir Fredk Darley,
Pearson. E. Barton, P.C. Hopetoun. Lieut.-Governor of N.S.W.

Leaving the Swearing-in Pavilion after the Ceremony.



Indian Contingent passing the Colonial Secretary's Department.



Queen Victoria Markets. This gigantic modern structure is the finest of its kind in the Southern Hemisphere. Cost about three-quarters of a million.



Circular Quay. The main thoroughfare in connection with the principal harbour ferries and terminus of the Electric Tramway, Road leads to Botanical Gardens and Domain.



Town Hall, George Street. The finest in the Southern Hemisphere. Cost about £750,000. The Concert Hall contains a magnificent Organ, the largest in the world. Recitals twice a week. Admission (Wednesday Recitals) to body of Hall, free.



Railway Station. Old Exhibition Building and Prince Alfred Park in the background. A splendid service of Electric Trams connects with Circular Quay.



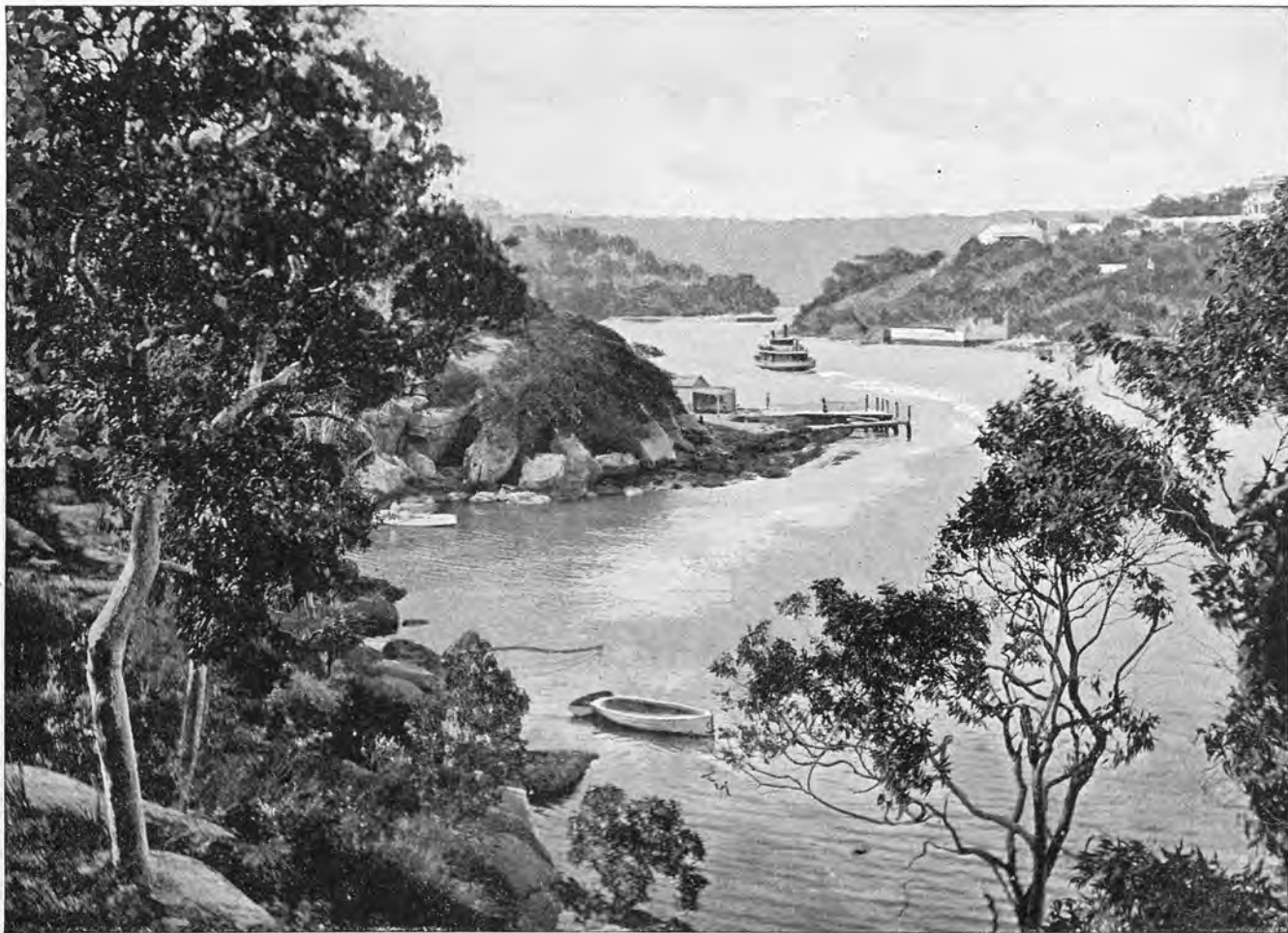
Sydney Hospital, Macquarie Street. Centrally situated, overlooking Hyde Park, Botanical Gardens, Domain, and Harbour,



Martin Place and General Post Office. Visitors are admitted to the Tower free (11 a.m. to 1 p.m., and 2 to 3 p.m.), from which magnificent views of Sydney and district are obtained,



Botanical Gardens. Overlooking Sydney Harbour and Fort Denison. Statue of Captain Arthur Phillip, R.N., First Governor of N.S.W., in the centre.



Mosman's Bay. A charming residential suburb of Sydney. Ferry from Circular Quay connected by Electric Tram with North Sydney, and Spit; Middle Harbour,



The Observatory. On Flagstaff Hill, the highest point in Sydney, commanding a fine view of the City and Harbour. 10 minutes' walk from G.P.O.

Panoramic View of Sydney Harbour from North Shore.

Rose Bay. Woolloomooloo Bay. Farm Cove. Circular Quay. City of Sydney. Darling Harbour and Miller's Point. Balmain. Long Cove and Parramatta River.



Neutral Bay. Kirabilli Point. Milson's Point and Lavender Bay. McMahon's Point. Blue's Point. Ball's Head and Berry's Bay.

