

NEW SOUTH WALES.



VICTORIA.



SOUTH AUSTRALIA.



QUEENSLAND



WEST AUSTRALIA.



TASMANIA.



# SOUVENIR OF THE FEDERATION



# OF AUSTRALIA

1<sup>ST</sup> JANUARY,  
1901.



ONE QUEEN

ONE COUNTRY

ONE PEOPLE

ONE DESTINY

# Australasian Federation.

---

Australasian Federation will now become an accomplished fact on the 1st day of January, 1901. In February, 1899, the questions in dispute were brought to a satisfactory settlement by the premiers of six Australian colonies. It was agreed that the Federal Capital should be within the borders of New South Wales, but at least 100 miles from Sydney, and that all differences between the two branches of the Legislature shall be decided by an absolute majority of both Houses of the Federal Parliament.

The referendum on the Federation question was carried in New South Wales on June 20 by 101,200 to 70,654 votes; at the same time the Federal Enabling Bill passed through all its stages in the Queensland Parliament. The Commonwealth of Australia is to be united under a single Governor-General appointed by the Crown, with one Parliament for the whole Commonwealth.

Each of the separate colonies, to be known as States, will have its own Legislature, but there will be a Parliament for the whole Commonwealth, consisting of the orthodox two Houses, a House of Representatives and a Senate, members of both being chosen by direct election of the people.

The powers of the Senate are not to be co-ordinate with those of the House of Representatives on money bills or taxation; such bills can only be affirmed, rejected, or have suggestions made thereon, but not amended by it. Members of both Houses are to receive a salary of £200 a year.

---

The Table and Inkstand are from Photos. kindly lent by the Proprietors of "The Argus" and "The Australasian."



**THE FEDERATED STATES  
OF  
AUSTRALIA.**

ENGLISH MILES.  
0 100 200 300 400



THEIR  
ROYAL HIGHNESSES  
**THE DUKE & DUCHESS OF YORK**  
COMMISSIONED BY  
**HER MAJESTY THE QUEEN**  
TO OPEN  
**THE FIRST FEDERAL PARLIAMENT.**



LORD HOPETOUN.

GOVERNOR - GENERAL.

LADY HOPETOUN.



COL. SIR GERARD SMITH, K.C.M.G., W.A.S.



EARL BEAUCHAMP, K.C.M.G., N.S.W.



LORD LAMINGTON, K.C.M.G., Q.L.A.N.D.

**STATE GOVERNORS.**

JULY

1906



LORD TENNYSON, K.C.M.G., S.A.U.S.



HON. SIR JOHN MADDEN, K.B., V.I.C.



VISCOUNT GORMANSTON, G.C.M.G., T.A.S.

HON. ALFRED DEAKIN, VIC.



HON. E. BARTON, L.D., N.S.W.

HON. C.C. KINGSTON, SOUTH AUS.



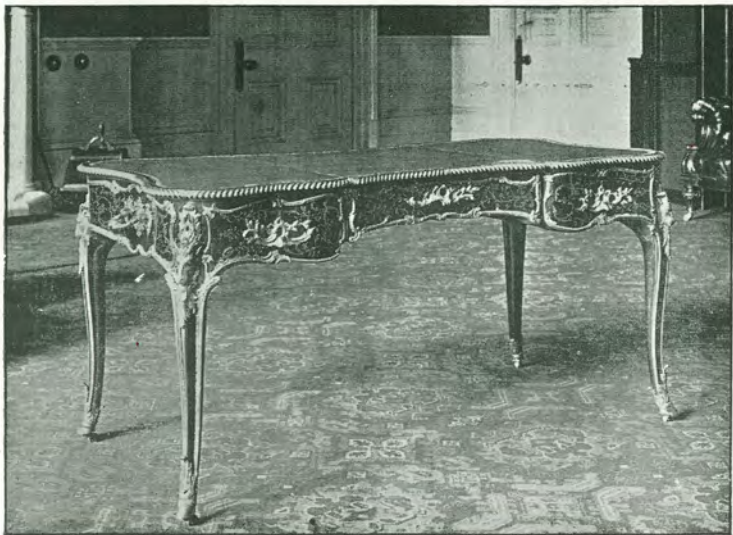
**COLONIAL DELEGATES  
TO THE  
IMPERIAL GOVERNMENT.**



HON. SIR P.O. FYSH, TAS.

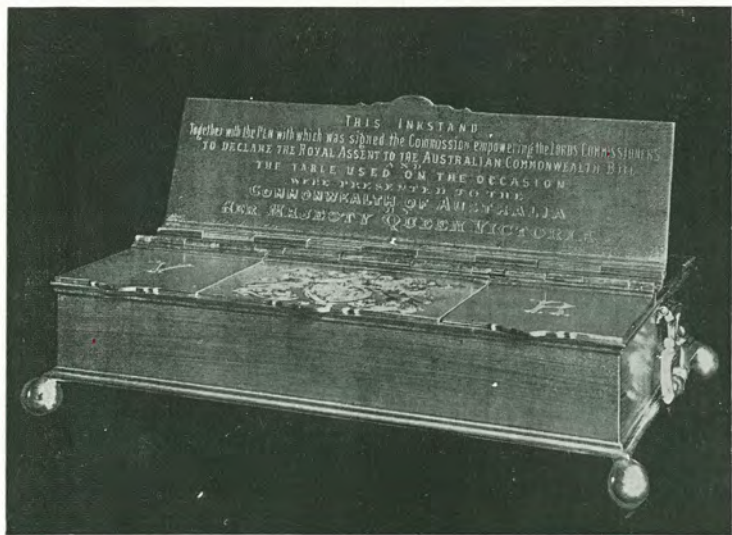


HON. J.R. DICKSON, Q'LAND.



**TABLE ON WHICH QUEEN VICTORIA SIGNED THE COMMONWEALTH BILL,  
JULY 9TH, 1900.**

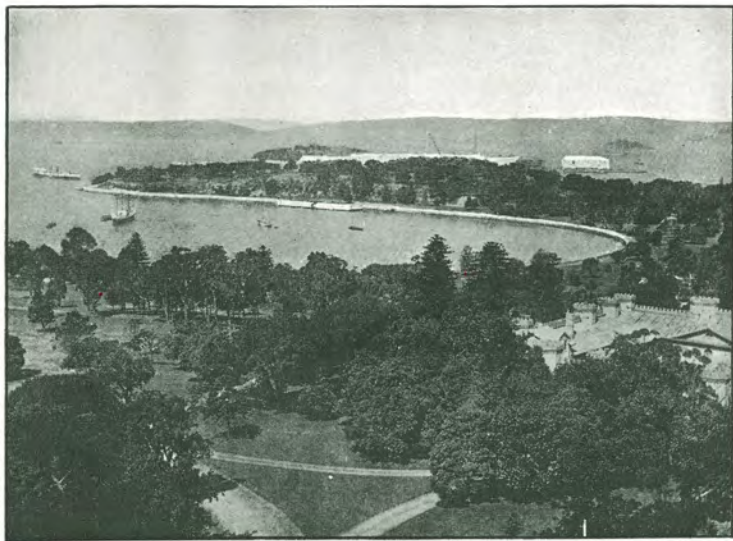




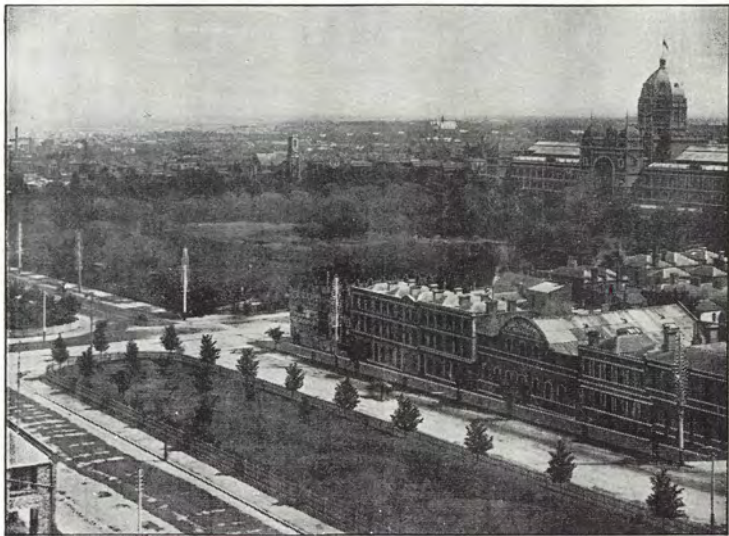
**INKSTAND USED ON THE OCCASION—TABLE AND INKSTAND HAVE BEEN PRESENTED TO THE COMMONWEALTH OF AUSTRALIA BY HER MAJESTY.**



*V*IEW OF SYDNEY, NEW SOUTH WALES.



*SYDNEY HARBOUR, NEW SOUTH WALES*



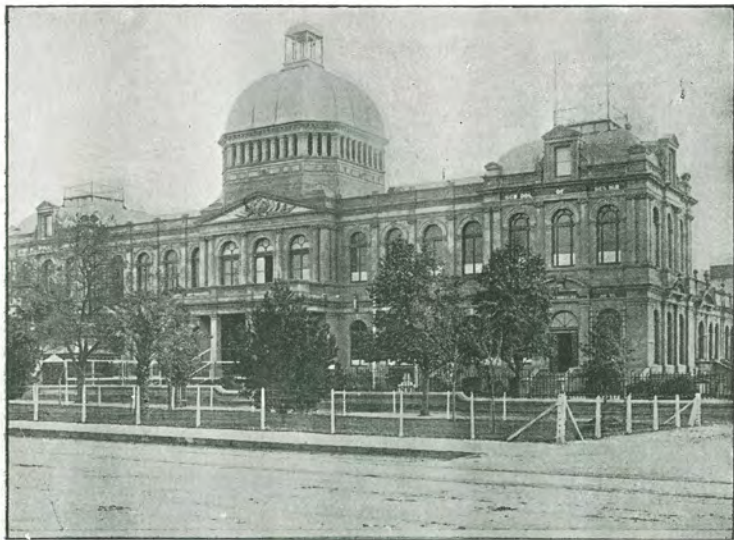
*VIEW OF MELBOURNE, VICTORIA.*



**VIEW OF MELBOURNE, VICTORIA.**



**VIEW OF ADELAIDE, SOUTH AUSTRALIA.**



**EXHIBITION BUILDING, SOUTH AUSTRALIA.**



*VIEW OF BRISBANE, QUEENSLAND.*





*VIEW OF BRISBANE, QUEENSLAND.*



**VIEW OF PERTH, WESTERN AUSTRALIA.**



**VIEW OF PERTH, WESTERN AUSTRALIA.**



**VIEW OF HOBART, TASMANIA.**



**VIEW OF LAUNCESTON, TASMANIA.**

# Statistics of the Federal States

COMPILED FROM  
THE LATEST AUTHENTIC SOURCES.

STATE.	LAND.		POPULATION	REVENUE.	PUBLIC DEBT.	RAIL- WAYS.	GOLD.	
	AREA.	CULTIVATED					RAISED.	VALUE.
	Sq. miles.	Acres.		£	£	Miles.	Ozs.	£
<b>New South Wales</b>	310,937	2,555,329	1,346,240	9,482,096	63,112,720	2,691	313,582	1,244,330
<b>Victoria</b>	87,884	3,877,922	1,175,463	6,898,240	47,058,088	3,113	837,257	3,349,028
<b>South Australia</b>	903,690	2,967,370	367,800	2,612,730	24,431,590	1,723		
<b>Queensland</b>	668,497		498,523	3,473,716	29,457,134	2,353	615,558	2,462,232
<b>Western Australia</b>	975,920	218,239	166,501	1,151,063	1,367,445 1890.	1,164	686,361	2,608,172
<b>Tasmania</b>	26,215		177,340	758,100	6,432,800		23,451	87,114



---

Printed and Published by  
E. Whitehead & Co.,  
238 Colliins Street, Melbourne,  
Australia.

[*All Rights Reserved.*]

